

August 2024  
Version 43  
Basemap: Geographx 100m

Scale: 1:900,000

# Te Araroa 2024-2025

Wellington  
Maps 78 - 84

# BASEMAP LEGEND: LINZ TOPO 1:50,000

## ROADS AND TRACKS <sup>1</sup>

State highway .....	
Four lanes or more .....	
Two lanes (includes passing lanes) .....	
Narrow road .....	
Vehicle track .....	
Foot track .....	
Closed track (see warning note below) <sup>2</sup> .....	
Poled route, track connector .....	
Road surface	
sealed .....	
metalled .....	
unmetalled .....	
Tunnel, tunnel under road .....	
Bridge; two lane, one lane .....	
Ford .....	
Gate, locked gate, cattlestop .....	
Footbridge, cableway, walkwire <sup>3</sup> .....	

## RAILWAYS

Double or multiple track .....	
Single track .....	
Railway station, yard or siding .....	
Bridge, tunnel .....	
Level crossing .....	
Road over railway .....	
Railway over road .....	
Tramway or bush railway .....	

## MISCELLANEOUS

Residential area .....	
Large buildings .....	
Isolated building .....	
Homestead, stockyard .....	
Glasshouse or greenhouse .....	
Church, cemetery, grave .....	
Training track .....	
Golf course, helipad .....	
Historic Māori pā, redoubt, monument, plaque or signpost .....	
Reservoir covered, reservoir uncovered, tank .....	
Mast, tower, wind machine or wind turbine .....	
Shipwreck, lighthouse, beacon .....	
Fence (selection only) .....	
Pipeline above ground .....	
Pipeline underground .....	
Disused water race .....	
Power line on pylons (actual positions) <sup>3</sup> .....	
Power line on poles (away from roads) <sup>3</sup> .....	
Telephone line (away from roads) <sup>3</sup> .....	
Industrial cableway .....	
Mine; underground, opencast .....	
Buried gas pipeline .....	

### TO GIVE A GRID REFERENCE ON THIS MAP (To nearest 100 metres)

East		North	
1. Locate the first VERTICAL grid line to the LEFT of the point.		4. Locate the first HORIZONTAL grid line BELOW the point.	
2. Read the grid values labelling the line in either the top or bottom margin or across the middle of the map.	49	5. Read the grid values labelling the line in either the left or right margin of the map.	34
3. Estimate tenths of a grid square eastwards from the grid line to the point.	0	6. Estimate tenths of a grid square northwards from the grid line to the point.	0
	490		340

## RELIEF FEATURES <sup>4</sup>

Index contour .....	
Intermediate contours .....	
Perennial snow and ice contours .....	
Supplementary contour .....	
Depression contours .....	
Shallow depression, small depression or shaft .....	
Beaconed trig station (with trig identification code) .....	
Elevation in metres .....	
Cliff, terrace, slip .....	
Rock outcrops .....	
Stopbank, cutting .....	
Embankment or causeway .....	
Saddle, cave .....	
Alpine features	
Moraine .....	
Moraine wall .....	
Scree .....	

## WATER FEATURES

Coastal rocks .....	
Shoal or reef .....	
Sand and mud .....	
Sand .....	
Shingle .....	
Swamp .....	
Boat ramp .....	
Breakwater, wharf, jetty .....	
Slipway .....	
Marine farm, seawall .....	
Dam, floodgate, weir .....	
Waterfall, rapids .....	
Cold spring, hot spring .....	
Fumarole, geothermal bore .....	
Watercourse, drain .....	
Canal; large, small .....	
Stream disappearing into ground .....	

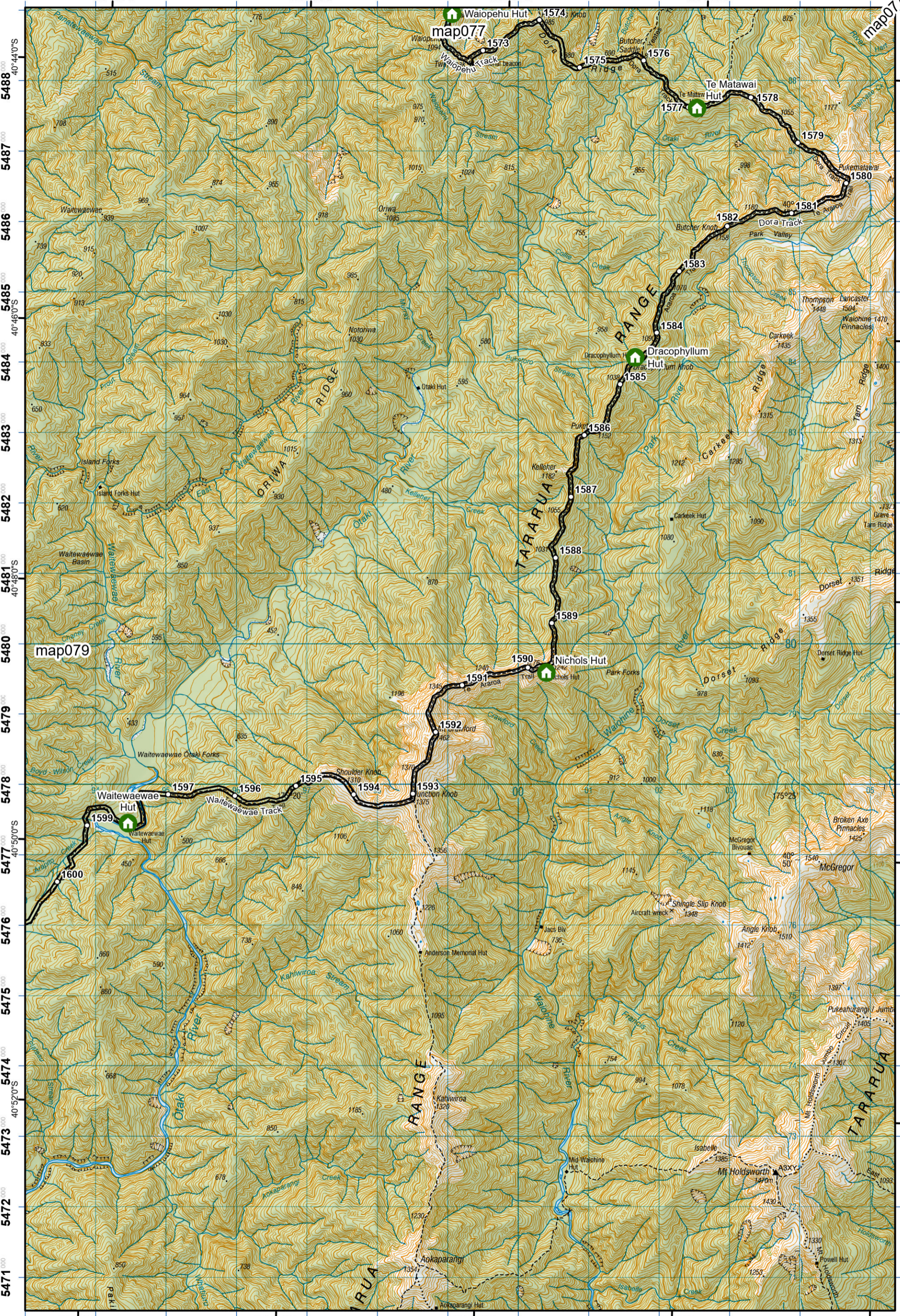
## VEGETATION FEATURES

Native forest .....	
Exotic coniferous forest .....	
Exotic non-coniferous forest .....	
Scrub .....	
Scattered scrub .....	
Shelter belt .....	
Trees .....	
Orchard or vineyard or plantation .....	
Mangroves .....	

### IMPORTANT INFORMATION:

- Representation on this map of a road or track does not necessarily indicate public right of access.
- Closed tracks or routes on this map are defined as being no longer maintained or passable and should not be used by recreationalists. The Department of Conservation or other authorities should be contacted for the latest information on tracks and huts.
- Not all aerial wires, cableways and obstructions that could be hazardous to aircraft are shown on this map.
- Contours and spot elevations in forest and snow areas may be less accurate.

1793 1794 1795 1796 1797 1798 1799 1800 1801 1802 1803 1804 1805

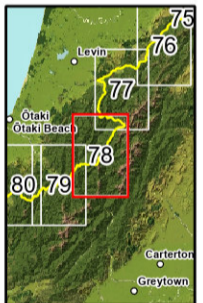


1793 1794 1795 1796 1797 1798 1799 1800 1801 1802 1803 1804 1805

Grid North



Mag. dev (2024) 22.9°



- KEY**
- DOC Huts & Campsites Using Te Araroa Pass
    - Included
    - 20% Discount
    - Not included
    - Private Campsites
    - YHA
    - Bypass Km Marks
    - Km Markers
    - Bypass
  - Main Trail
    - Open
    - Road section
    - Seasonal
    - Water crossing
    - Drinking water



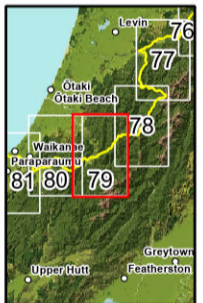
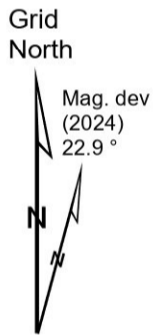
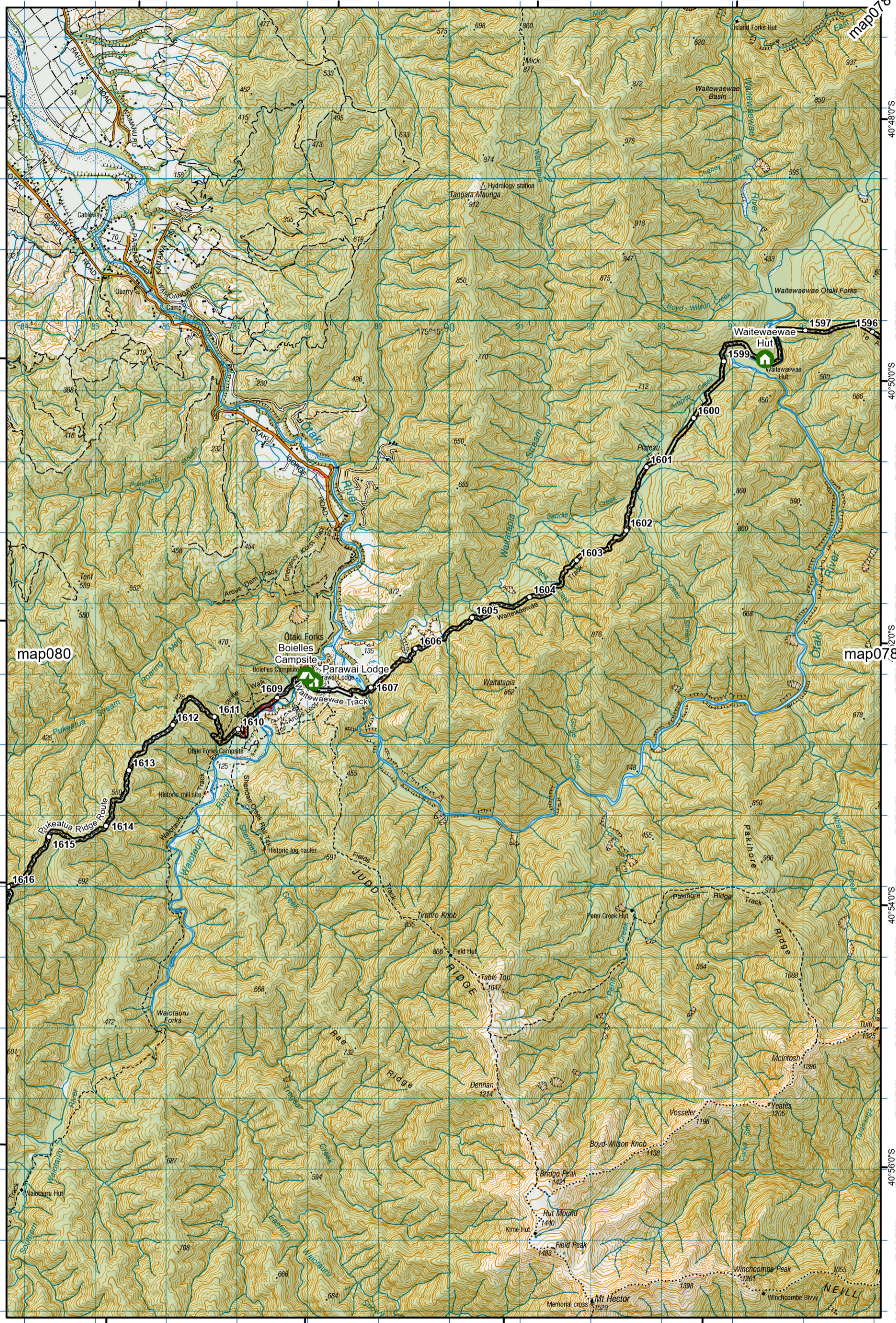
**Te Araroa Trail 2024-2025 (v43)**  
 Last updated: 12/8/2024  
 Data sources: DOC, LINZ, Geographx, Corax.  
 Basemap(s): LINZ Topographic 1:50,000, Geographx 100m.  
 Author(s): Herenga ā Nuku Aotearoa, Te Araroa Trust.  
 For seasonally affected or bypass sections, please check the Te Araroa Website Trail Alerts page before walking.



Tararua Ranges  
 Wellington (Maps 78 - 84)

**78**

1784 1785 1786 1787 1788 1789 1790 1791 1792 1793 1794 1795 1796



- KEY**
- DOC Huts & Campsites Using Te Araroa Pass
    - Included
    - 20% Discount
    - Not included
  - Private Campsites
  - YHA
  - Bypass Km Marks
  - Km Markers
  - Bypass
  - Main Trail
    - Open
    - Road section
    - Seasonal
    - Water crossing
    - Drinking water

1784 1785 1786 1787 1788 1789 1790 1791 1792 1793 1794 1795 1796

**Te Araroa Trail 2024-2025 (v43)**  
 Last updated: 12/8/2024  
 Data sources: DOC, LINZ, Geographx, Corax.  
 Basemap(s): LINZ Topographic 1:50,000, Geographx 100m.  
 Author(s): Herenga ā Nuku Aotearoa, Te Araroa Trust.  
 For seasonally affected or bypass sections, please check the Te Araroa Website Trail Alerts page before walking.

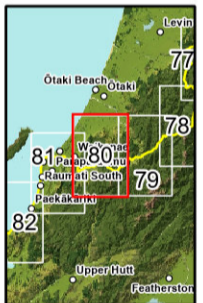
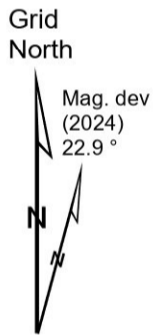
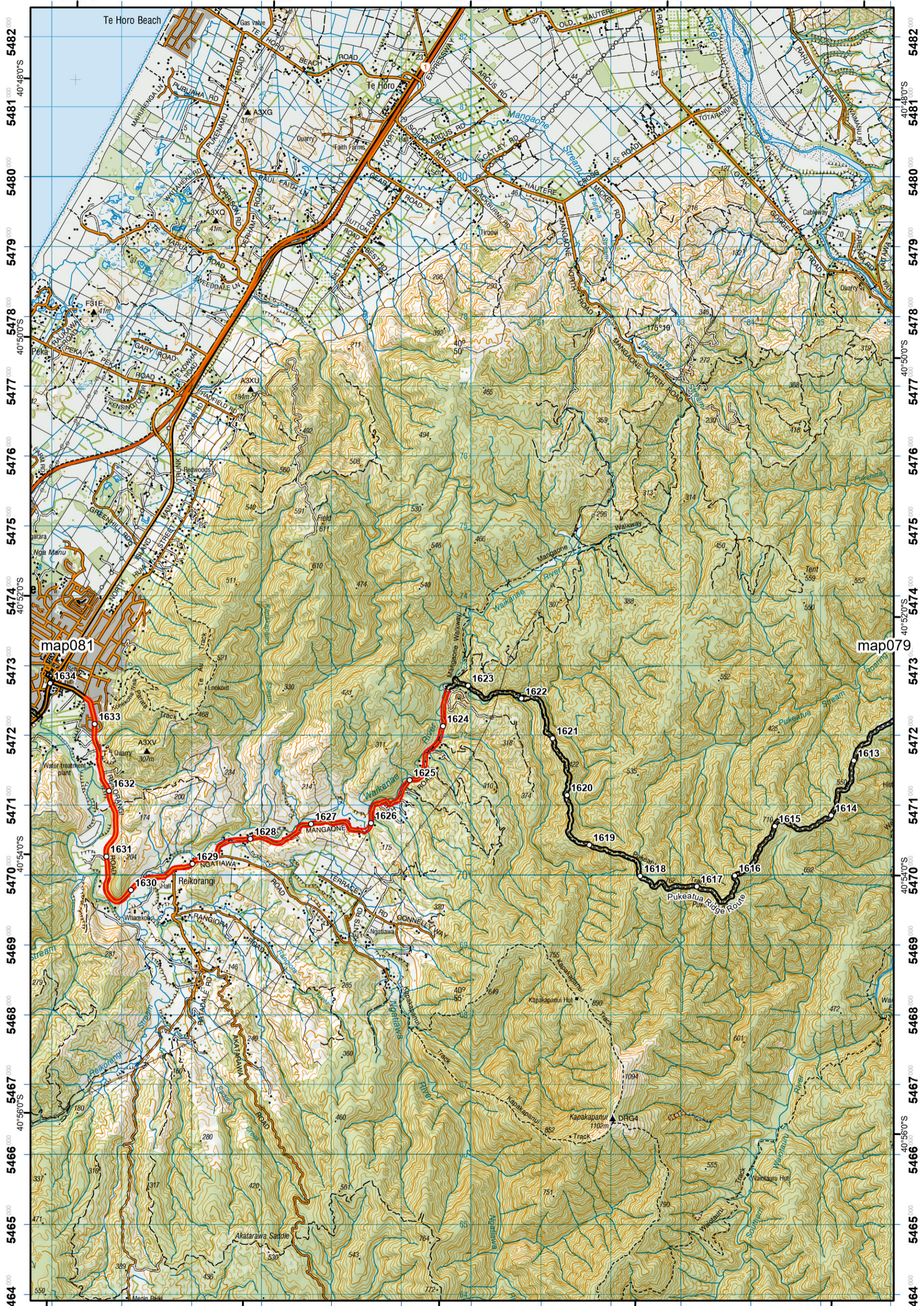


Tararua Ranges  
 - Pukeatua  
 Wellington (Maps 78 - 84)

79



1774<sup>000</sup> 1775<sup>000</sup> 1776<sup>000</sup> 1777<sup>000</sup> 1778<sup>000</sup> 1779<sup>000</sup> 1780<sup>000</sup> 1781<sup>000</sup> 1782<sup>000</sup> 1783<sup>000</sup> 1784<sup>000</sup> 1785<sup>000</sup> 1786<sup>000</sup>  
175°4'0"E 175°6'0"E 175°8'0"E 175°10'0"E 175°12'0"E



- KEY**
- DOC Huts & Campsites Using Te Araroa Pass
    - Included
    - 20% Discount
    - Not included
  - Private Campsites
  - YHA
  - Bypass Km Marks
  - Km Markers
  - Bypass
  - Main Trail
  - Open
  - Road section
  - Seasonal
  - Water crossing
  - Drinking water

**Te Araroa Trail 2024-2025 (v43)**  
Last updated: 12/8/2024  
Data sources: DOC, LINZ, Geographx, Corax.  
Basemap(s): LINZ Topographic 1:50,000, Geographx 100m.  
Author(s): Herenga ā Nuku Aotearoa, Te Araroa Trust.  
For seasonally affected or bypass sections, please check the Te Araroa Website Trail Alerts page before walking.



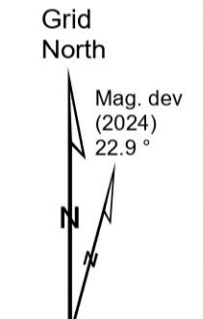
# Te Araroa

Pukeatua  
Wellington (Maps 78 - 84)

# 80



1765 1766 1767 1768 1769 1770 1771 1772 1773 1774 1775 1776



- KEY**
- DOC Huts & Campsites Using Te Araroa Pass
    - Included
    - 20% Discount
    - Not included
  - Private Campsites
  - YHA
  - Bypass Km Marks
  - Km Markers
  - Bypass
  - Main Trail
  - Open
  - Road section
  - Seasonal
  - Water crossing
  - Drinking water



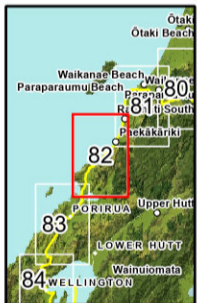
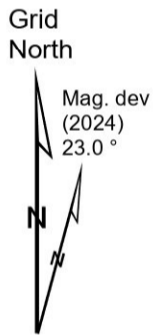
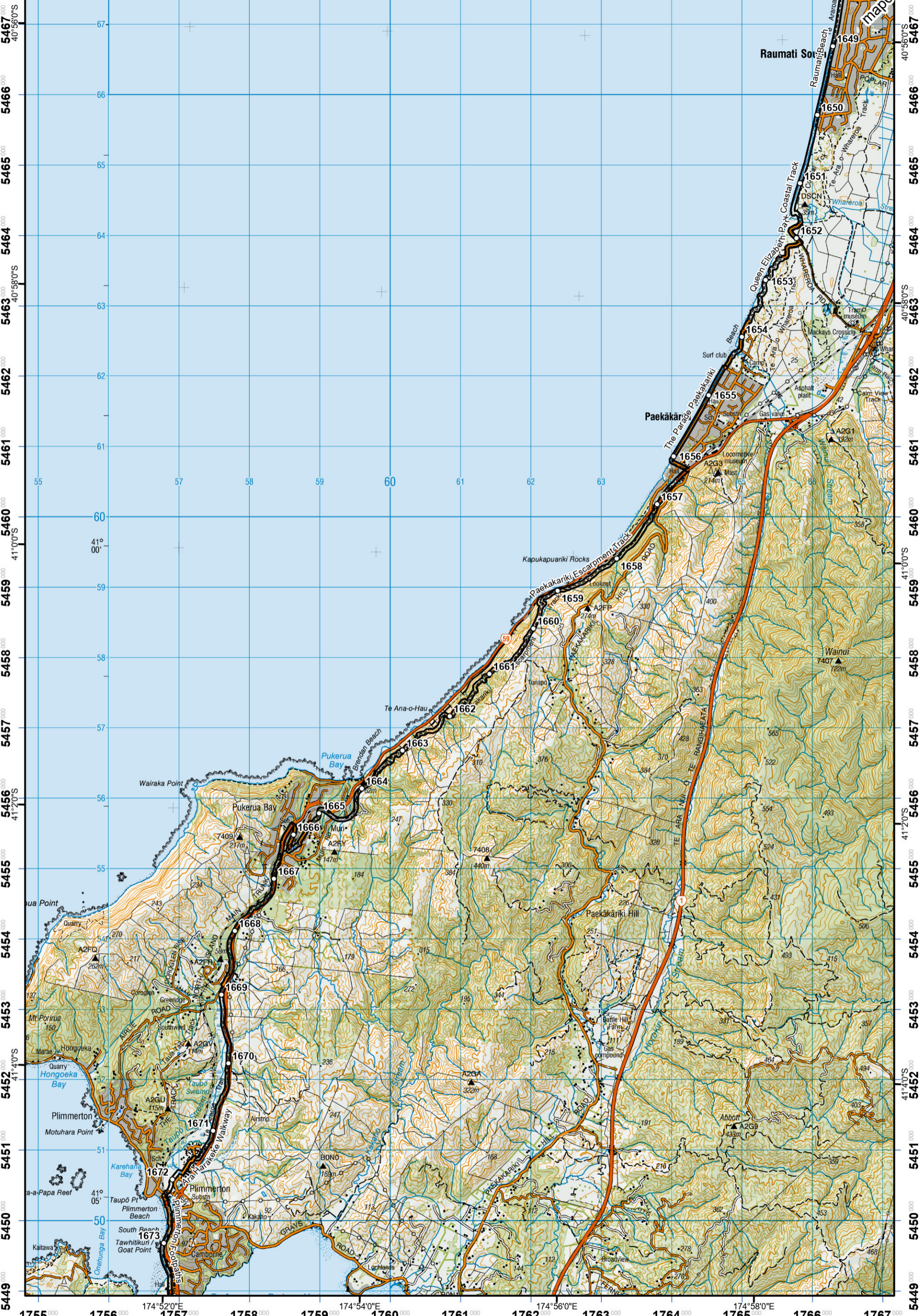
Te Araroa Trail 2024-2025 (v43)  
 Last updated: 12/8/2024  
 Data sources: DOC, LINZ, Geographx, Corax.  
 Basemap(s): LINZ Topographic 1:50,000, Geographx 100m.  
 Author(s): Herenga ā Nuku Aotearoa, Te Araroa Trust.  
 For seasonally affected or bypass sections, please check the Te Araroa Website Trail Alerts page before walking.

# Te Araroa

Pukeatua  
 - Kapiti Coast  
 Wellington (Maps 78 - 84)



1755 000 1756 000 1757 000 1758 000 1759 000 1760 000 1761 000 1762 000 1763 000 1764 000 1765 000 1766 000 1767 000  
174°52'0"E 174°54'0"E 174°56'0"E 174°58'0"E



- KEY**
- DOC Huts & Campsites Using Te Araroa Pass
    - Included
    - 20% Discount
    - Not included
  - Private Campsites
  - YHA
  - Bypass Km Marks
  - Km Markers
  - Bypass
  - Main Trail
  - Open
  - Road section
  - Seasonal
  - Water crossing
  - Drinking water

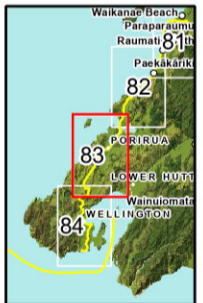
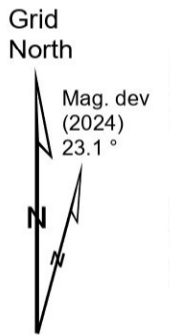
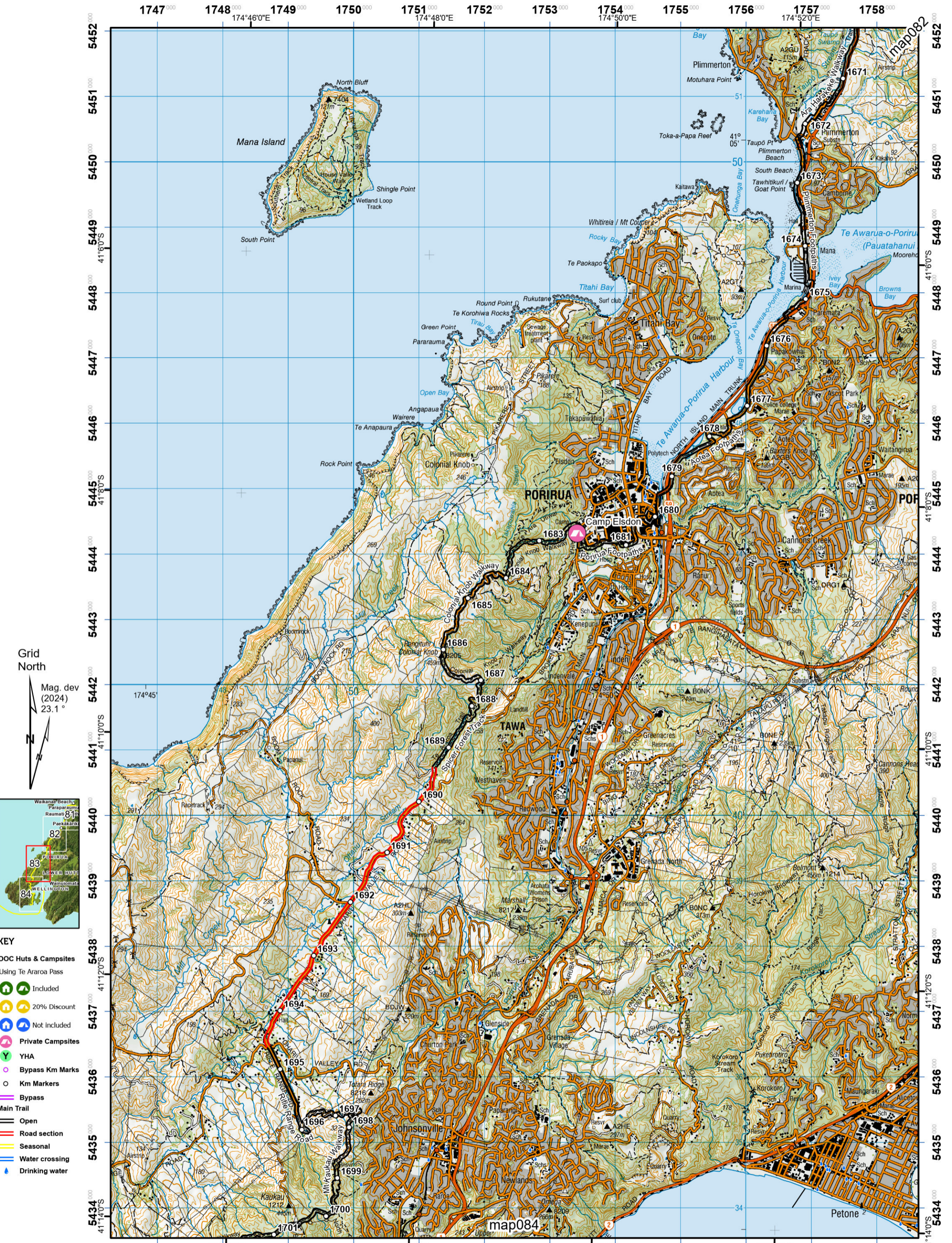


**Te Araroa Trail 2024-2025 (v43)**  
 Last updated: 12/8/2024  
 Data sources: DOC, LINZ, Geographx, Corax.  
 Basemap(s): LINZ Topographic 1:50,000, Geographx 100m.  
 Author(s): Herenga ā Nuku Aotearoa, Te Araroa Trust.  
 For seasonally affected or bypass sections, please check the Te Araroa Website Trail Alerts page before walking.



Kapiti Coast  
 - Paekakariki Escarpment Track  
 Wellington (Maps 78 - 84)

**82**



- KEY**
- DOC Huts & Campsites
  - Using Te Ararua Pass
  - Included
  - 20% Discount
  - Not included
  - Private Campsites
  - YHA
  - Bypass Km Marks
  - Km Markers
  - Bypass
  - Main Trail
  - Open
  - Road section
  - Seasonal
  - Water crossing
  - Drinking water



Te Ararua Trail 2024-2025 (v43)  
 Last updated: 12/8/2024  
 Data sources: DOC, LINZ, Geographx, Corax.  
 Basemap(s): LINZ Topographic 1:50,000, Geographx 100m.  
 Author(s): Herenga ā Nuku Aotearoa, Te Ararua Trust.  
 For seasonally affected or bypass sections, please check the Te Ararua Website Trail Alerts page before walking.

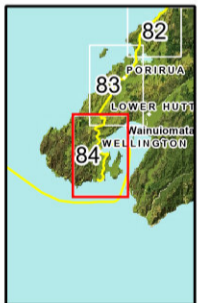
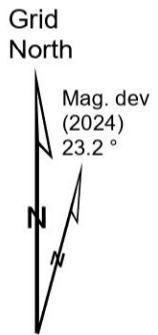
# Te Ararua

Ara Harakeke  
 - Colonial Knob  
 Wellington (Maps 78 - 84)





1743 000 1744 000 1745 000 1746 000 1747 000 1748 000 1749 000 1750 000 1751 000 1752 000 1753 000 1754 000 1755 000



- KEY**
- DOC Huts & Campsites Using Te Araroa Pass
  - Included
  - 20% Discount
  - Not included
  - Private Campsites
  - YHA
  - Bypass Km Marks
  - Km Markers
  - Bypass
  - Main Trail
  - Open
  - Road section
  - Seasonal
  - Water crossing
  - Drinking water

1743 000 1744 000 1745 000 1746 000 1747 000 1748 000 1749 000 1750 000 1751 000 1752 000 1753 000 1754 000 1755 000

**Te Araroa Trail 2024-2025 (v43)**  
 Last updated: 12/8/2024  
 Data sources: DOC, LINZ, Geographx, Corax.  
 Basemap(s): LINZ Topographic 1:50,000, Geographx 100m.  
 Author(s): Herenga ā Nuku Aotearoa, Te Araroa Trust.  
 For seasonally affected or bypass sections, please check the Te Araroa Website Trail Alerts page before walking.



Colonial Knob  
 - Ngaio  
 Wellington (Maps 78 - 84)

