

August 2024
Version 43
Basemap: Geographx 100m

Scale: 1:900,000

Te Araroa 2024-2025

Waikato
Maps 34 - 47

BASEMAP LEGEND: LINZ TOPO 1:50,000

ROADS AND TRACKS ¹

State highway	
Four lanes or more	
Two lanes (includes passing lanes)	
Narrow road	
Vehicle track	
Foot track	
Closed track (see warning note below) ²	
Poled route, track connector	
sealed	
Road surface metalled	
unmetalled	
Tunnel, tunnel under road	
Bridge; two lane, one lane	
Ford	
Gate, locked gate, cattlestop	
Footbridge, cableway, walkwire ³	

RAILWAYS

Double or multiple track	
Single track	
Railway station, yard or siding	
Bridge, tunnel	
Level crossing	
Road over railway	
Railway over road	
Tramway or bush railway	

MISCELLANEOUS

Residential area	
Large buildings	
Isolated building	
Homestead, stockyard	
Glasshouse or greenhouse	
Church, cemetery, grave	
Training track	
Golf course, helipad	
Historic Māori pā, redoubt, monument, plaque or signpost	
Reservoir covered, reservoir uncovered, tank	
Mast, tower, wind machine or wind turbine	
Shipwreck, lighthouse, beacon	
Fence (selection only)	
Pipeline above ground	
Pipeline underground	
Disused water race	
Power line on pylons (actual positions) ³	
Power line on poles (away from roads) ³	
Telephone line (away from roads) ³	
Industrial cableway	
Mine; underground, opencast	
Buried gas pipeline	

TO GIVE A GRID REFERENCE ON THIS MAP (To nearest 100 metres)

East		North	
1. Locate the first VERTICAL grid line to the LEFT of the point.		4. Locate the first HORIZONTAL grid line BELOW the point.	
2. Read the grid values labelling the line in either the top or bottom margin or across the middle of the map.	49	5. Read the grid values labelling the line in either the left or right margin of the map.	34
3. Estimate tenths of a grid square eastwards from the grid line to the point.	0	6. Estimate tenths of a grid square northwards from the grid line to the point.	0
	490		340

RELIEF FEATURES ⁴

Index contour	
Intermediate contours	
Perennial snow and ice contours	
Supplementary contour	
Depression contours	
Shallow depression, small depression or shaft	
Beaconed trig station (with trig identification code)	
Elevation in metres	
Cliff, terrace, slip	
Rock outcrops	
Stopbank, cutting	
Embankment or causeway	
Saddle, cave	
Alpine features	
Moraine	
Moraine wall	
Scree	

WATER FEATURES

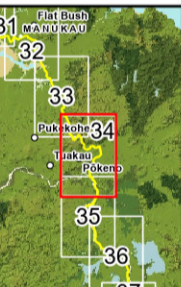
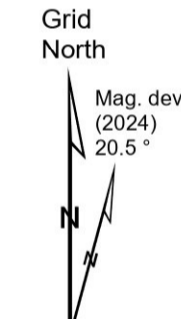
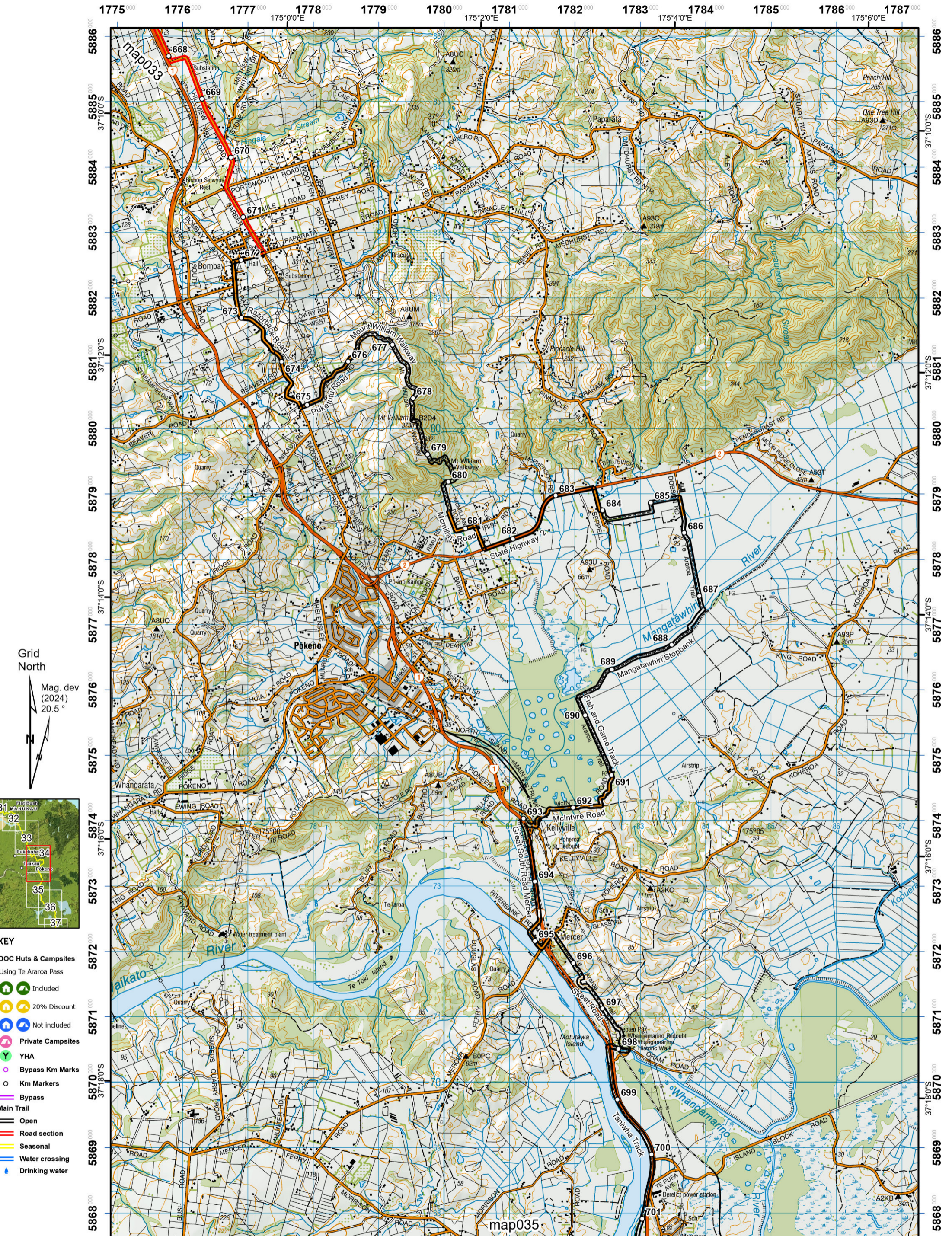
Coastal rocks	
Shoal or reef	
Sand and mud	
Sand	
Shingle	
Swamp	
Boat ramp	
Breakwater, wharf, jetty	
Slipway	
Marine farm, seawall	
Dam, floodgate, weir	
Waterfall, rapids	
Cold spring, hot spring	
Fumarole, geothermal bore	
Watercourse, drain	
Canal; large, small	
Stream disappearing into ground	

VEGETATION FEATURES

Native forest	
Exotic coniferous forest	
Exotic non-coniferous forest	
Scrub	
Scattered scrub	
Shelter belt	
Trees	
Orchard or vineyard or plantation	
Mangroves	

IMPORTANT INFORMATION:

- Representation on this map of a road or track does not necessarily indicate public right of access.
- Closed tracks or routes on this map are defined as being no longer maintained or passable and should not be used by recreationalists. The Department of Conservation or other authorities should be contacted for the latest information on tracks and huts.
- Not all aerial wires, cableways and obstructions that could be hazardous to aircraft are shown on this map.
- Contours and spot elevations in forest and snow areas may be less accurate.



- KEY**
- DOC Huts & Campsites Using Te Araroa Pass
 - Included
 - 20% Discount
 - Not included
 - Private Campsites
 -
 - YHA
 -
 - Bypass Km Marks
 -
 - Km Markers
 -
 - Bypass
 -
 - Main Trail
 - Open
 - Road section
 - Seasonal
 - Water crossing
 - Drinking water



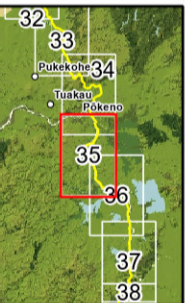
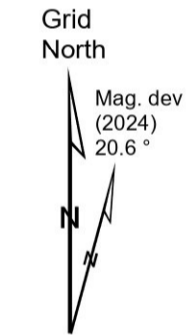
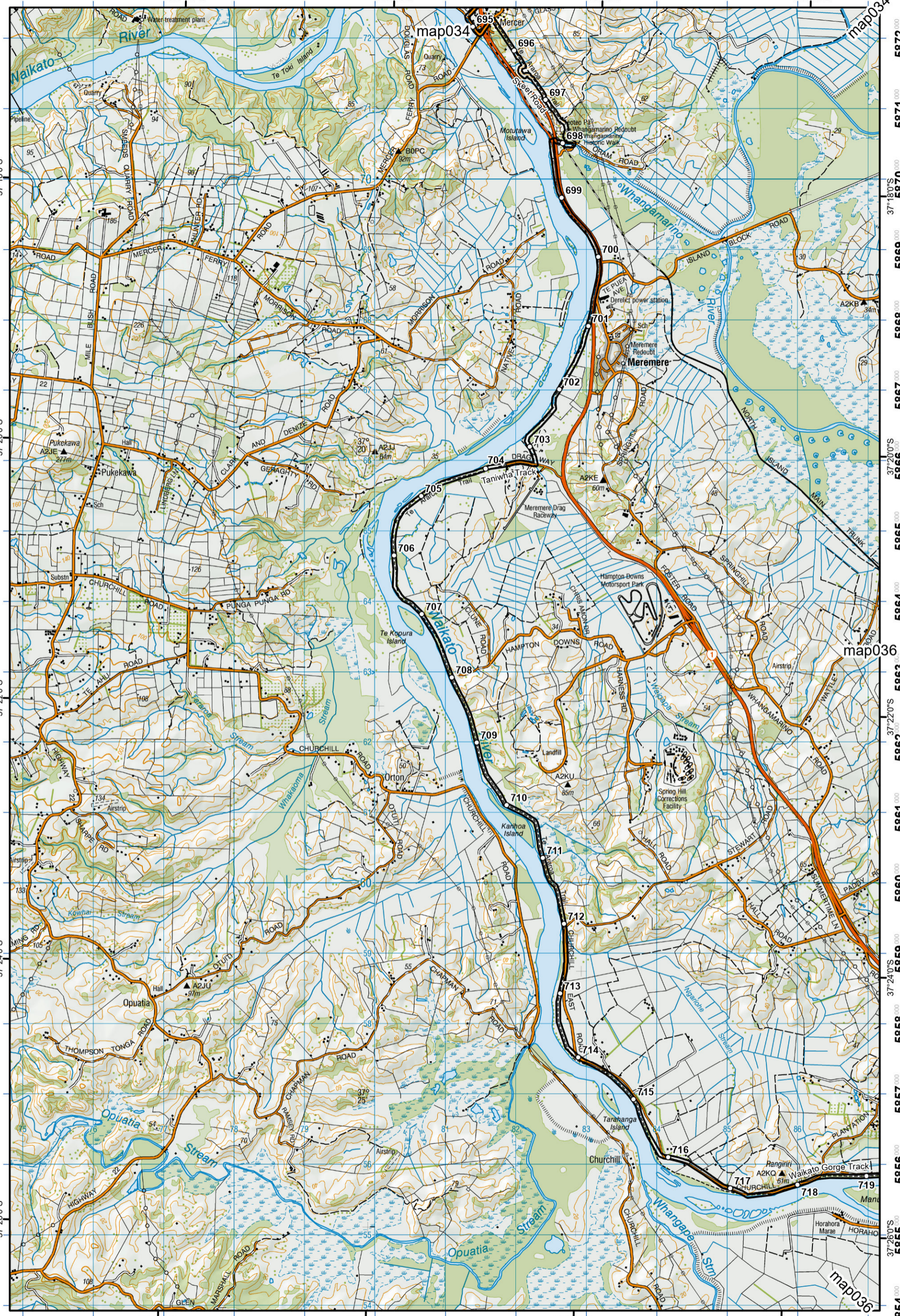
Te Araroa Trail 2024-2025 (v43)
 Last updated: 12/8/2024
 Data sources: DOC, LINZ, Geographx, Corax.
 Basemap(s): LINZ Topographic 1:50,000, Geographx 100m.
 Author(s): Herenga ā Nuku Aotearoa, Te Araroa Trust.
 For seasonally affected or bypass sections, please check the Te Araroa Website Trail Alerts page before walking.

0 0.5 1 2 Km
 1:50,000 at A3

Te Araroa

Totara Park to Mangatāwhiri
 - Mangatāwhiri to Mercer
 Waikato (Maps 34 - 47)

1775 000 1776 000 1777 000 1778 000 1779 000 1780 000 1781 000 1782 000 1783 000 1784 000 1785 000 1786 000 1787 000
175°0'0"E 175°20'E 175°40'E 175°60'E



- KEY**
- DOC Huts & Campsites Using Te Araroa Pass
 - Included
 - 20% Discount
 - Not included
 - Private Campsites
 - YHA
 - Bypass Km Marks
 - Km Markers
 - Bypass
 - Main Trail
 - Open
 - Road section
 - Seasonal
 - Water crossing
 - Drinking water



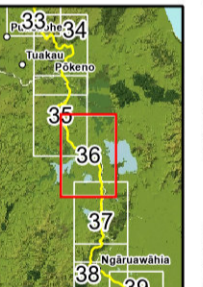
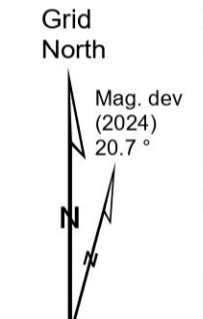
1775 000 1776 000 1777 000 1778 000 1779 000 1780 000 1781 000 1782 000 1783 000 1784 000 1785 000 1786 000 1787 000
37°18'0"S 37°20'0"S 37°22'0"S 37°24'0"S 37°26'0"S 37°28'0"S 37°30'0"S 37°32'0"S 37°34'0"S 37°36'0"S 37°38'0"S 37°40'0"S 37°42'0"S

Te Araroa

Mangatāwhiri to Mercer
- Mercer to Rangiriri
Waikato (Maps 34 - 47)

Te Araroa Trail 2024-2025 (v43)
Last updated: 12/8/2024
Data sources: DOC, LINZ, Geographx, Corax.
Basemap(s): LINZ Topographic 1:50,000, Geographx 100m.
Author(s): Herenga ā Nuku Aotearoa, Te Araroa Trust.
For seasonally affected or bypass sections, please check the Te Araroa Website Trail Alerts page before walking.





- KEY**
- DOC Huts & Campsites Using Te Araroa Pass
 - Included
 - 20% Discount
 - Not included
 - Private Campsites
 - YHA
 - Bypass Km Marks
 - Km Markers
 - Bypass
 - Main Trail
 - Open
 - Road section
 - Seasonal
 - Water crossing
 - Drinking water



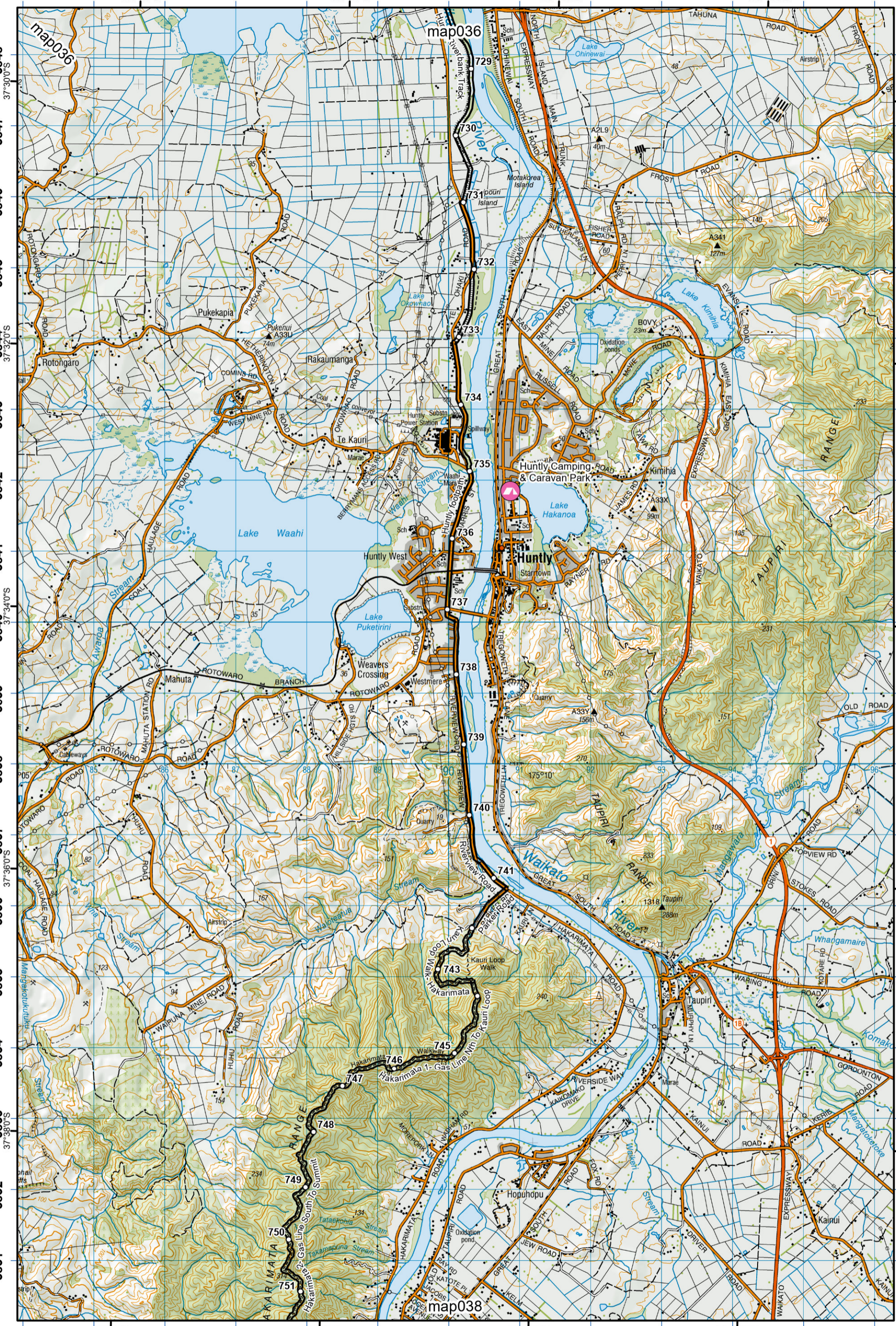
Te Araroa Trail 2024-2025 (v43)
 Last updated: 12/8/2024
 Data sources: DOC, LINZ, Geographx, Corax.
 Basemap(s): LINZ Topographic 1:50,000, Geographx 100m.
 Author(s): Herenga ā Nuku Aotearoa, Te Araroa Trust.
 For seasonally affected or bypass sections, please check the Te Araroa Website Trail Alerts page before walking.



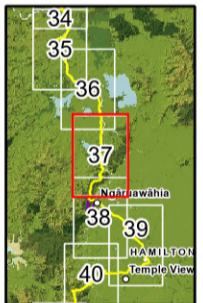
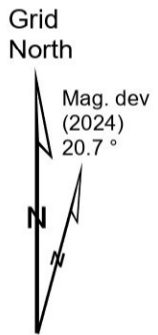
Te Araroa

Mercer to Rangiriri
 - Rangiriri to Huntly
 Waikato (Maps 34 - 47)

1784 1785 1786 1787 1788 1789 1790 1791 1792 1793 1794 1795 1796



1784 1785 1786 1787 1788 1789 1790 1791 1792 1793 1794 1795 1796



- KEY**
- DOC Huts & Campsites Using Te Araroa Pass
 - Included
 - 20% Discount
 - Not included
 - Private Campsites
 - YHA
 - Bypass Km Marks
 - Km Markers
 - Bypass
 - Main Trail
 - Open
 - Road section
 - Seasonal
 - Water crossing
 - Drinking water



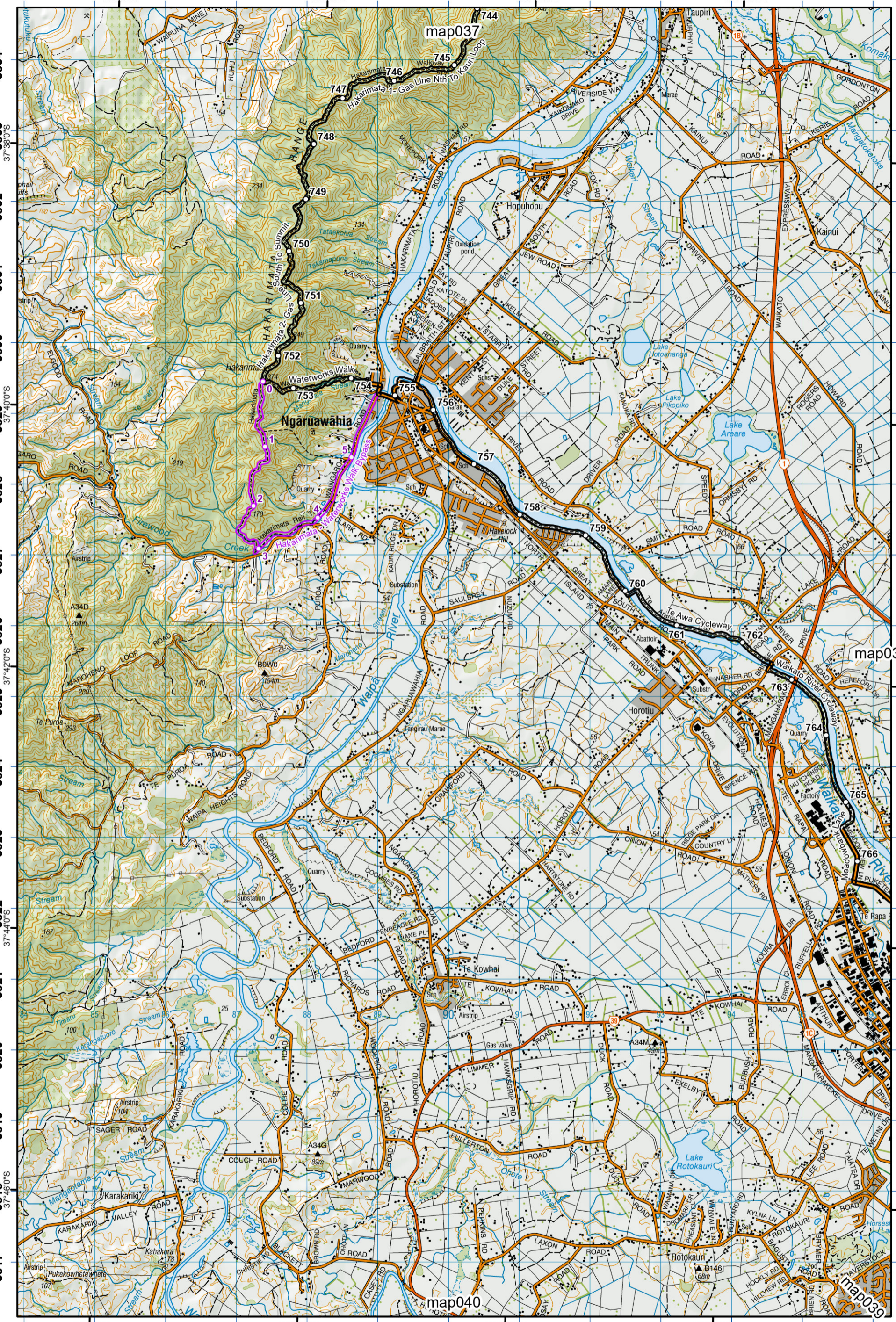
Te Araroa Trail 2024-2025 (v43)
 Last updated: 12/8/2024
 Data sources: DOC, LINZ, Geographx, Corax.
 Basemap(s): LINZ Topographic 1:50,000, Geographx 100m.
 Author(s): Herenga ā Nuku Aotearoa, Te Araroa Trust.
 For seasonally affected or bypass sections, please check the Te Araroa Website Trail Alerts page before walking.



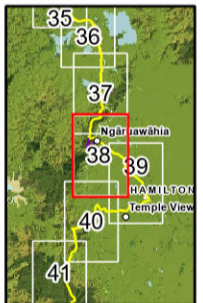
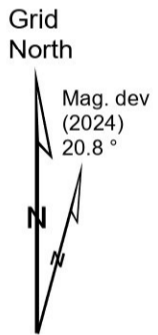
Rangiriri to Huntly
 - Hakarimata Walkway
 Waikato (Maps 34 - 47)

37

1784 1785 1786 1787 1788 1789 1790 1791 1792 1793 1794 1795 1796



1784 1785 1786 1787 1788 1789 1790 1791 1792 1793 1794 1795 1796



- KEY**
- DOC Huts & Campsites Using Te Araroa Pass
 - Included
 - 20% Discount
 - Not included
 - Private Campsites
 - YHA
 - Bypass Km Marks
 - Km Markers
 - Bypass
 - Main Trail
 - Open
 - Road section
 - Seasonal
 - Water crossing
 - Drinking water

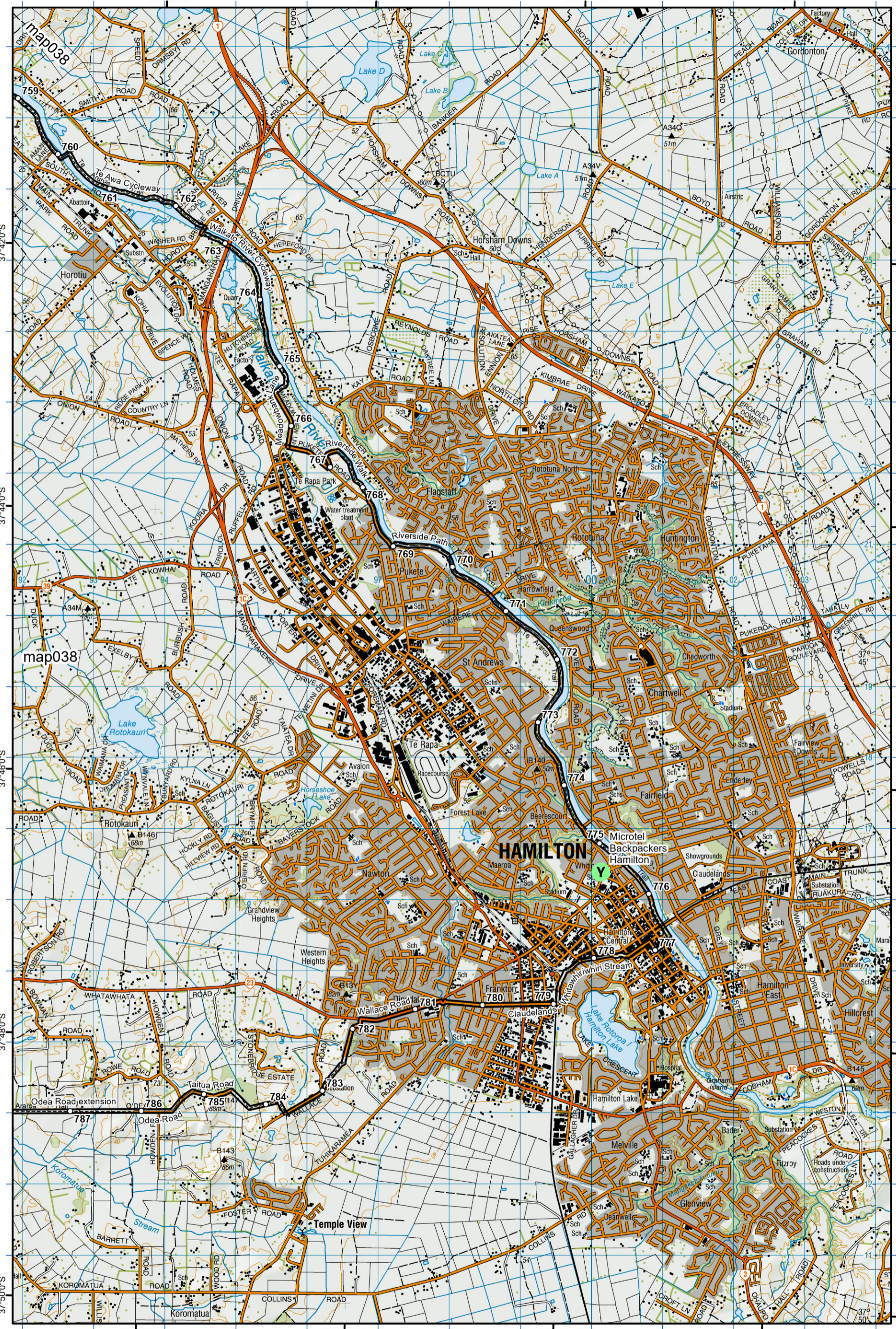


Te Araroa Trail 2024-2025 (v43)
 Last updated: 12/8/2024
 Data sources: DOC, LINZ, Geographx, Corax.
 Basemap(s): LINZ Topographic 1:50,000, Geographx 100m.
 Author(s): Herenga ā Nuku Aotearoa, Te Araroa Trust.
 For seasonally affected or bypass sections, please check the Te Araroa Website Trail Alerts page before walking.

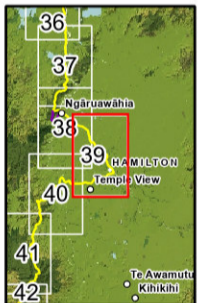
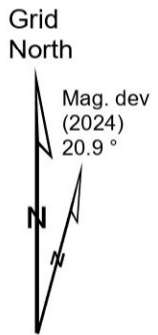


Hakarimata Walkway
 - Ngaruawahia to Hamilton
 Waikato (Maps 34 - 47)

1792 1793 1794 1795 1796 1797 1798 1799 1800 1801 1802 1803 1804



1792 1793 1794 1795 1796 1797 1798 1799 1800 1801 1802 1803 1804



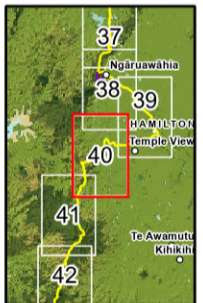
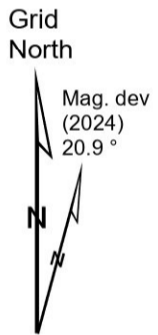
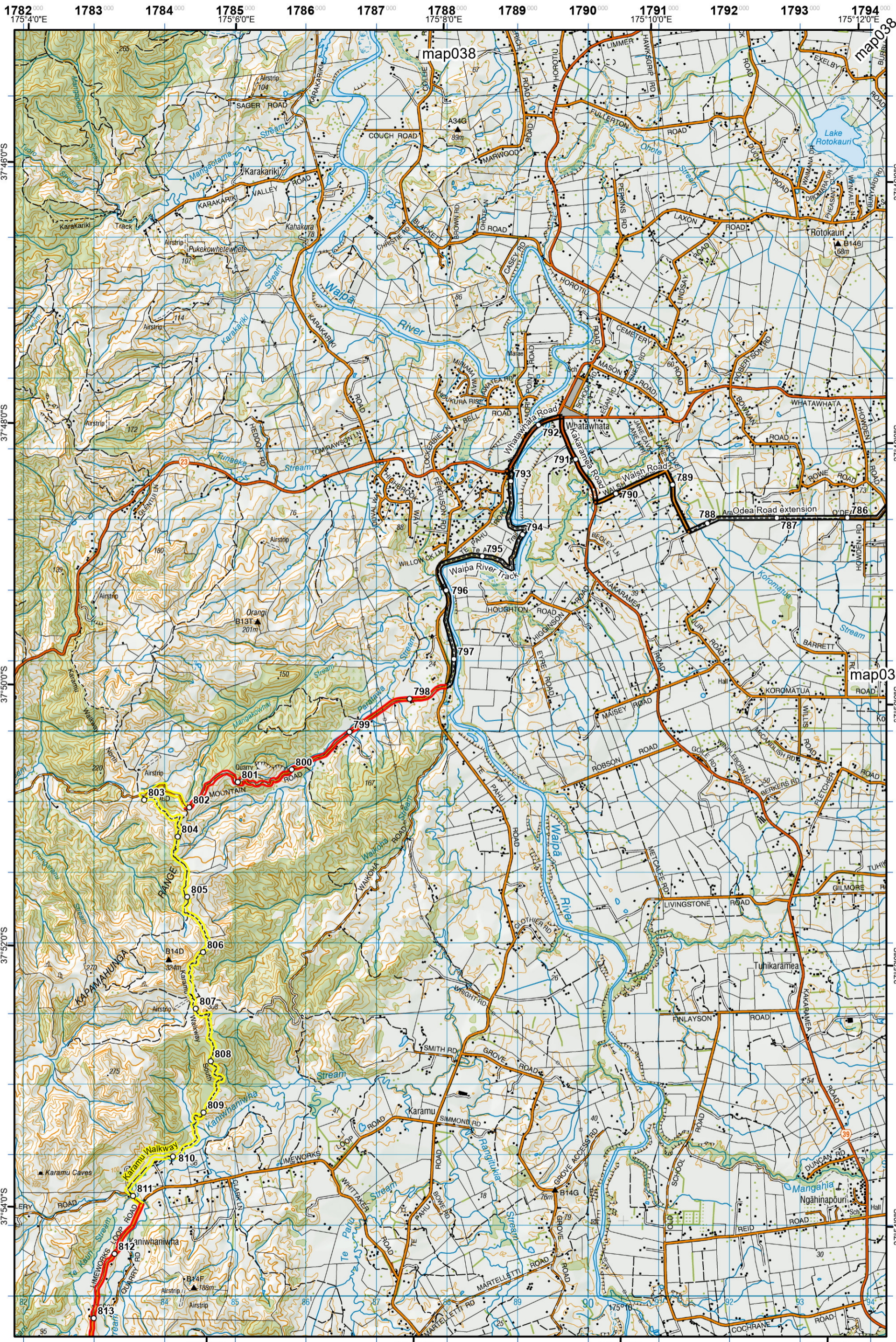
- KEY**
- DOC Huts & Campsites Using Te Araroa Pass
 - Included
 - 20% Discount
 - Not included
 - Private Campsites
 - YHA
 - Bypass Km Marks
 - Km Markers
 - Bypass
 - Main Trail
 - Open
 - Road section
 - Seasonal
 - Water crossing
 - Drinking water

Te Araroa Trail 2024-2025 (v43)
 Last updated: 12/8/2024
 Data sources: DOC, LINZ, Geographx, Corax.
 Basemap(s): LINZ Topographic 1:50,000, Geographx 100m.
 Author(s): Herenga ā Nuku Aotearoa, Te Araroa Trust.
 For seasonally affected or bypass sections, please check the Te Araroa Website Trail Alerts page before walking.

Te Araroa

Ngaruawahia to Hamilton
- Hamilton City
Waikato (Maps 34 - 47)





- KEY**
- DOC Huts & Campsites Using Te Araroa Pass
 - Included
 - 20% Discount
 - Not included
 - Private Campsites
 - YHA
 - Bypass Km Marks
 - Km Markers
 - Bypass
 - Main Trail
 - Open
 - Road section
 - Seasonal
 - Water crossing
 - Drinking water

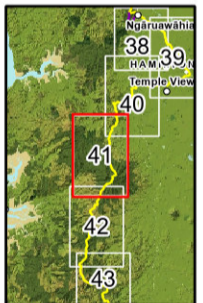
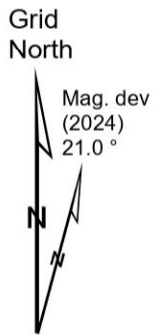
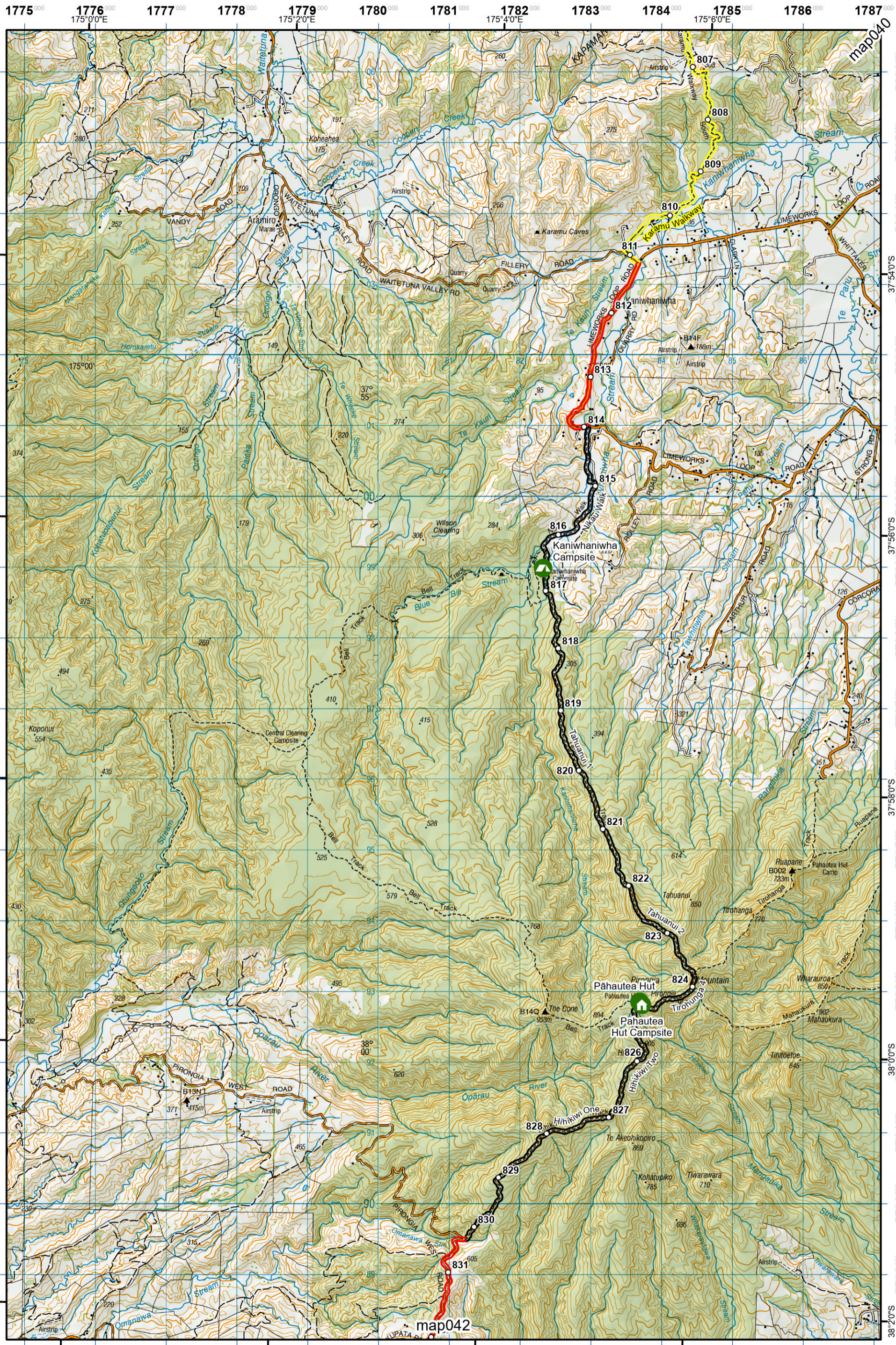


Te Araroa Trail 2024-2025 (v43)
 Last updated: 12/8/2024
 Data sources: DOC, LINZ, Geographx, Corax.
 Basemap(s): LINZ Topographic 1:50,000, Geographx 100m.
 Author(s): Herenga ā Nuku Aotearoa, Te Araroa Trust.
 For seasonally affected or bypass sections, please check the Te Araroa Website Trail Alerts page before walking.

Te Araroa

Waikato (Maps 34 - 47)





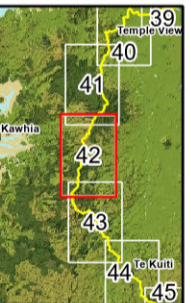
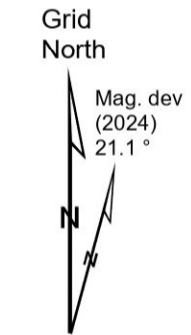
- KEY**
- DOC Huts & Campsites
 - Using Te Araroa Pass
 - Included
 - 20% Discount
 - Not included
 - Private Campsites
 - YHA
 - Bypass Km Marks
 - Km Markers
 - Bypass
 - Main Trail
 - Open
 - Road section
 - Seasonal
 - Water crossing
 - Drinking water

Te Araroa Trail 2024-2025 (v43)
 Last updated: 12/8/2024
 Data sources: DOC, LINZ, Geographx, Corax.
 Basemap(s): LINZ Topographic 1:50,000, Geographx 100m.
 Author(s): Herenga ā Nuku Aotearoa, Te Araroa Trust.
For seasonally affected or bypass sections, please check the Te Araroa Website Trail Alerts page before walking.

Te Araroa

Waipa Walk
 - Pironhia Traverse
 Waikato (Maps 34 - 47)





- KEY**
- DOC Huts & Campsites Using Te Araroa Pass**
 - Included
 - 20% Discount
 - Not included
 - Private Campsites
 - YHA
 - Bypass Km Marks
 - Km Markers
 - Bypass
 - Main Trail**
 - Open
 - Road section
 - Seasonal
 - Water crossing
 - Drinking water

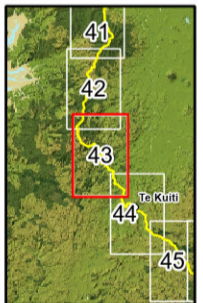
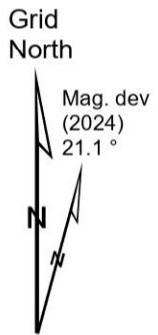
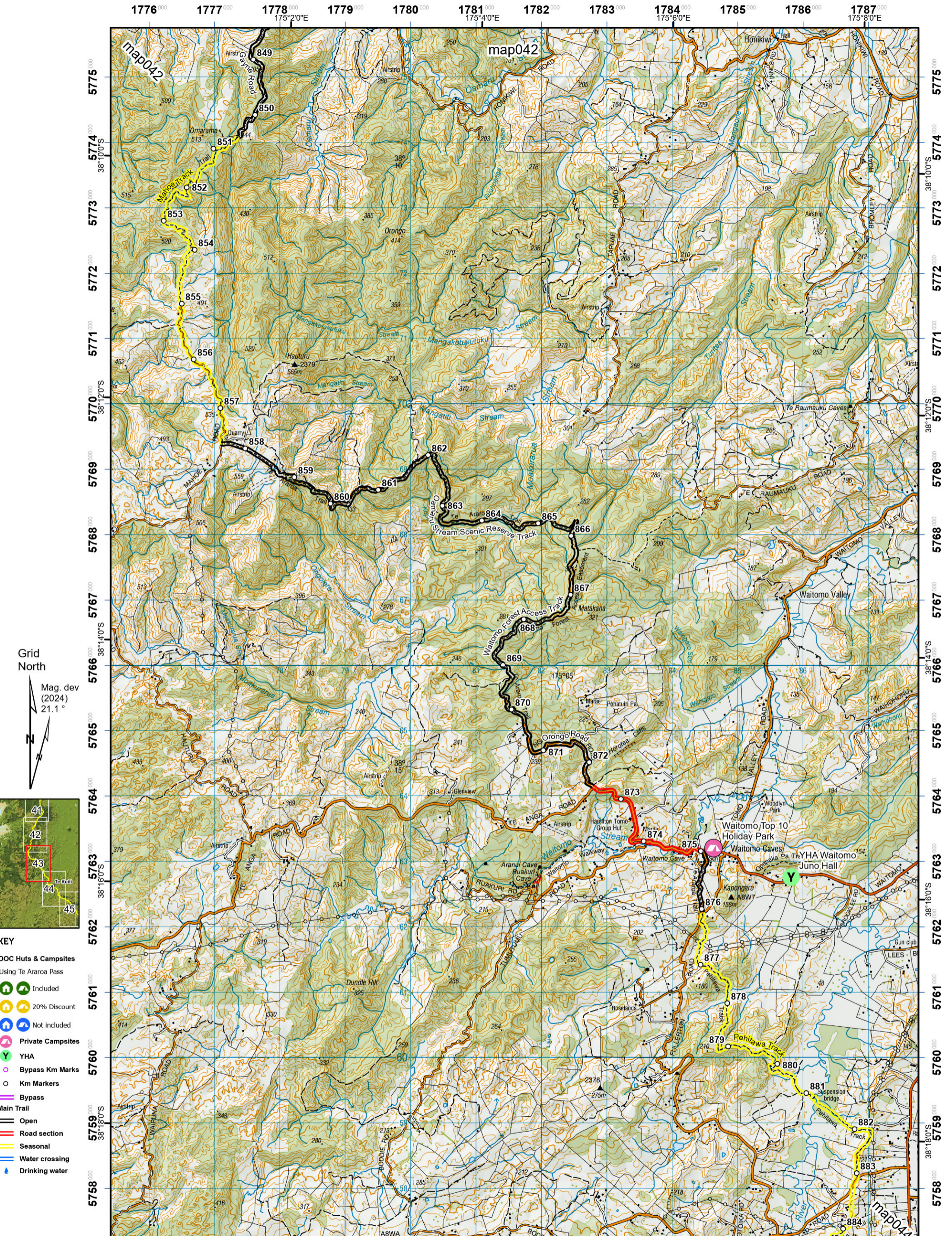


Te Araroa Trail 2024-2025 (v43)
 Last updated: 12/8/2024
 Data sources: DOC, LINZ, Geographx, Corax.
 Basemap(s): LINZ Topographic 1:50,000, Geographx 100m.
 Author(s): Herenga ā Nuku Aotearoa, Te Araroa Trust.
For seasonally affected or bypass sections, please check the Te Araroa Website Trail Alerts page before walking.

Te Araroa

Pirongia Traverse
 - Pirongia to Waitomo
 Waikato (Maps 34 - 47)





- KEY**
- DOC Huts & Campsites Using Te Araroa Pass
 - Included
 - 20% Discount
 - Not included
 - Private Campsites
 - YHA
 - Bypass Km Marks
 - Km Markers
 - Bypass
 - Main Trail
 - Open
 - Road section
 - Seasonal
 - Water crossing
 - Drinking water

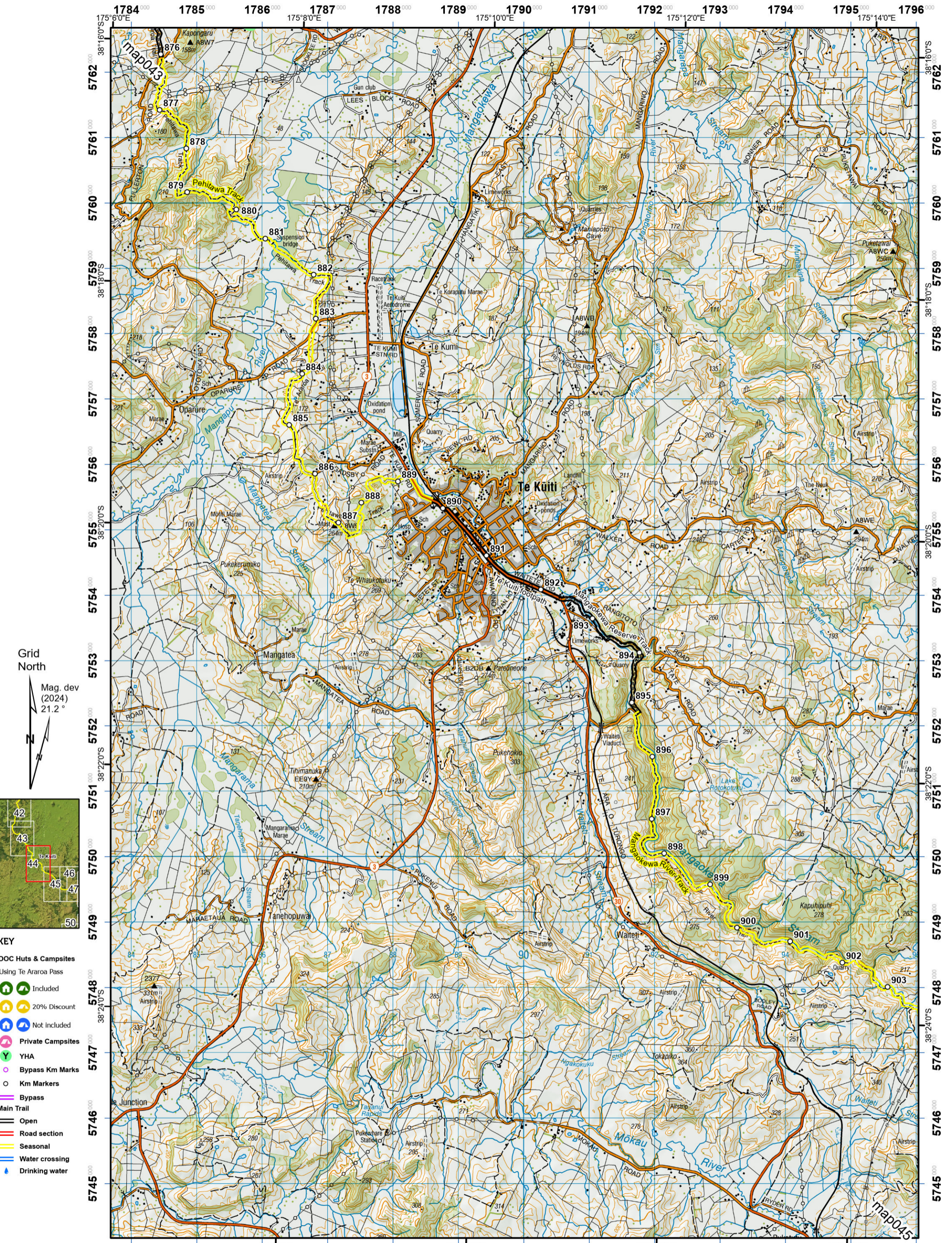


Te Araroa Trail 2024-2025 (v43)
 Last updated: 12/8/2024
 Data sources: DOC, LINZ, Geographx, Corax.
 Basemap(s): LINZ Topographic 1:50,000, Geographx 100m.
 Author(s): Herenga ā Nuku Aotearoa, Te Araroa Trust.
 For seasonally affected or bypass sections, please check the Te Araroa Website Trail Alerts page before walking.

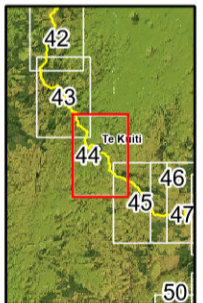
Te Araroa



Pirongia to Waitomo
- Pehitawa Track
Waikato (Maps 34 - 47)



Grid North
Mag. dev (2024)
21.2°



- KEY**
- DOC Huts & Campsites Using Te Araroa Pass
 - Included
 - 20% Discount
 - Not included
 - Private Campsites
 - YHA
 - Bypass Km Marks
 - Km Markers
 - Bypass
 - Main Trail
 - Open
 - Road section
 - Seasonal
 - Water crossing
 - Drinking water

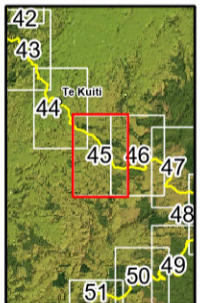
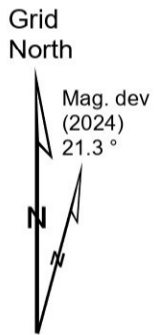
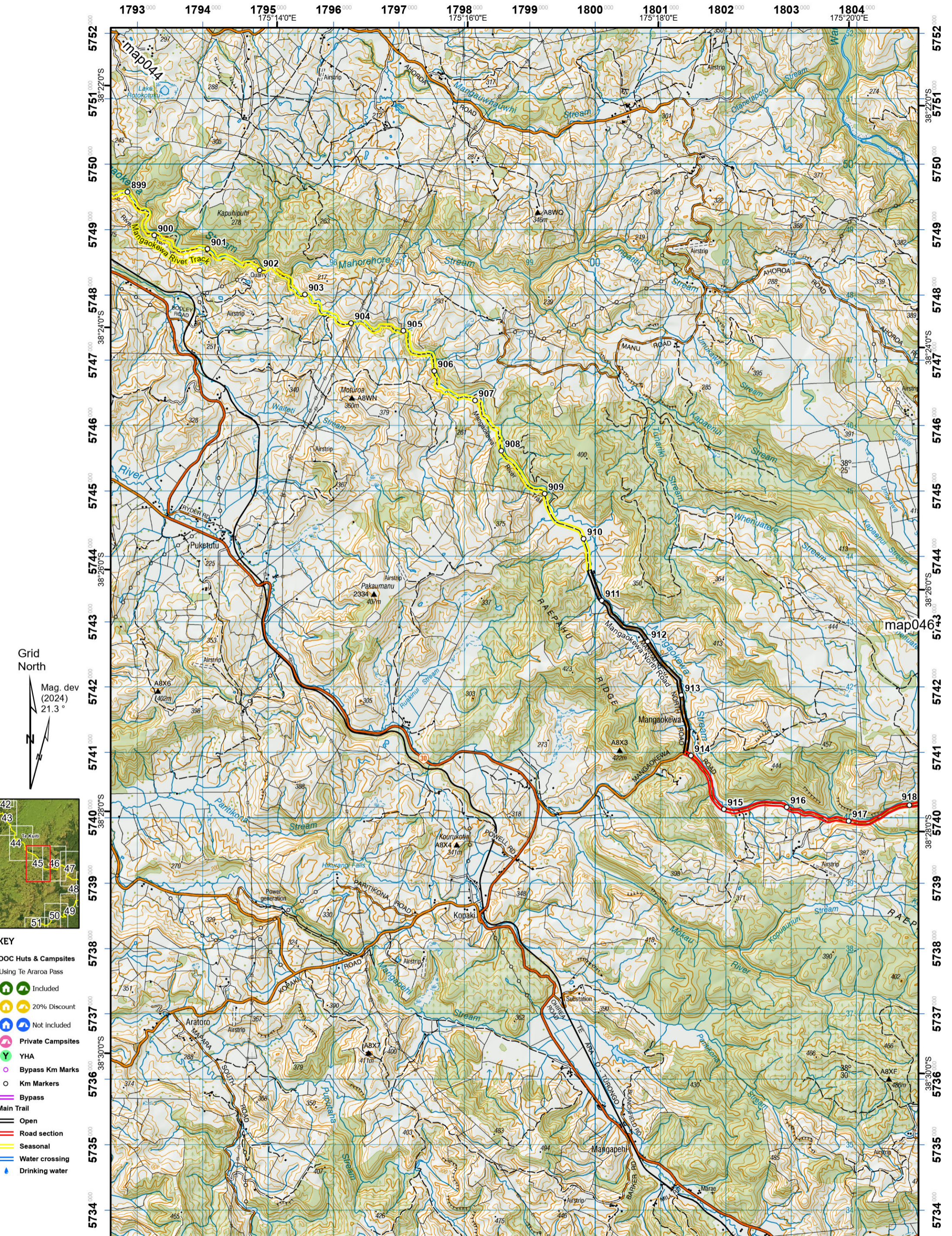


Te Araroa Trail 2024-2025 (v43)
Last updated: 12/8/2024
Data sources: DOC, LINZ, Geographx, Corax.
Basemap(s): LINZ Topographic 1:50,000, Geographx 100m.
Author(s): Herenga ā Nuku Aotearoa, Te Araroa Trust.
For seasonally affected or bypass sections, please check the Te Araroa Website Trail Alerts page before walking.

Te Araroa

0 0.5 1 2 Km
1:50,000 at A3

Pehitawa Track
- Te Kuiti to Pureora
Waikato (Maps 34 - 47)



- KEY**
- DOC Huts & Campsites Using Te Araroa Pass
 - Included
 - 20% Discount
 - Not included
 - Private Campsites
 - YHA
 - Bypass Km Marks
 - Km Markers
 - Bypass
 - Main Trail
 - Open
 - Road section
 - Seasonal
 - Water crossing
 - Drinking water

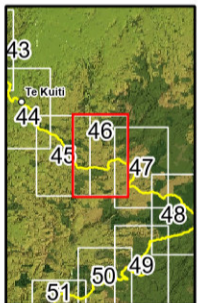
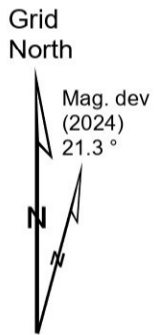
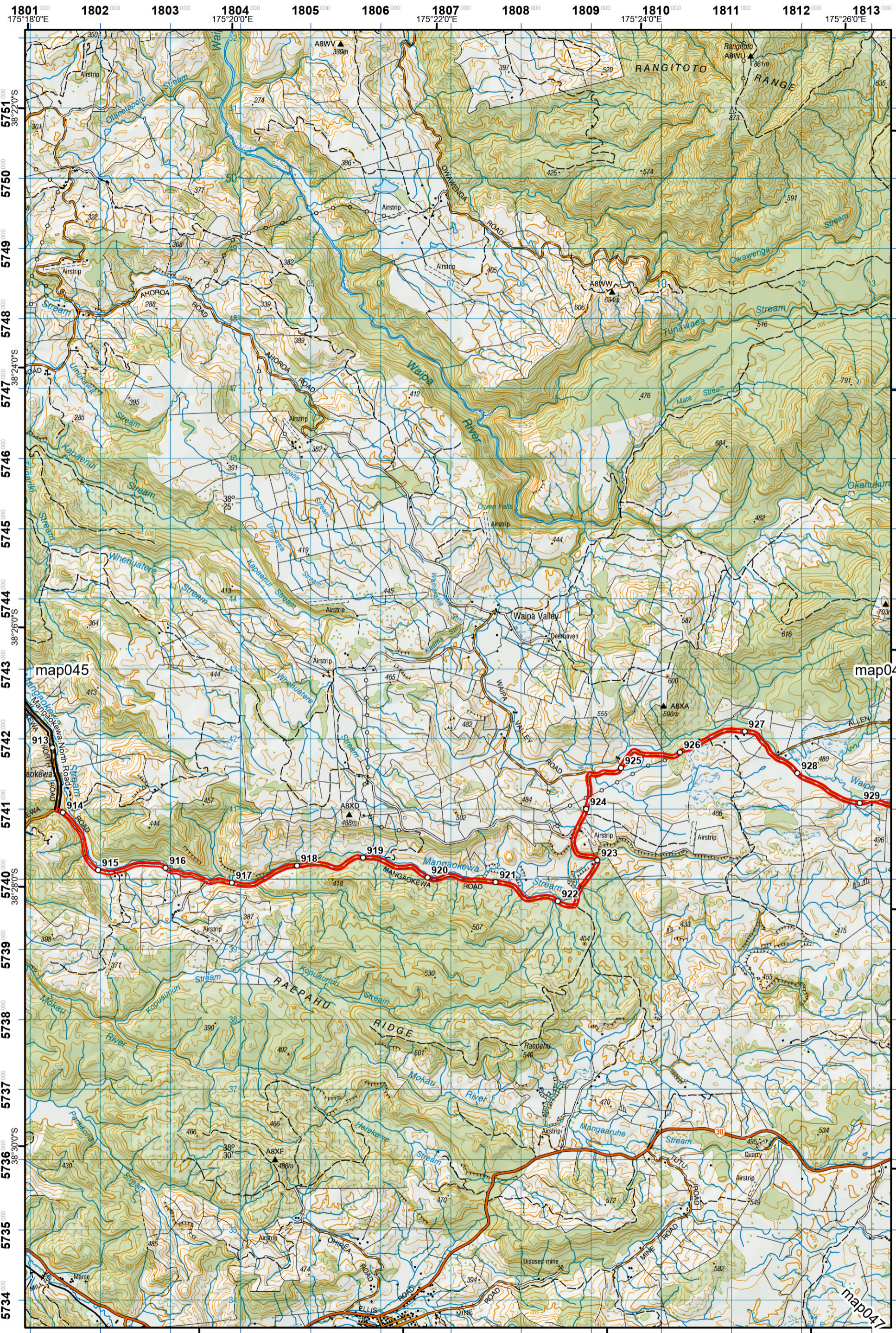


Te Araroa Trail 2024-2025 (v43)
 Last updated: 12/8/2024
 Data sources: DOC, LINZ, Geographx, Corax.
 Basemap(s): LINZ Topographic 1:50,000, Geographx 100m.
 Author(s): Herenga ā Nuku Aotearoa, Te Araroa Trust.
 For seasonally affected or bypass sections, please check the Te Araroa Website Trail Alerts page before walking.

Te Araroa



Te Kuiti to Pureora
 Waikato (Maps 34 - 47)



- KEY**
- DOC Huts & Campsites Using Te Araroa Pass
 - Included
 - 20% Discount
 - Not included
 - Private Campsites
 - Y YHA
 - Bypass Km Marks
 - Km Markers
 - Bypass
 - Main Trail
 - Open
 - Road section
 - Seasonal
 - Water crossing
 - Drinking water

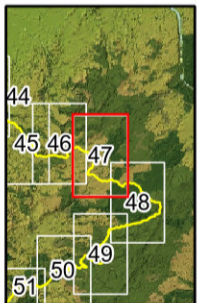
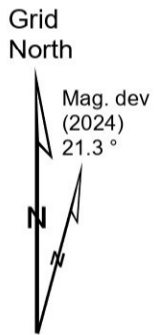
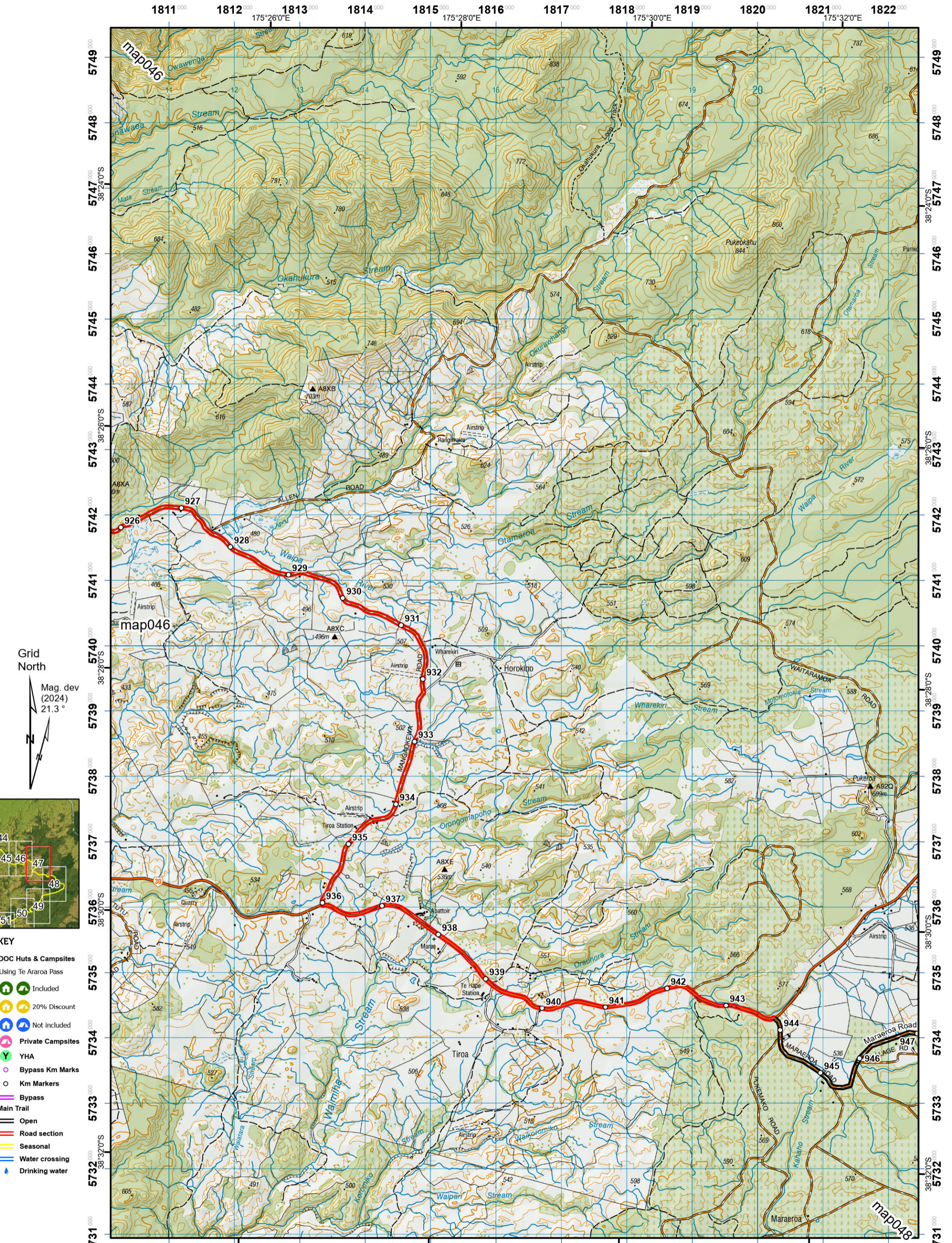


Te Araroa Trail 2024-2025 (v43)
 Last updated: 12/8/2024
 Data sources: DOC, LINZ, Geographx, Corax.
 Basemap(s): LINZ Topographic 1:50,000, Geographx 100m.
 Author(s): Herenga ā Nuku Aotearoa, Te Araroa Trust.
 For seasonally affected or bypass sections, please check the Te Araroa Website Trail Alerts page before walking.



Te Araroa

Te Kuiti to Pureora
 Waikato (Maps 34 - 47)



- KEY**
- DOC Huts & Campsites Using Te Araroa Pass
 - Included
 - 20% Discount
 - Not included
 - Private Campsites
 - YHA
 - Bypass Km Marks
 - Km Markers
 - Bypass
 - Main Trail
 - Open
 - Road section
 - Seasonal
 - Water crossing
 - Drinking water



Te Araroa Trail 2024-2025 (v43)
 Last updated: 12/8/2024
 Data sources: DOC, LINZ, Geographx, Corax.
 Basemap(s): LINZ Topographic 1:50,000, Geographx 100m.
 Author(s): Herenga ā Nuku Aotearoa, Te Araroa Trust.
 For seasonally affected or bypass sections, please check the Te Araroa Website Trail Alerts page before walking.



Te Araroa

Te Kuiti to Pureora
 Waikato (Maps 34 - 47)