



August 2024
Version 43
Basemap: Geographx 100m

Scale: 1:900,000

Te Araroa 2024-2025

Southland
Maps 146 - 160

BASEMAP LEGEND: LINZ TOPO 1:50,000

ROADS AND TRACKS ¹

State highway	
Four lanes or more	
Two lanes (includes passing lanes)	
Narrow road	
Vehicle track	
Foot track	
Closed track (see warning note below) ²	
Poled route, track connector	
sealed	
Road surface metalled	
unmetalled	
Tunnel, tunnel under road	
Bridge; two lane, one lane	
Ford	
Gate, locked gate, cattlestop	
Footbridge, cableway, walkwire ³	

RAILWAYS

Double or multiple track	
Single track	
Railway station, yard or siding	
Bridge, tunnel	
Level crossing	
Road over railway	
Railway over road	
Tramway or bush railway	

MISCELLANEOUS

Residential area	
Large buildings	
Isolated building	
Homestead, stockyard	
Glasshouse or greenhouse	
Church, cemetery, grave	
Training track	
Golf course, helipad	
Historic Māori pā, redoubt, monument, plaque or signpost	
Reservoir covered, reservoir uncovered, tank	
Mast, tower, wind machine or wind turbine	
Shipwreck, lighthouse, beacon	
Fence (selection only)	
Pipeline above ground	
Pipeline underground	
Disused water race	
Power line on pylons (actual positions) ³	
Power line on poles (away from roads) ³	
Telephone line (away from roads) ³	
Industrial cableway	
Mine; underground, opencast	
Buried gas pipeline	

TO GIVE A GRID REFERENCE ON THIS MAP (To nearest 100 metres)

East		North	
1. Locate the first VERTICAL grid line to the LEFT of the point.		4. Locate the first HORIZONTAL grid line BELOW the point.	
2. Read the grid values labelling the line in either the top or bottom margin or across the middle of the map.	49	5. Read the grid values labelling the line in either the left or right margin of the map.	34
3. Estimate tenths of a grid square eastwards from the grid line to the point.	0	6. Estimate tenths of a grid square northwards from the grid line to the point.	0
	490		340

RELIEF FEATURES ⁴

Index contour	
Intermediate contours	
Perennial snow and ice contours	
Supplementary contour	
Depression contours	
Shallow depression, small depression or shaft	
Beaconed trig station (with trig identification code)	
Elevation in metres	
Cliff, terrace, slip	
Rock outcrops	
Stopbank, cutting	
Embankment or causeway	
Saddle, cave	
Alpine features	
Moraine	
Moraine wall	
Scree	

WATER FEATURES

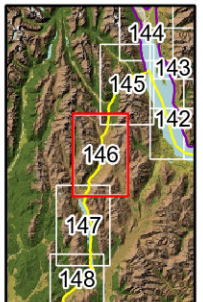
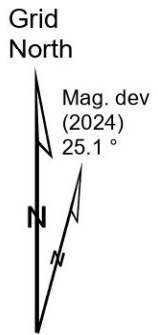
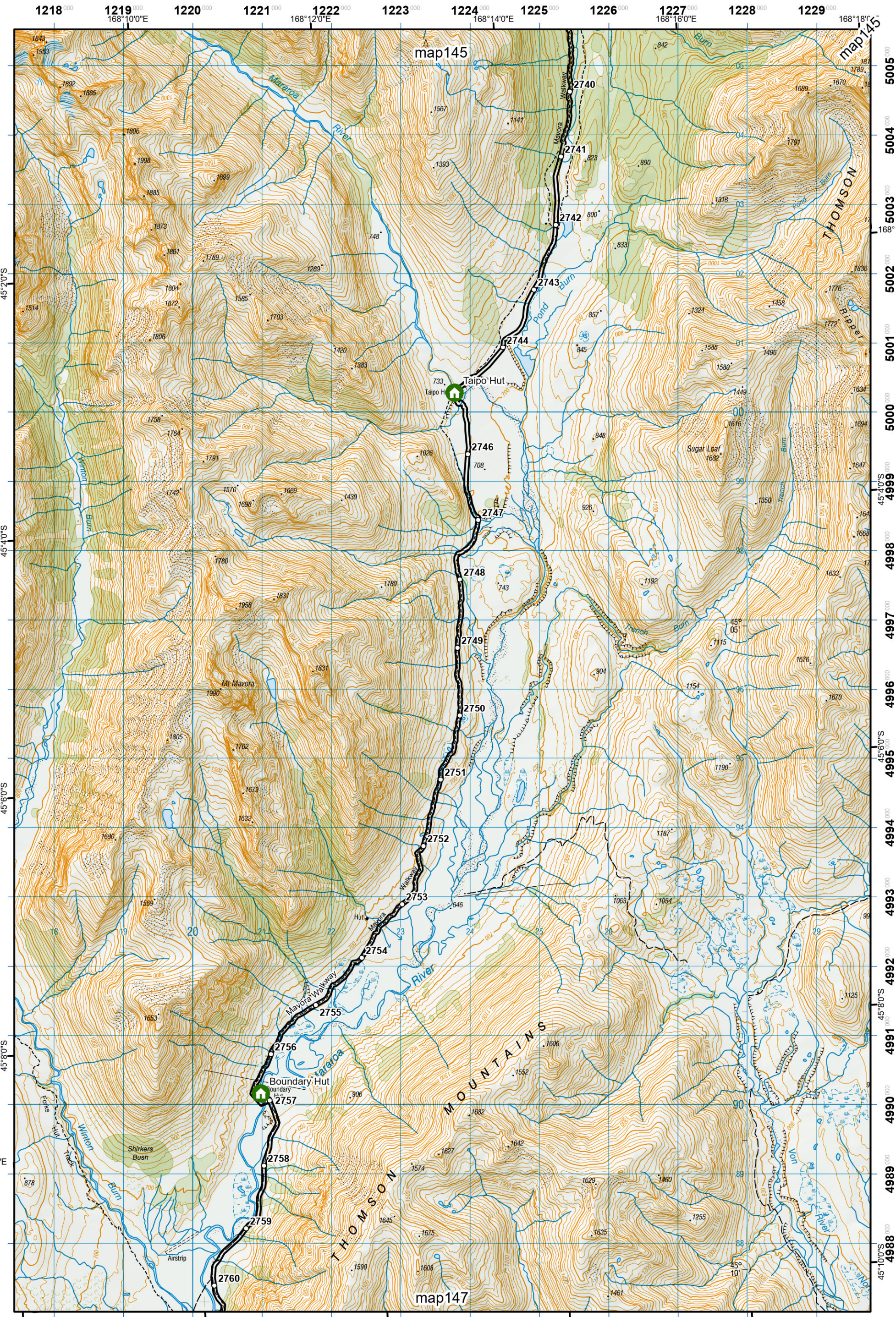
Coastal rocks	
Shoal or reef	
Sand and mud	
Sand	
Shingle	
Swamp	
Boat ramp	
Breakwater, wharf, jetty	
Slipway	
Marine farm, seawall	
Dam, floodgate, weir	
Waterfall, rapids	
Cold spring, hot spring	
Fumarole, geothermal bore	
Watercourse, drain	
Canal; large, small	
Stream disappearing into ground	

VEGETATION FEATURES

Native forest	
Exotic coniferous forest	
Exotic non-coniferous forest	
Scrub	
Scattered scrub	
Shelter belt	
Trees	
Orchard or vineyard or plantation	
Mangroves	

IMPORTANT INFORMATION:

- Representation on this map of a road or track does not necessarily indicate public right of access.
- Closed tracks or routes on this map are defined as being no longer maintained or passable and should not be used by recreationalists. The Department of Conservation or other authorities should be contacted for the latest information on tracks and huts.
- Not all aerial wires, cableways and obstructions that could be hazardous to aircraft are shown on this map.
- Contours and spot elevations in forest and snow areas may be less accurate.



- KEY**
- DOC Huts & Campsites
 - Using Te Araroa Pass
 - Included
 - 20% Discount
 - Not included
 - Private Campsites
 - YHA
 - Bypass Km Marks
 - Km Markers
 - Bypass
 - Main Trail
 - Open
 - Road section
 - Seasonal
 - Water crossing
 - Drinking water

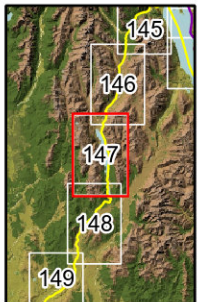
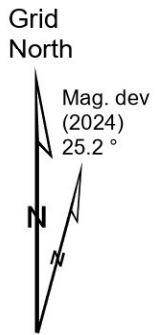
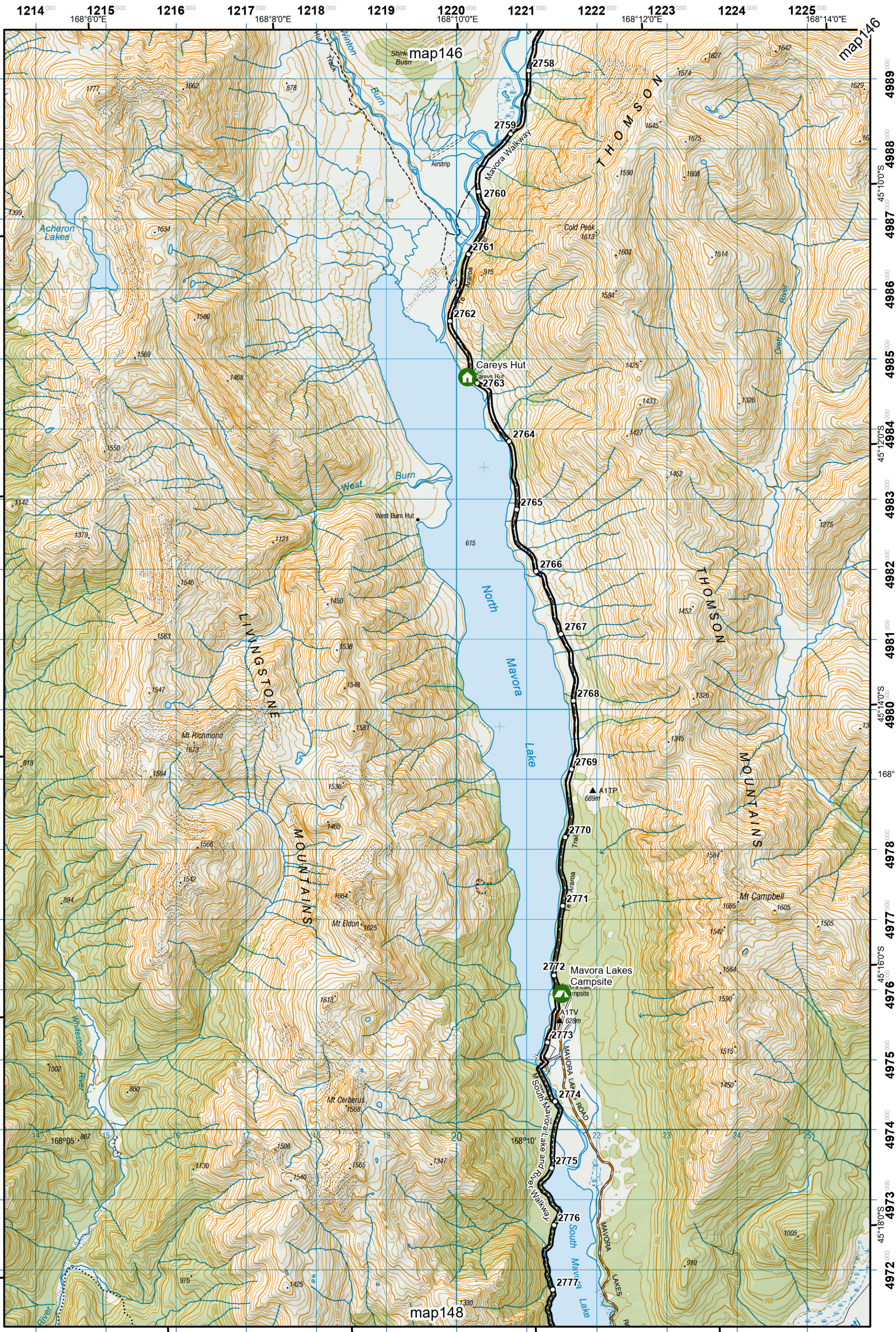


Te Araroa Trail 2024-2025 (v43)
 Last updated: 12/8/2024
 Data sources: DOC, LINZ, Geographx, Corax.
 Basemap(s): LINZ Topographic 1:50,000, Geographx 100m.
 Author(s): Herenga ā Nuku Aotearoa, Te Araroa Trust.
 For seasonally affected or bypass sections, please check the Te Araroa Website Trail Alerts page before walking.



Te Araroa

Mavora Walkway
 Southland (Maps 146 - 160)



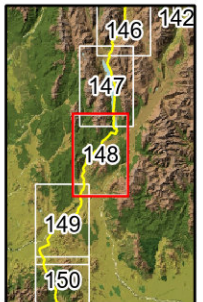
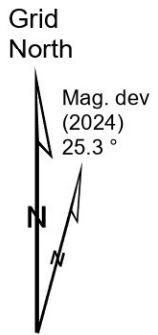
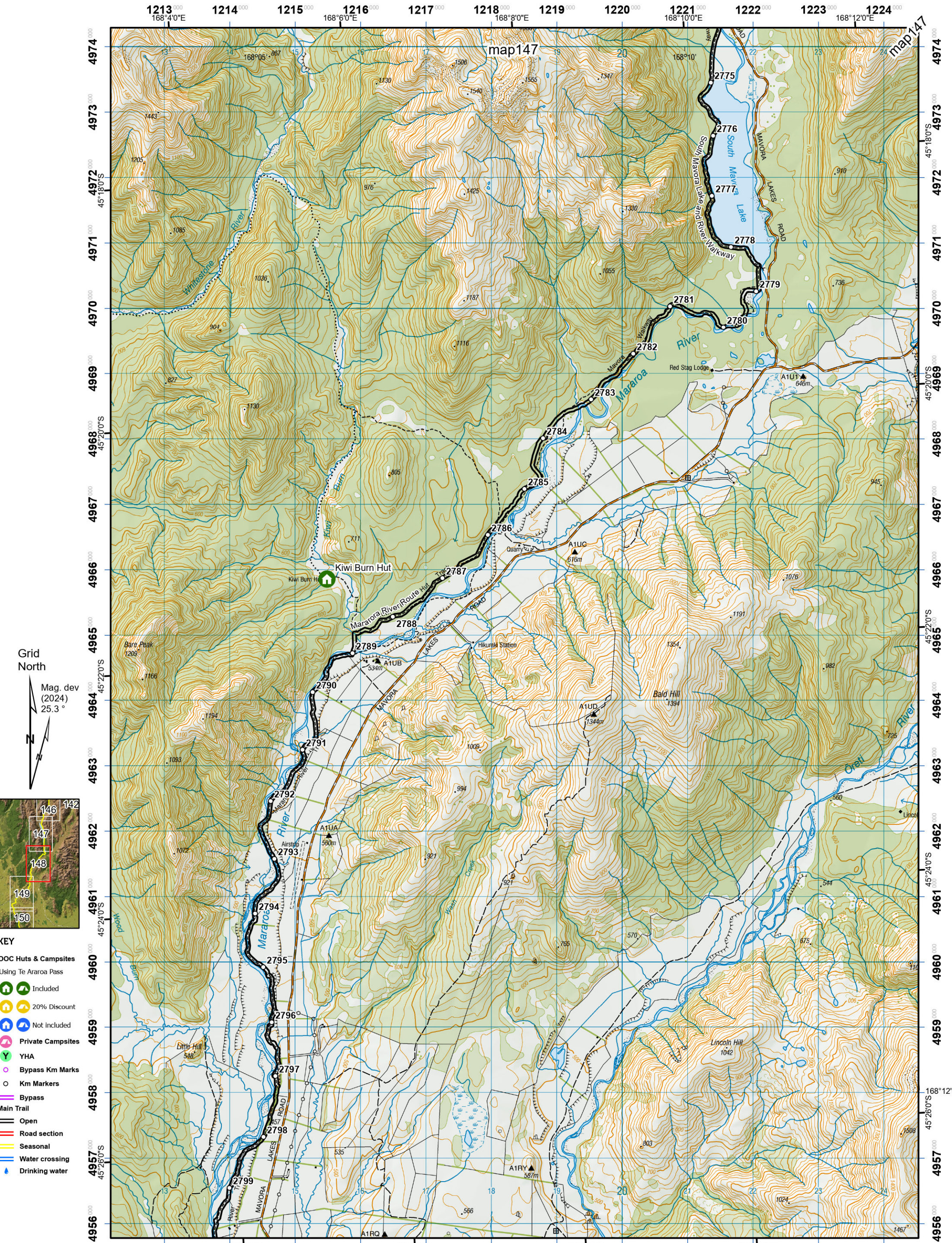
- KEY**
- DOC Huts & Campsites Using Te Araroa Pass
 - Included
 - 20% Discount
 - Not included
 - Private Campsites
 - YHA
 - Bypass Km Marks
 - Km Markers
 - Bypass
 - Main Trail
 - Open
 - Road section
 - Seasonal
 - Water crossing
 - Drinking water

Te Araroa Trail 2024-2025 (v43)
 Last updated: 12/8/2024
 Data sources: DOC, LINZ, Geographx, Corax.
 Basemap(s): LINZ Topographic 1:50,000, Geographx 100m.
 Author(s): Herenga ā Nuku Aotearoa, Te Araroa Trust.
 For seasonally affected or bypass sections, please check the Te Araroa Website Trail Alerts page before walking.



Mavora Walkway
 - Mararoa River Track
 Southland (Maps 146 - 160)





- KEY**
- DOC Huts & Campsites Using Te Araroa Pass
 - Included
 - 20% Discount
 - Not included
 - Private Campsites
 - YHA
 - Bypass Km Marks
 - Km Markers
 - Bypass
 - Main Trail
 - Open
 - Road section
 - Seasonal
 - Water crossing
 - Drinking water

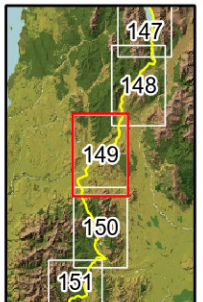
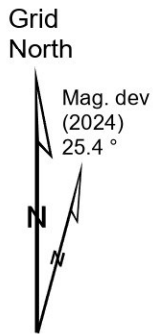
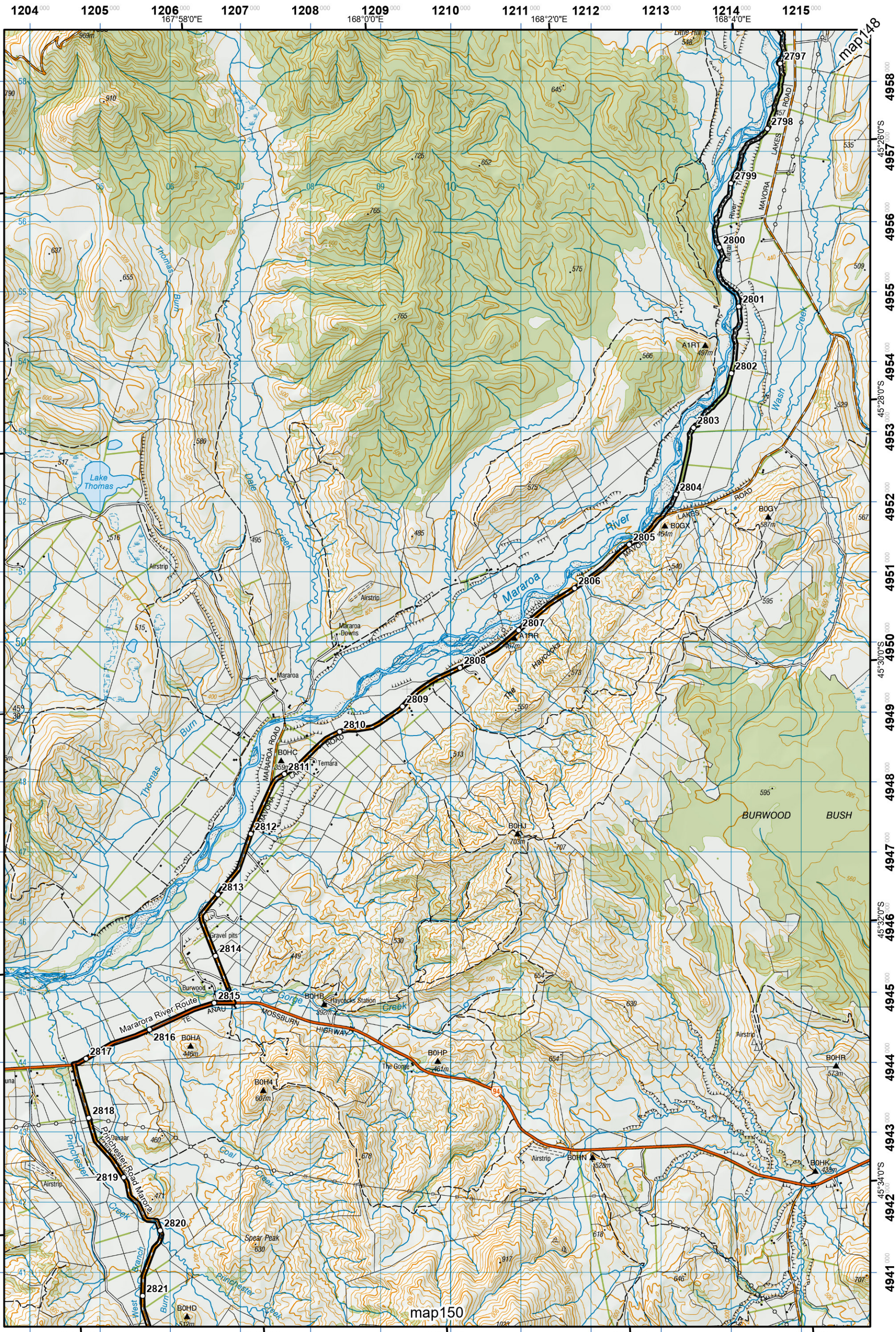


Te Araroa Trail 2024-2025 (v43)
 Last updated: 12/8/2024
 Data sources: DOC, LINZ, Geographx, Corax.
 Basemap(s): LINZ Topographic 1:50,000, Geographx 100m.
 Author(s): Herenga ā Nuku Aotearoa, Te Araroa Trust.
 For seasonally affected or bypass sections, please check the Te Araroa Website Trail Alerts page before walking.



Te Araroa

Mararoa River Track
 Southland (Maps 146 - 160)



- KEY**
- DOC Huts & Campsites Using Te Araroa Pass**
 - Included
 - 20% Discount
 - Not included
 - Private Campsites
 - YHA
 - Bypass Km Marks
 - Km Markers
 - Bypass
 - Main Trail
 - Open
 - Road section
 - Seasonal
 - Water crossing
 - Drinking water

1204 1205 1206 1207 1208 1209 1210 1211 1212 1213 1214 1215
 167°56'0"E 167°58'0"E 168°0'0"E 168°2'0"E 168°4'0"E
 4941 4942 4943 4944 4945 4946 4947 4948 4949 4950 4951 4952 4953 4954 4955 4956 4957 4958
 167°56'0"E 167°58'0"E 168°0'0"E 168°2'0"E 168°4'0"E

Te Araroa Trail 2024-2025 (v43)
 Last updated: 12/8/2024
 Data sources: DOC, LINZ, Geographx, Corax.
 Basemap(s): LINZ Topographic 1:50,000, Geographx 100m.
 Author(s): Herenga ā Nuku Aotearoa, Te Araroa Trust.
 For seasonally affected or bypass sections, please check the Te Araroa Website Trail Alerts page before walking.

Te Araroa

Mararoa River Track
 - Takitimu Track
 Southland (Maps 146 - 160)



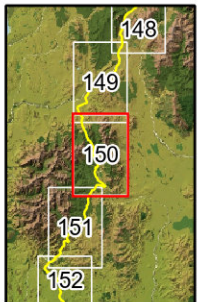
1204 1205 1206 1207 1208 1209 1210 1211 1212 1213 1214 1215



map149

map151

Grid North



- KEY**
- DOC Huts & Campsites Using Te Araroa Pass
 - Included
 - 20% Discount
 - Not included
 - Private Campsites
 - YHA
 - Bypass Km Marks
 - Km Markers
 - Bypass
 - Main Trail
 - Open
 - Road section
 - Seasonal
 - Water crossing
 - Drinking water

Te Araroa Trail 2024-2025 (v43)
 Last updated: 12/8/2024
 Data sources: DOC, LINZ, Geographx, Corax.
 Basemap(s): LINZ Topographic 1:50,000, Geographx 100m.
 Author(s): Herenga ā Nuku Aotearoa, Te Araroa Trust.
 For seasonally affected or bypass sections, please check the Te Araroa Website Trail Alerts page before walking.

Te Araroa

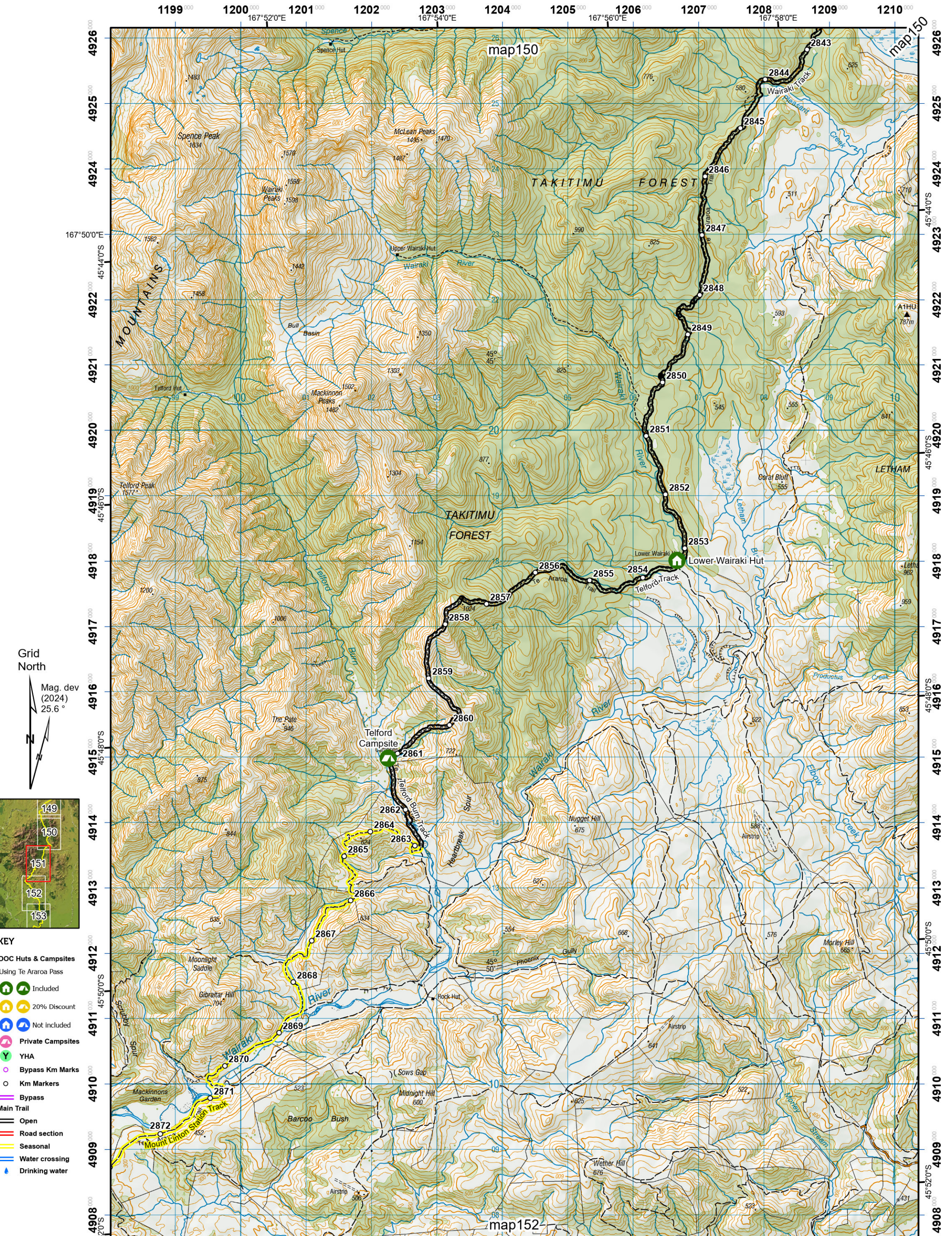
Southland (Maps 146 - 160)

0 0.5 1 2 Km
1:50,000 at A3

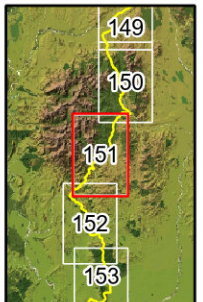
Takitimu Track

150





Grid North
Mag. dev (2024) 25.6°



- KEY**
- DOC Huts & Campsites Using Te Araroa Pass
 - Included
 - 20% Discount
 - Not included
 - Private Campsites
 - YHA
 - Bypass Km Marks
 - Km Markers
 - Bypass
 - Main Trail
 - Open
 - Road section
 - Seasonal
 - Water crossing
 - Drinking water



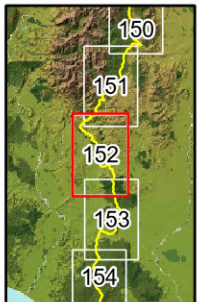
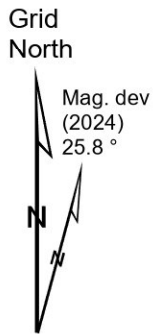
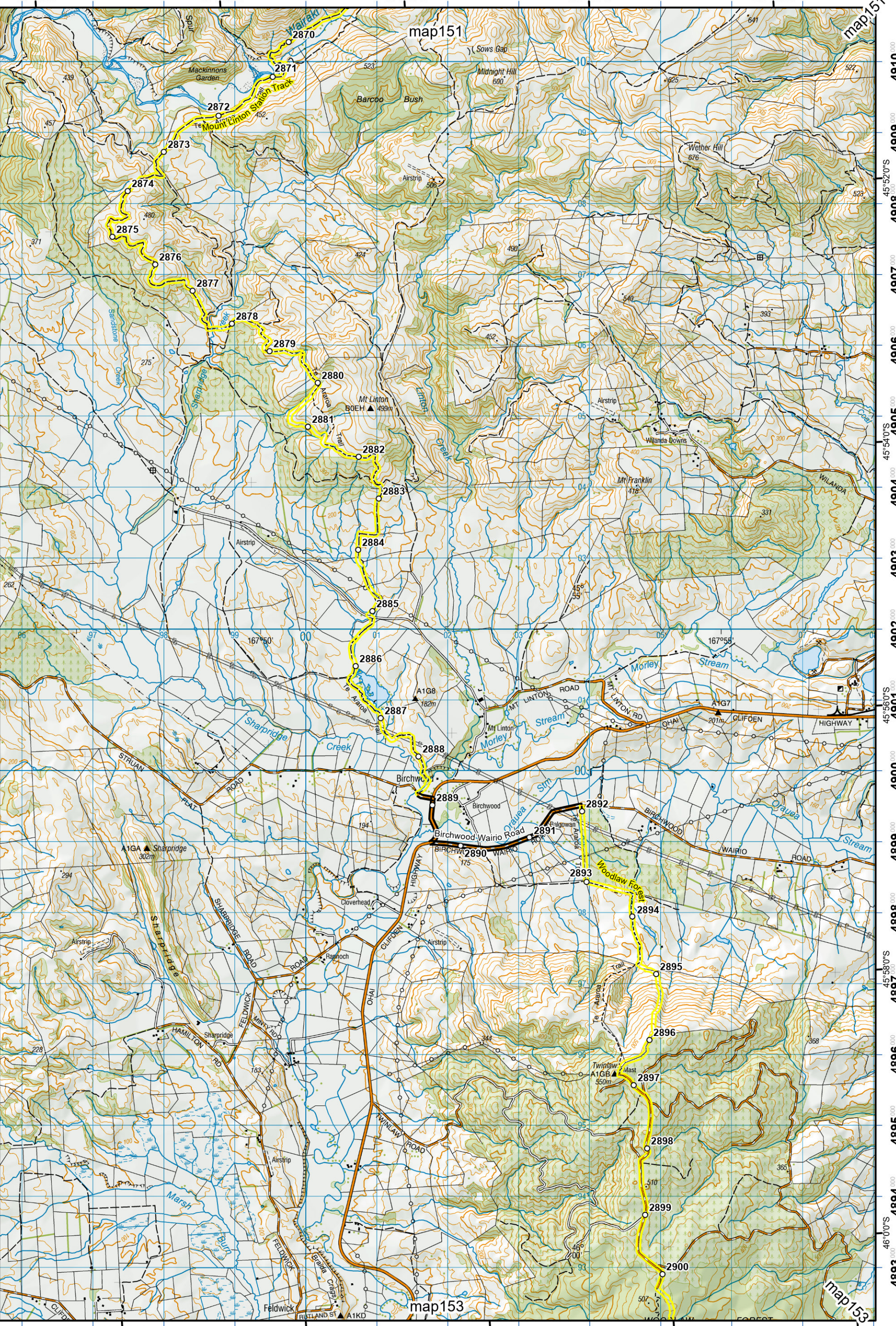
Te Araroa Trail 2024-2025 (v43)
 Last updated: 12/8/2024
 Data sources: DOC, LINZ, Geographx, Corax.
 Basemap(s): LINZ Topographic 1:50,000, Geographx 100m.
 Author(s): Herenga ā Nuku Aotearoa, Te Araroa Trust.
 For seasonally affected or bypass sections, please check the Te Araroa Website Trail Alerts page before walking.

0 0.5 1 2 Km
 1:50,000 at A3

Te Araroa

Takitimu Track
 Southland (Maps 146 - 160)

1196 000 1197 000 1198 000 1199 000 1200 000 1201 000 1202 000 1203 000 1204 000 1205 000 1206 000 1207 000 1208 000
167°48'0"E 167°50'0"E 167°52'0"E 167°54'0"E 167°56'0"E



- KEY**
- DOC Huts & Campsites Using Te Araroa Pass
 - Included
 - 20% Discount
 - Not included
 - Private Campsites
 - YHA
 - Bypass Km Marks
 - Km Markers
 - Bypass
 - Main Trail
 - Open
 - Road section
 - Seasonal
 - Water crossing
 - Drinking water

1196 000 1197 000 1198 000 1199 000 1200 000 1201 000 1202 000 1203 000 1204 000 1205 000 1206 000 1207 000 1208 000
167°48'0"E 167°50'0"E 167°52'0"E 167°54'0"E 167°56'0"E

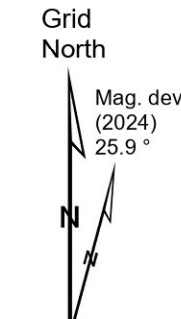
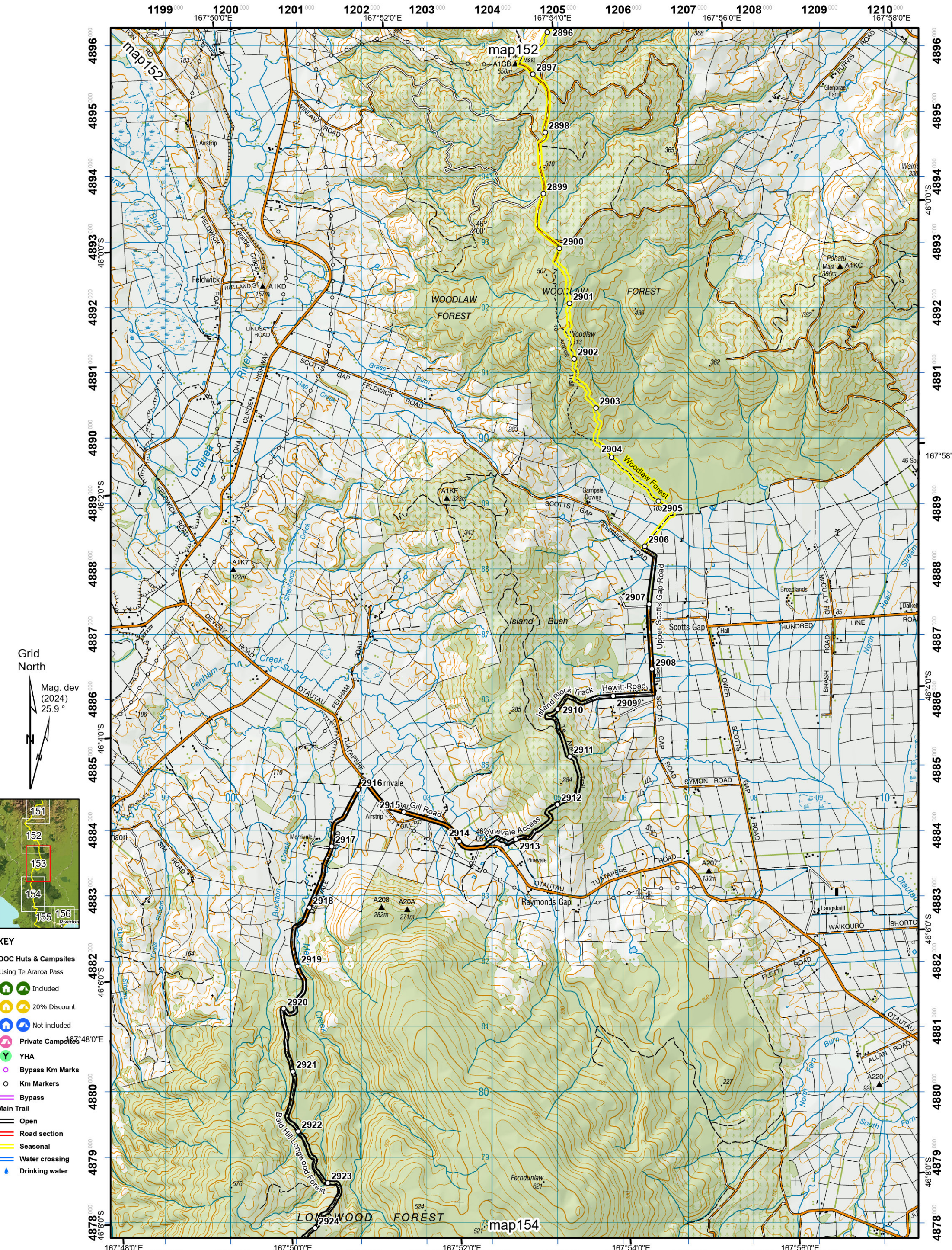
Te Araroa Trail 2024-2025 (v43)
 Last updated: 12/8/2024
 Data sources: DOC, LINZ, Geographx, Corax.
 Basemap(s): LINZ Topographic 1:50,000, Geographx 100m.
 Author(s): Herenga ā Nuku Aotearoa, Te Araroa Trust.
 For seasonally affected or bypass sections, please check the Te Araroa Website Trail Alerts page before walking.



Takitimu Track
 - Birchwood to Merrivale
 Southland (Maps 146 - 160)

152





- KEY**
- DOC Huts & Campsites Using Te Araroa Pass
 - Included (Green house icon)
 - 20% Discount (Yellow house icon)
 - Not included (Blue house icon)
 - Private Campsites (Pink house icon)
 - YHA (Green Y icon)
 - Bypass Km Marks (Pink circle icon)
 - Km Markers (Black circle icon)
 - Bypass (Pink line icon)
 - Main Trail (Black line icon)
 - Open (Black line icon)
 - Road section (Red line icon)
 - Seasonal (Yellow line icon)
 - Water crossing (Blue line icon)
 - Drinking water (Blue drop icon)



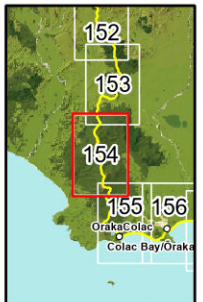
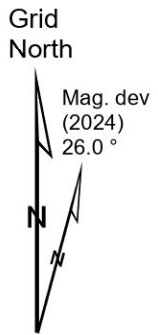
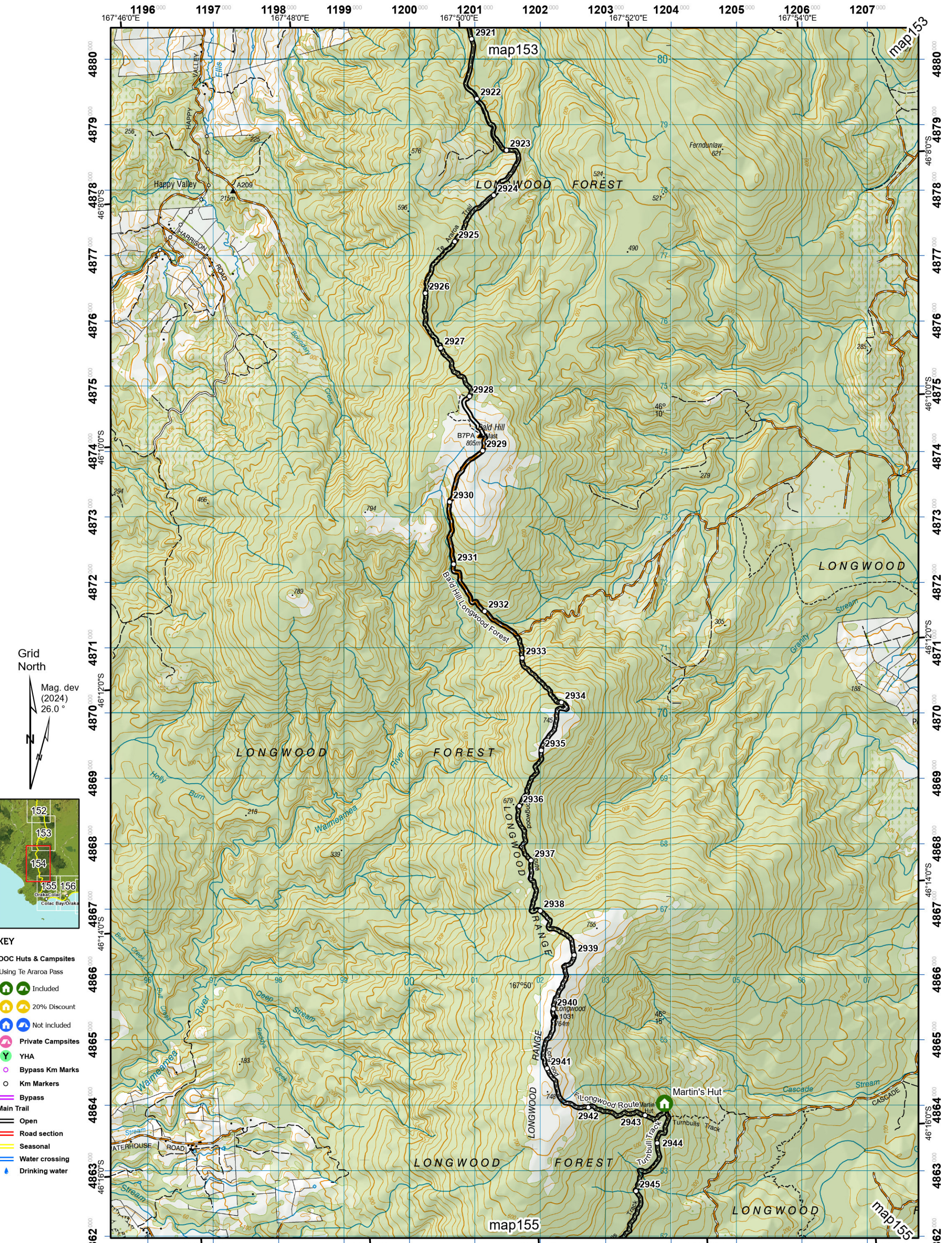
Te Araroa Trail 2024-2025 (v43)
 Last updated: 12/8/2024
 Data sources: DOC, LINZ, Geographx, Corax.
 Basemap(s): LINZ Topographic 1:50,000, Geographx 100m.
 Author(s): Herenga ā Nuku Aotearoa, Te Araroa Trust.
 For seasonally affected or bypass sections, please check the Te Araroa Website Trail Alerts page before walking.

Te Araroa



Birchwood to Merrivale
 - Longwood Forest Track
 Southland (Maps 146 - 160)

153



- KEY**
- DOC Huts & Campsites
 - Using Te Araroa Pass
 - Included
 - 20% Discount
 - Not included
 - Private Campsites
 - YHA
 - Bypass Km Marks
 - Km Markers
 - Bypass
 - Main Trail
 - Open
 - Road section
 - Seasonal
 - Water crossing
 - Drinking water



Te Araroa Trail 2024-2025 (v43)
 Last updated: 12/8/2024
 Data sources: DOC, LINZ, Geographx, Corax.
 Basemap(s): LINZ Topographic 1:50,000, Geographx 100m.
 Author(s): Herenga ā Nuku Aotearoa, Te Araroa Trust.
 For seasonally affected or bypass sections, please check the Te Araroa Website Trail Alerts page before walking.

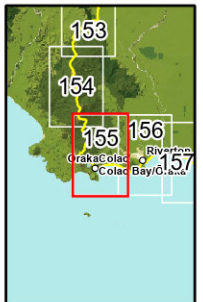


Te Araroa

Longwood Forest Track
 Southland (Maps 146 - 160)



Grid North
Mag. dev (2024)
26.2°



- KEY**
- DOC Huts & Campsites Using Te Araroa Pass
 - Included
 - 20% Discount
 - Not included
 - Private Campsites
 - YHA
 - Bypass Km Marks
 - Km Markers
 - Bypass
 - Main Trail
 - Open
 - Road section
 - Seasonal
 - Water crossing
 - Drinking water

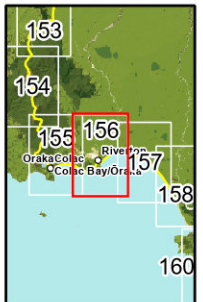
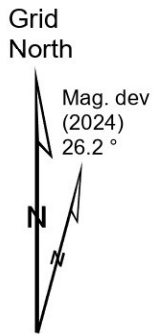


Te Araroa Trail 2024-2025 (v43)
Last updated: 12/8/2024
Data sources: DOC, LINZ, Geographx, Corax.
Basemap(s): LINZ Topographic 1:50,000, Geographx 100m.
Author(s): Herenga ā Nuku Aotearoa, Te Araroa Trust.
For seasonally affected or bypass sections, please check the Te Araroa Website Trail Alerts page before walking.

Te Araroa

0 0.5 1 2 Km
1:50,000 at A3

Longwood Forest Track
- Long Hilly Track
Southland (Maps 146 - 160)



- KEY**
- DOC Huts & Campsites
 - Using Te Araroa Pass
 - Included
 - 20% Discount
 - Not included
 - Private Campsites
 - YHA
 - Bypass Km Marks
 - Km Markers
 - Bypass
 - Main Trail
 - Open
 - Road section
 - Seasonal
 - Water crossing
 - Drinking water



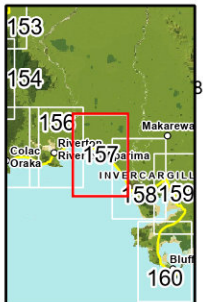
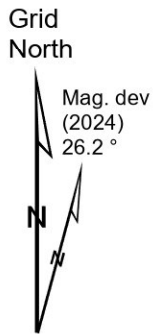
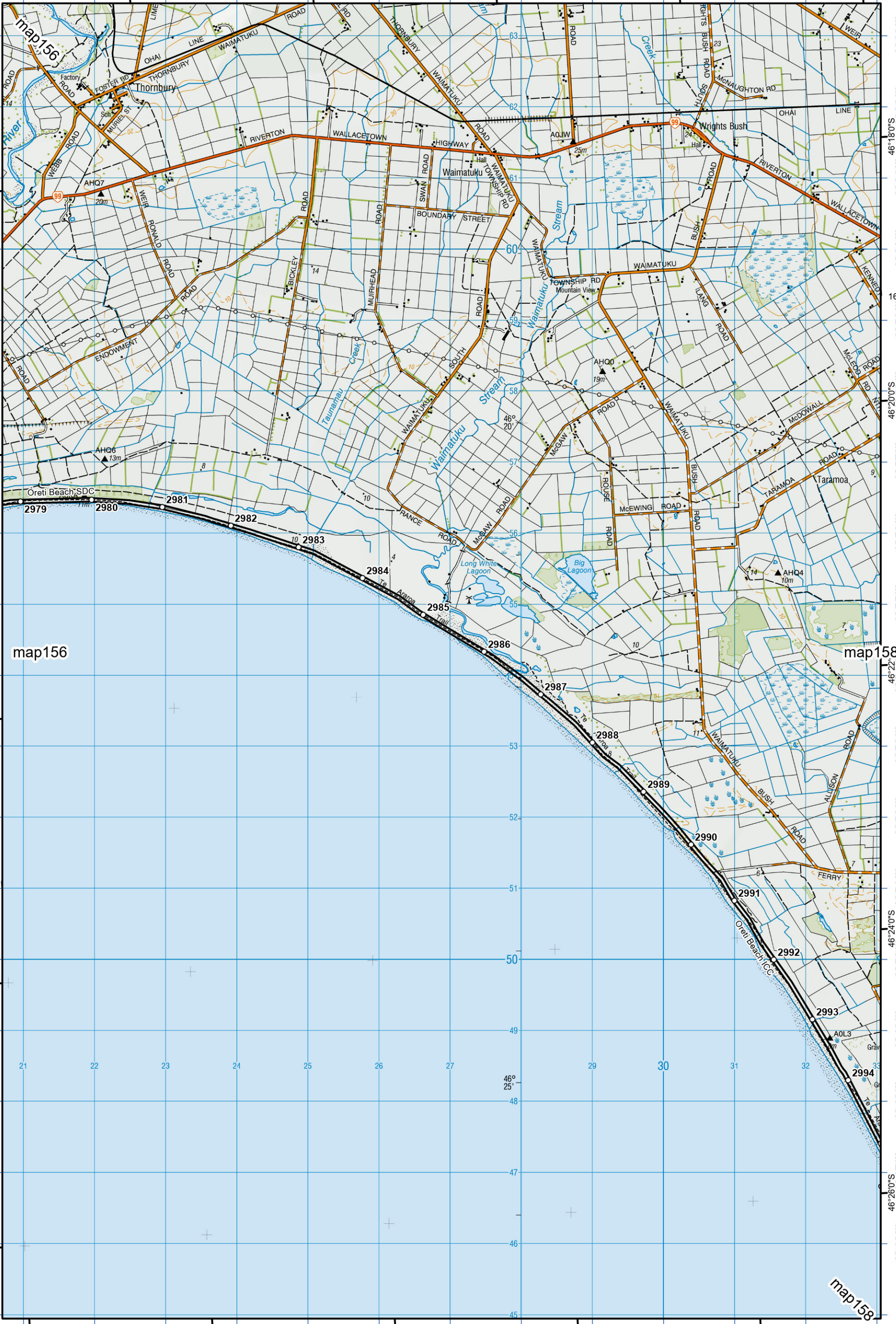
Te Araroa Trail 2024-2025 (v43)
 Last updated: 12/8/2024
 Data sources: DOC, LINZ, Geographx, Corax.
 Basemap(s): LINZ Topographic 1:50,000, Geographx 100m.
 Author(s): Herenga ā Nuku Aotearoa, Te Araroa Trust.
 For seasonally affected or bypass sections, please check the Te Araroa Website Trail Alerts page before walking.



Tihaka Beach Track
 - Oreti Beach Track
 Southland (Maps 146 - 160)

156

1221 000 1222 000 1223 000 1224 000 1225 000 1226 000 1227 000 1228 000 1229 000 1230 000 1231 000 1232 000 1233 000
168°6'0"E 168°8'0"E 168°10'0"E 168°12'0"E 168°14'0"E



- KEY**
- DOC Huts & Campsites
 - Using Te Araroa Pass
 - Included
 - 20% Discount
 - Not included
 - Private Campsites
 - YHA
 - Bypass Km Marks
 - Km Markers
 - Bypass
 - Main Trail
 - Open
 - Road section
 - Seasonal
 - Water crossing
 - Drinking water

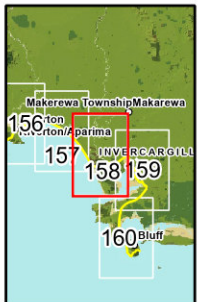
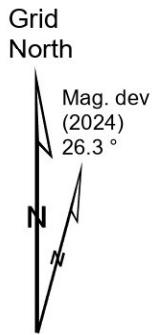
168°4'0"E 1221 000 1222 000 1223 000 168°6'0"E 1224 000 1225 000 168°8'0"E 1226 000 1227 000 168°10'0"E 1228 000 1229 000 168°12'0"E 1230 000 1231 000 168°14'0"E 1232 000 1233 000
46°22'0"S 4850 000 4851 000 4852 000 4853 000 4854 000 4855 000 4856 000 4857 000 4858 000 4859 000 4860 000 4861 000 4862 000 4863 000

Te Araroa

Southland (Maps 146 - 160)

Te Araroa Trail 2024-2025 (v43)
 Last updated: 12/8/2024
 Data sources: DOC, LINZ, Geographx, Corax.
 Basemap(s): LINZ Topographic 1:50,000, Geographx 100m.
 Author(s): Herenga ā Nuku Aotearoa, Te Araroa Trust.
 For seasonally affected or bypass sections, please check the Te Araroa Website Trail Alerts page before walking.





- KEY**
- DOC Huts & Campsites
 - Using Te Araroa Pass
 - Included
 - 20% Discount
 - Not included
 - Private Campsites
 - YHA
 - Bypass Km Marks
 - Km Markers
 - Bypass
 - Main Trail
 - Open
 - Road section
 - Seasonal
 - Water crossing
 - Drinking water

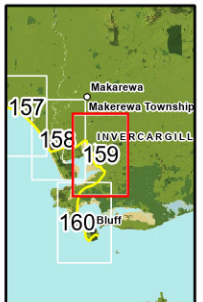
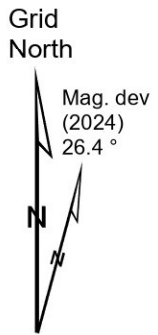
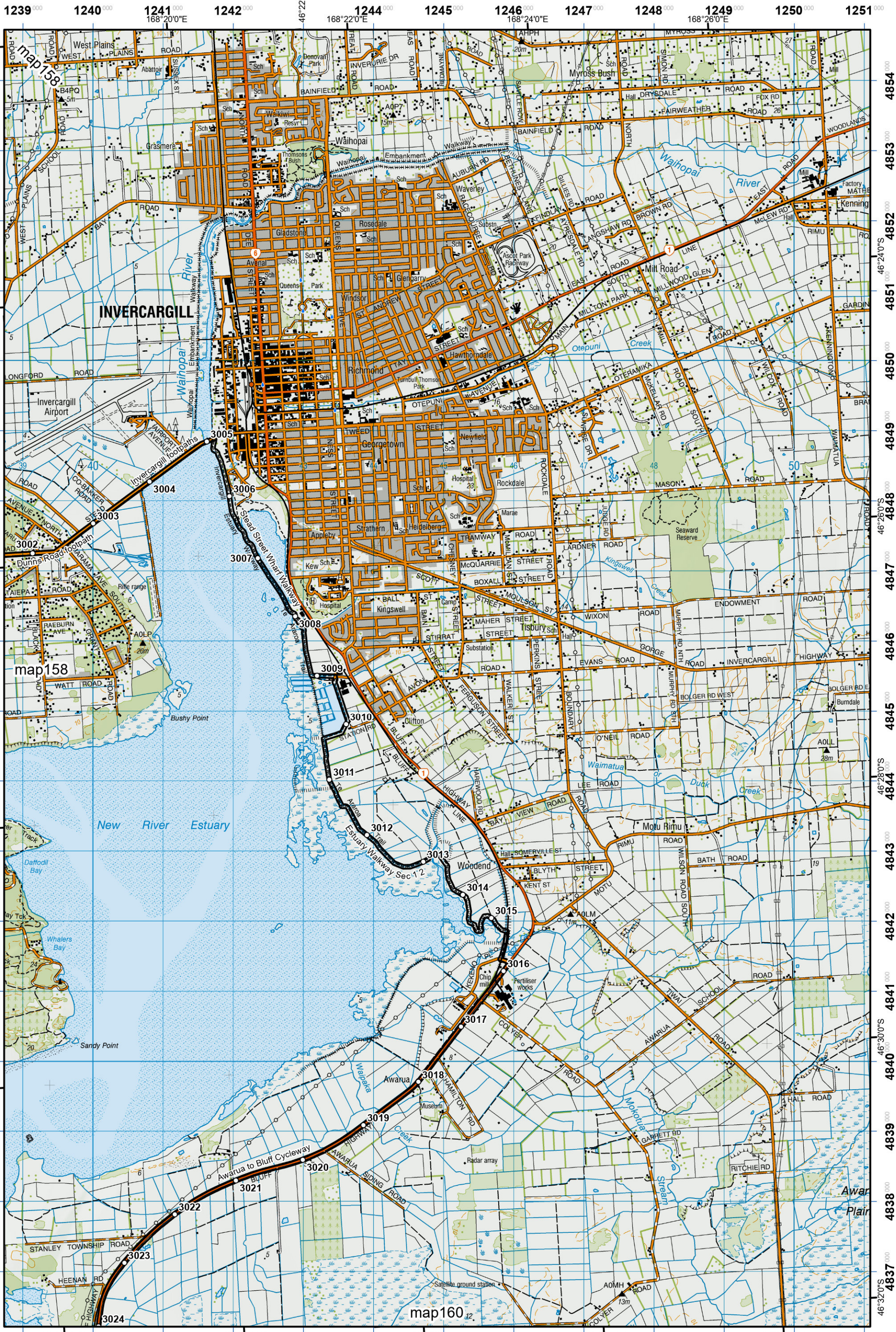


Te Araroa Trail 2024-2025 (v43)
 Last updated: 12/8/2024
 Data sources: DOC, LINZ, Geographx, Corax.
 Basemap(s): LINZ Topographic 1:50,000, Geographx 100m.
 Author(s): Herenga ā Nuku Aotearoa, Te Araroa Trust.
 For seasonally affected or bypass sections, please check the Te Araroa Website Trail Alerts page before walking.



Te Araroa

Oreti Beach Track
 - Invercargill to Bluff
 Southland (Maps 146 - 160)



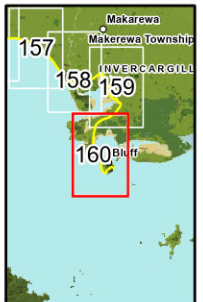
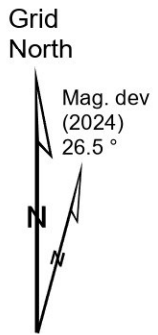
- KEY**
- DOC Huts & Campsites Using Te Araroa Pass
 - Included
 - 20% Discount
 - Not included
 - Private Campsites ●
 - YHA ●
 - Bypass Km Marks ○
 - Km Markers ○
 - Bypass —
 - Main Trail —
 - Open —
 - Road section —
 - Seasonal —
 - Water crossing —
 - Drinking water ●

Te Araroa Trail 2024-2025 (v43)
 Last updated: 12/8/2024
 Data sources: DOC, LINZ, Geographx, Corax.
 Basemap(s): LINZ Topographic 1:50,000, Geographx 100m.
 Author(s): Herenga ā Nuku Aotearoa, Te Araroa Trust.
 For seasonally affected or bypass sections, please check the Te Araroa Website Trail Alerts page before walking.



Oreti Beach Track
 - Invercargill to Bluff
 Southland (Maps 146 - 160)





- KEY**
- DOC Huts & Campsites**
Using Te Araroa Pass
- Included 168°14'0"E
 - 20% Discount
 - Not included
 - Private Campsites
 - YHA
 - Bypass Km Marks
 - Km Markers
 - Bypass
- Main Trail**
- Open
 - Road section
 - Seasonal
 - Water crossing
 - Drinking water



Te Araroa Trail 2024-2025 (v43)
 Last updated: 12/8/2024
 Data sources: DOC, LINZ, Geographx, Corax.
 Basemap(s): LINZ Topographic 1:50,000, Geographx 100m.
 Author(s): Herenga ā Nuku Aotearoa, Te Araroa Trust.
For seasonally affected or bypass sections, please check the Te Araroa Website Trail Alerts page before walking.



Te Araroa

Invercargill to Bluff
 Southland (Maps 146 - 160)