

August 2024  
Version 43  
Basemap: Geographx 100m

Scale: 1:900,000

# Te Araroa 2024-2025

Otago  
Maps 133 - 145

# BASEMAP LEGEND: LINZ TOPO 1:50,000

## ROADS AND TRACKS <sup>1</sup>

State highway .....	
Four lanes or more .....	
Two lanes (includes passing lanes) .....	
Narrow road .....	
Vehicle track .....	
Foot track .....	
Closed track (see warning note below) <sup>2</sup> .....	
Poled route, track connector .....	
sealed .....	
Road surface   metalled .....	
unmetalled .....	
Tunnel, tunnel under road .....	
Bridge; two lane, one lane .....	
Ford .....	
Gate, locked gate, cattlestop .....	
Footbridge, cableway, walkwire <sup>3</sup> .....	

## RAILWAYS

Double or multiple track .....	
Single track .....	
Railway station, yard or siding .....	
Bridge, tunnel .....	
Level crossing .....	
Road over railway .....	
Railway over road .....	
Tramway or bush railway .....	

## MISCELLANEOUS

Residential area .....	
Large buildings .....	
Isolated building .....	
Homestead, stockyard .....	
Glasshouse or greenhouse .....	
Church, cemetery, grave .....	
Training track .....	
Golf course, helipad .....	
Historic Māori pā, redoubt, monument, plaque or signpost .....	
Reservoir covered, reservoir uncovered, tank .....	
Mast, tower, wind machine or wind turbine .....	
Shipwreck, lighthouse, beacon .....	
Fence (selection only) .....	
Pipeline above ground .....	
Pipeline underground .....	
Disused water race .....	
Power line on pylons (actual positions) <sup>3</sup> .....	
Power line on poles (away from roads) <sup>3</sup> .....	
Telephone line (away from roads) <sup>3</sup> .....	
Industrial cableway .....	
Mine; underground, opencast .....	
Buried gas pipeline .....	

### TO GIVE A GRID REFERENCE ON THIS MAP (To nearest 100 metres)

East		North	
1. Locate the first VERTICAL grid line to the LEFT of the point.		4. Locate the first HORIZONTAL grid line BELOW the point.	
2. Read the grid values labelling the line in either the top or bottom margin or across the middle of the map.	49	5. Read the grid values labelling the line in either the left or right margin of the map.	34
3. Estimate tenths of a grid square eastwards from the grid line to the point.	0	6. Estimate tenths of a grid square northwards from the grid line to the point.	0
	490		340

## RELIEF FEATURES <sup>4</sup>

Index contour .....	
Intermediate contours .....	
Perennial snow and ice contours .....	
Supplementary contour .....	
Depression contours .....	
Shallow depression, small depression or shaft .....	
Beaconed trig station (with trig identification code) .....	
Elevation in metres .....	
Cliff, terrace, slip .....	
Rock outcrops .....	
Stopbank, cutting .....	
Embankment or causeway .....	
Saddle, cave .....	
Alpine features	
Moraine .....	
Moraine wall .....	
Scree .....	

## WATER FEATURES

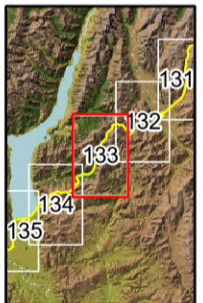
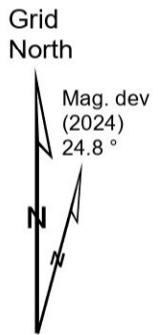
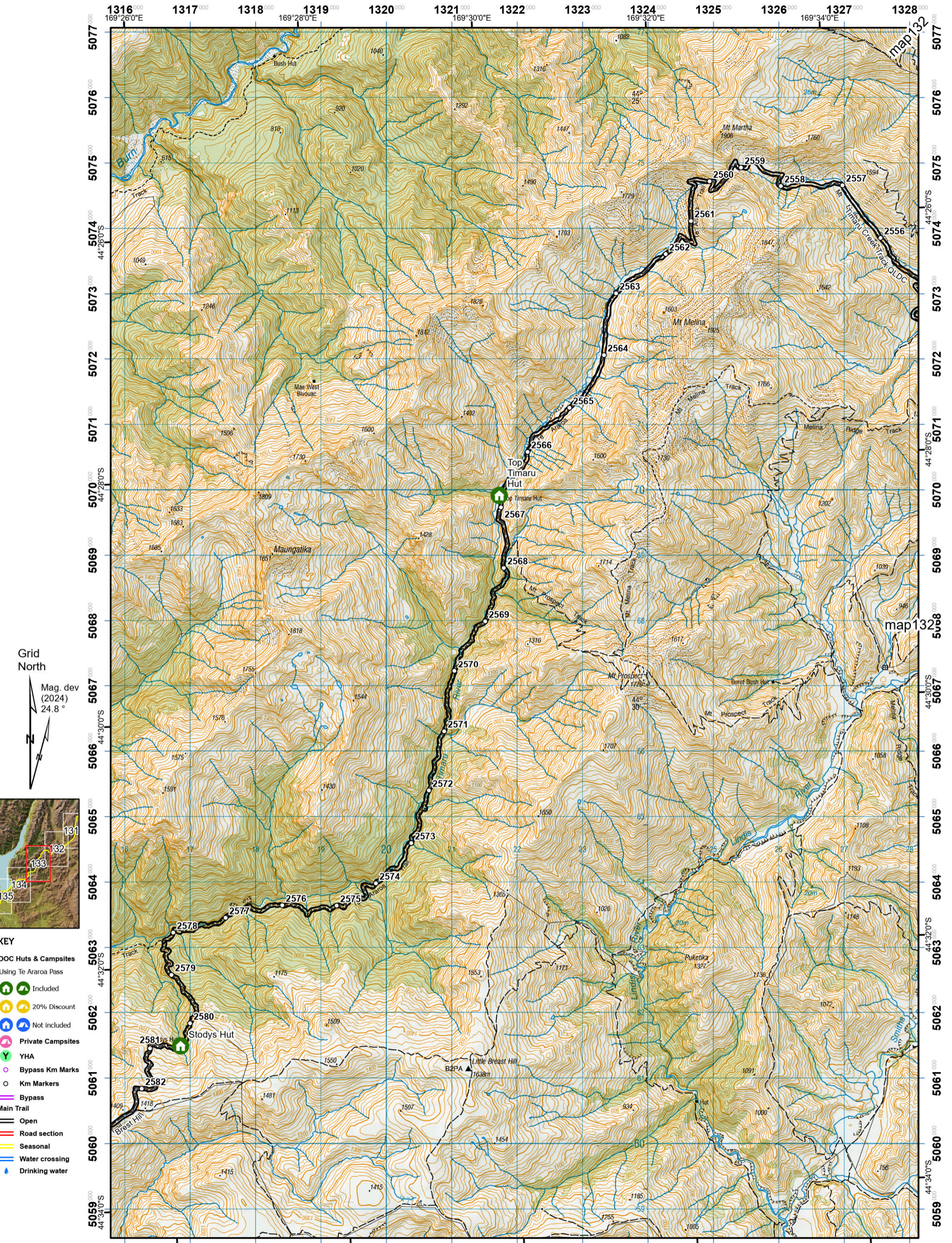
Coastal rocks .....	
Shoal or reef .....	
Sand and mud .....	
Sand .....	
Shingle .....	
Swamp .....	
Boat ramp .....	
Breakwater, wharf, jetty .....	
Slipway .....	
Marine farm, seawall .....	
Dam, floodgate, weir .....	
Waterfall, rapids .....	
Cold spring, hot spring .....	
Fumarole, geothermal bore .....	
Watercourse, drain .....	
Canal; large, small .....	
Stream disappearing into ground .....	

## VEGETATION FEATURES

Native forest .....	
Exotic coniferous forest .....	
Exotic non-coniferous forest .....	
Scrub .....	
Scattered scrub .....	
Shelter belt .....	
Trees .....	
Orchard or vineyard or plantation .....	
Mangroves .....	

### IMPORTANT INFORMATION:

- Representation on this map of a road or track does not necessarily indicate public right of access.
- Closed tracks or routes on this map are defined as being no longer maintained or passable and should not be used by recreationalists. The Department of Conservation or other authorities should be contacted for the latest information on tracks and huts.
- Not all aerial wires, cableways and obstructions that could be hazardous to aircraft are shown on this map.
- Contours and spot elevations in forest and snow areas may be less accurate.



- KEY**
- DOC Huts & Campsites Using Te Araroa Pass
    - 🏠 Included
    - 🏠 20% Discount
    - 🏠 Not included
  - 🏠 Private Campsites
  - 🌲 YHA
  - Bypass Km Marks
  - Km Markers
  - Bypass
  - Main Trail
  - Open
  - Road section
  - Seasonal
  - Water crossing
  - 💧 Drinking water

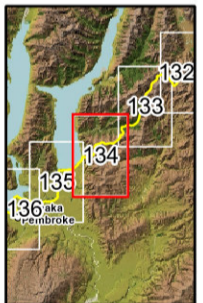
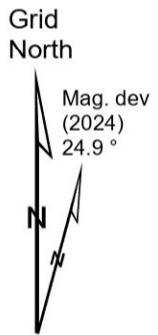
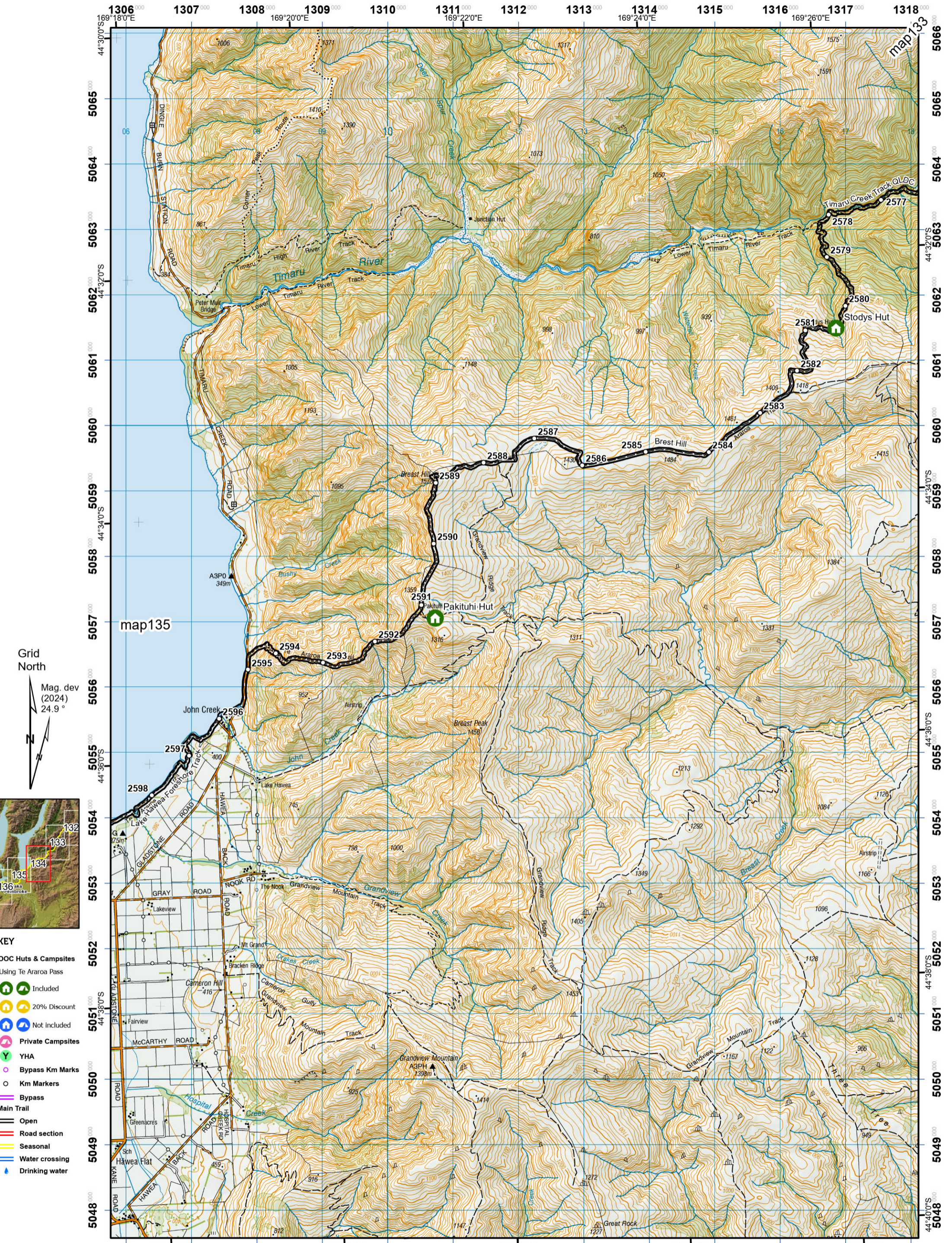


**Te Araroa Trail 2024-2025 (v43)**  
 Last updated: 12/8/2024  
 Data sources: DOC, LINZ, Geographx, Corax.  
 Basemap(s): LINZ Topographic 1:50,000, Geographx 100m.  
 Author(s): Herenga ā Nuku Aotearoa, Te Araroa Trust.  
 For seasonally affected or bypass sections, please check the Te Araroa Website Trail Alerts page before walking.



# Te Araroa

Otago (Maps 133 - 145)



- KEY**
- DOC Huts & Campsites Using Te Araroa Pass
  - Included
  - 20% Discount
  - Not included
  - Private Campsites
  - YHA
  - Bypass Km Marks
  - Km Markers
  - Bypass
  - Main Trail
  - Open
  - Road section
  - Seasonal
  - Water crossing
  - Drinking water



Te Araroa Trail 2024-2025 (v43)  
 Last updated: 12/8/2024  
 Data sources: DOC, LINZ, Geographx, Corax.  
 Basemap(s): LINZ Topographic 1:50,000, Geographx 100m.  
 Author(s): Herenga ā Nuku Aotearoa, Te Araroa Trust.  
 For seasonally affected or bypass sections, please check the Te Araroa Website Trail Alerts page before walking.

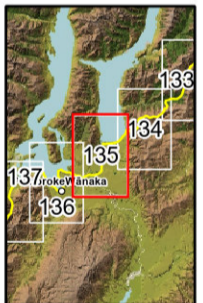
# Te Araroa



Brest Hill Track  
 - Gladstone to Wanaka  
 Otago (Maps 133 - 145)



Grid North  
Mag. dev (2024) 24.9°



- KEY**
- DOC Huts & Campsites Using Te Araroa Pass
    - Included
    - 20% Discount
    - Not included
  - Private Campsites
  - YHA
  - Bypass Km Marks
  - Km Markers
  - Bypass
  - Main Trail
    - Open
    - Road section
    - Seasonal
    - Water crossing
    - Drinking water

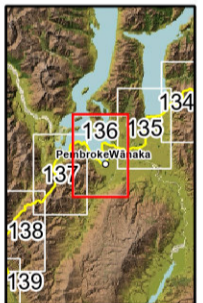
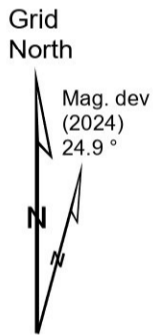


Te Araroa Trail 2024-2025 (v43)  
 Last updated: 12/8/2024  
 Data sources: DOC, LINZ, Geographx, Corax.  
 Basemap(s): LINZ Topographic 1:50,000, Geographx 100m.  
 Author(s): Herenga ā Nuku Aotearoa, Te Araroa Trust.  
 For seasonally affected or bypass sections, please check the Te Araroa Website Trail Alerts page before walking.

# Te Araroa

0 0.5 1 2 Km  
 1:50,000 at A3

Breast Hill Track  
 - Gladstone to Wanaka  
 Otago (Maps 133 - 145)



- KEY**
- DOC Huts & Campsites Using Te Araroa Pass
    - Included
    - 20% Discount
    - Not included
  - Private Campsites
  - Y YHA
  - Bypass Km Marks
  - Km Markers
  - Bypass
  - Main Trail
    - Open
    - Road section
    - Seasonal
    - Water crossing
    - Drinking water



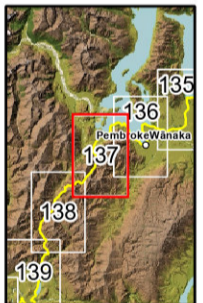
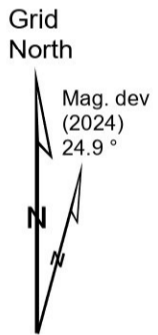
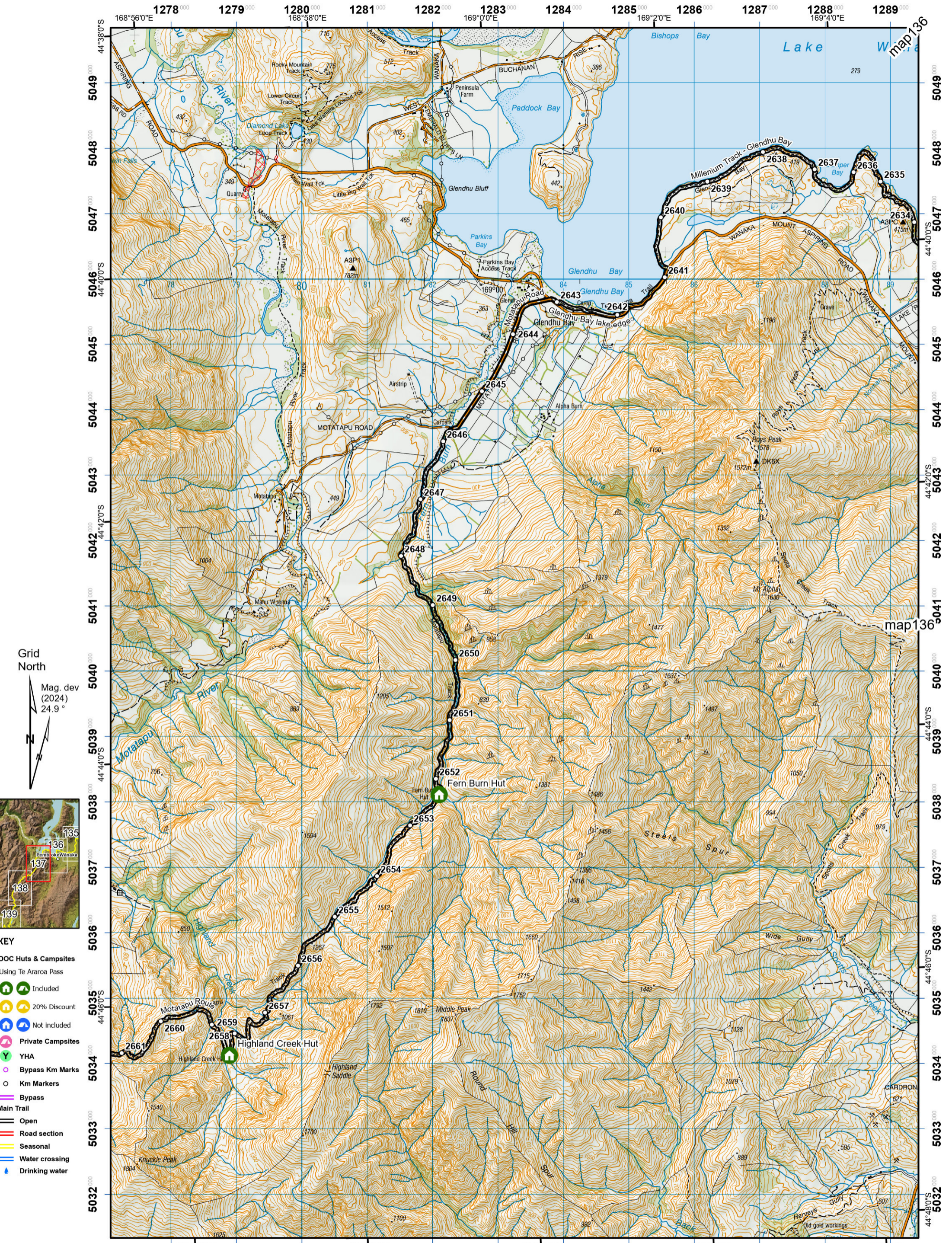
Te Araroa Trail 2024-2025 (v43)  
 Last updated: 12/8/2024  
 Data sources: DOC, LINZ, Geographix, Corax.  
 Basemap(s): LINZ Topographic 1:50,000, Geographix 100m.  
 Author(s): Herenga ā Nuku Aotearoa, Te Araroa Trust.  
 For seasonally affected or bypass sections, please check the Te Araroa Website Trail Alerts page before walking.

# Te Araroa



Gladstone to Wanaka  
 - Glendhu Bay Track  
 Otago (Maps 133 - 145)

# 136



- KEY**
- DOC Huts & Campsites Using Te Araroa Pass**
  - Included
  - 20% Discount
  - Not included
  - Private Campsites
  - YHA
  - Bypass Km Marks
  - Km Markers
  - Bypass
  - Main Trail**
  - Open
  - Road section
  - Seasonal
  - Water crossing
  - Drinking water



**Te Araroa Trail 2024-2025 (v43)**  
 Last updated: 12/8/2024  
 Data sources: DOC, LINZ, Geographx, Corax.  
 Basemap(s): LINZ Topographic 1:50,000, Geographx 100m.  
 Author(s): Herenga ā Nuku Aotearoa, Te Araroa Trust.  
 For seasonally affected or bypass sections, please check the Te Araroa Website Trail Alerts page before walking.

# Te Araroa

Glendhu Bay Track  
 - Motatapu Alpine Track  
 Otago (Maps 133 - 145)



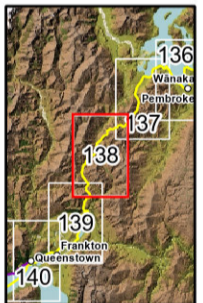
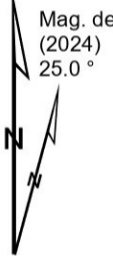
**137**

1268 1269 1270 1271 1272 1273 1274 1275 1276 1277 1278 1279



5037  
5036  
5035  
5034  
5033  
5032  
5031  
5030  
5029  
5028  
5027  
5026  
5025  
5024  
5023  
5022  
5021  
5020  
5019

Grid North



- KEY**
- DOC Huts & Campsites Using Te Araroa Pass
    - Included
    - 20% Discount
    - Not included
  - Private Campsites
  - YHA
  - Bypass Km Marks
  - Km Markers
  - Bypass
  - Main Trail
  - Open
  - Road section
  - Seasonal
  - Water crossing
  - Drinking water

1268 168°48'0"E 1269 1270 168°50'0"E 1271 1272 168°52'0"E 1273 1274 168°54'0"E 1275 1276 168°56'0"E 1277 1278 168°58'0"E 1279

# Te Araroa

Motatapu Alpine Track

Otago (Maps 133 - 145)

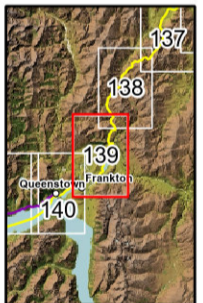
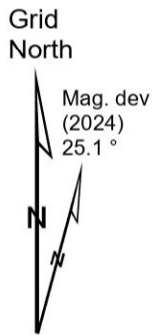
Te Araroa Trail 2024-2025 (v43)  
 Last updated: 12/8/2024  
 Data sources: DOC, LINZ, Geographx, Corax.  
 Basemap(s): LINZ Topographic 1:50,000, Geographx 100m.  
 Author(s): Herenga ā Nuku Aotearoa, Te Araroa Trust.  
 For seasonally affected or bypass sections, please check the Te Araroa Website Trail Alerts page before walking.



# 138







- KEY**
- DOC Huts & Campsites Using Te Araroa Pass
    - Included
    - 20% Discount
    - Not included
  - Private Campsites
  - YHA
  - Bypass Km Marks
  - Km Markers
  - Bypass
  - Main Trail
  - Open
  - Road section
  - Seasonal
  - Water crossing
  - Drinking water



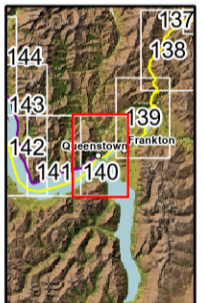
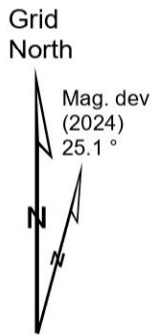
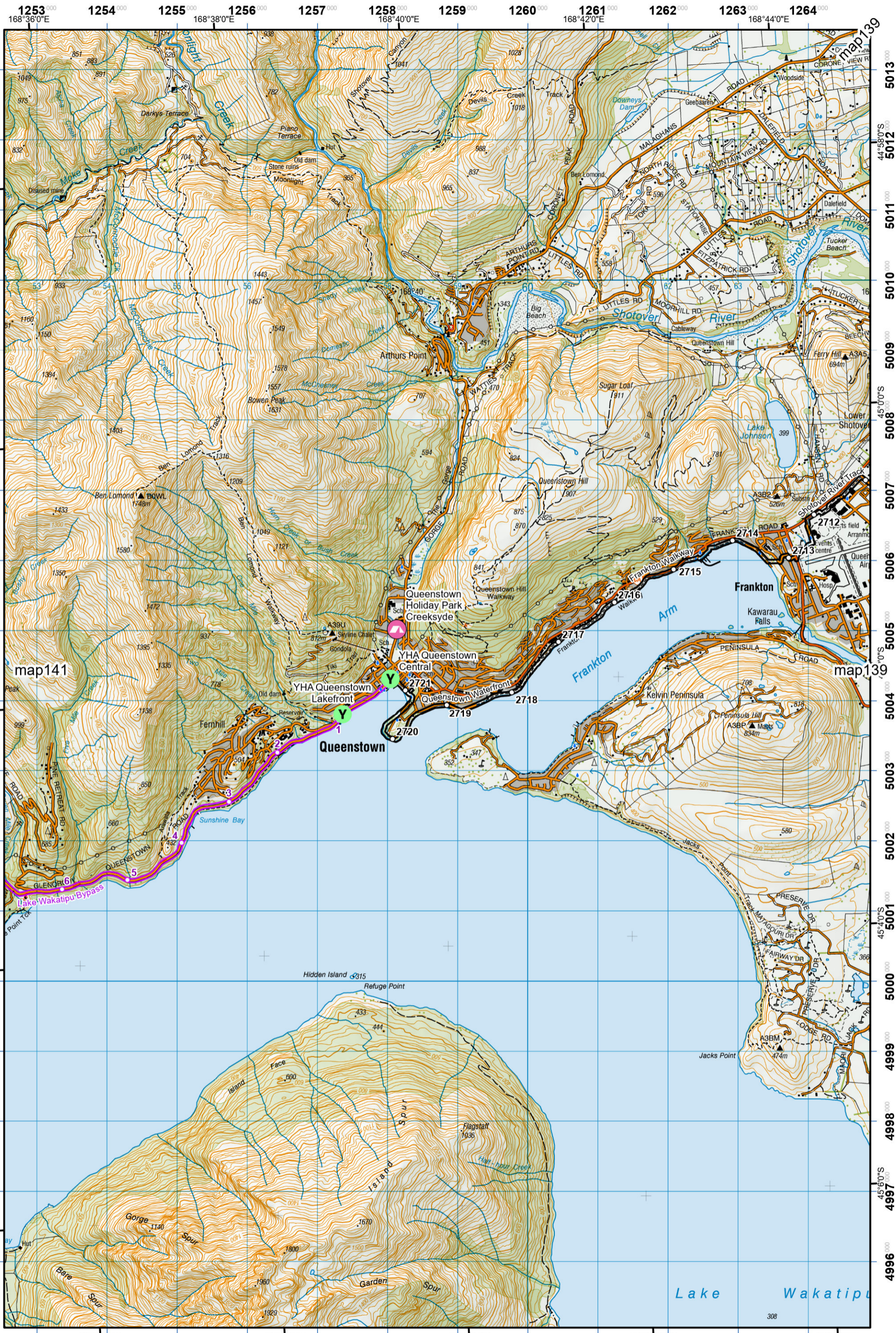
Te Araroa Trail 2024-2025 (v43)  
 Last updated: 12/8/2024  
 Data sources: DOC, LINZ, Geographx, Corax.  
 Basemap(s): LINZ Topographic 1:50,000, Geographx 100m.  
 Author(s): Herenga ā Nuku Aotearoa, Te Araroa Trust.  
 For seasonally affected or bypass sections, please check the Te Araroa Website Trail Alerts page before walking.

# Te Araroa

0 0.5 1 2 Km  
 1:50,000 at A3

Motatapu Alpine Track  
 - Wakatipu Track  
 Otago (Maps 133 - 145)

# 139



- KEY**
- DOC Huts & Campsites**
  - Using Te Araroa Pass
    - Included
    - 20% Discount
    - Not included
  - Private Campsites
  - YHA
  - Bypass Km Marks
  - Km Markers
  - Bypass
  - Main Trail
  - Open
  - Road section
  - Seasonal
  - Water crossing
  - Drinking water

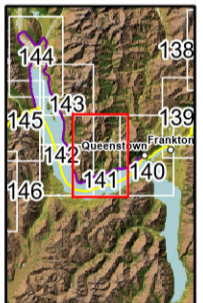
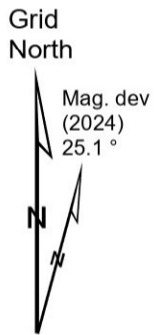
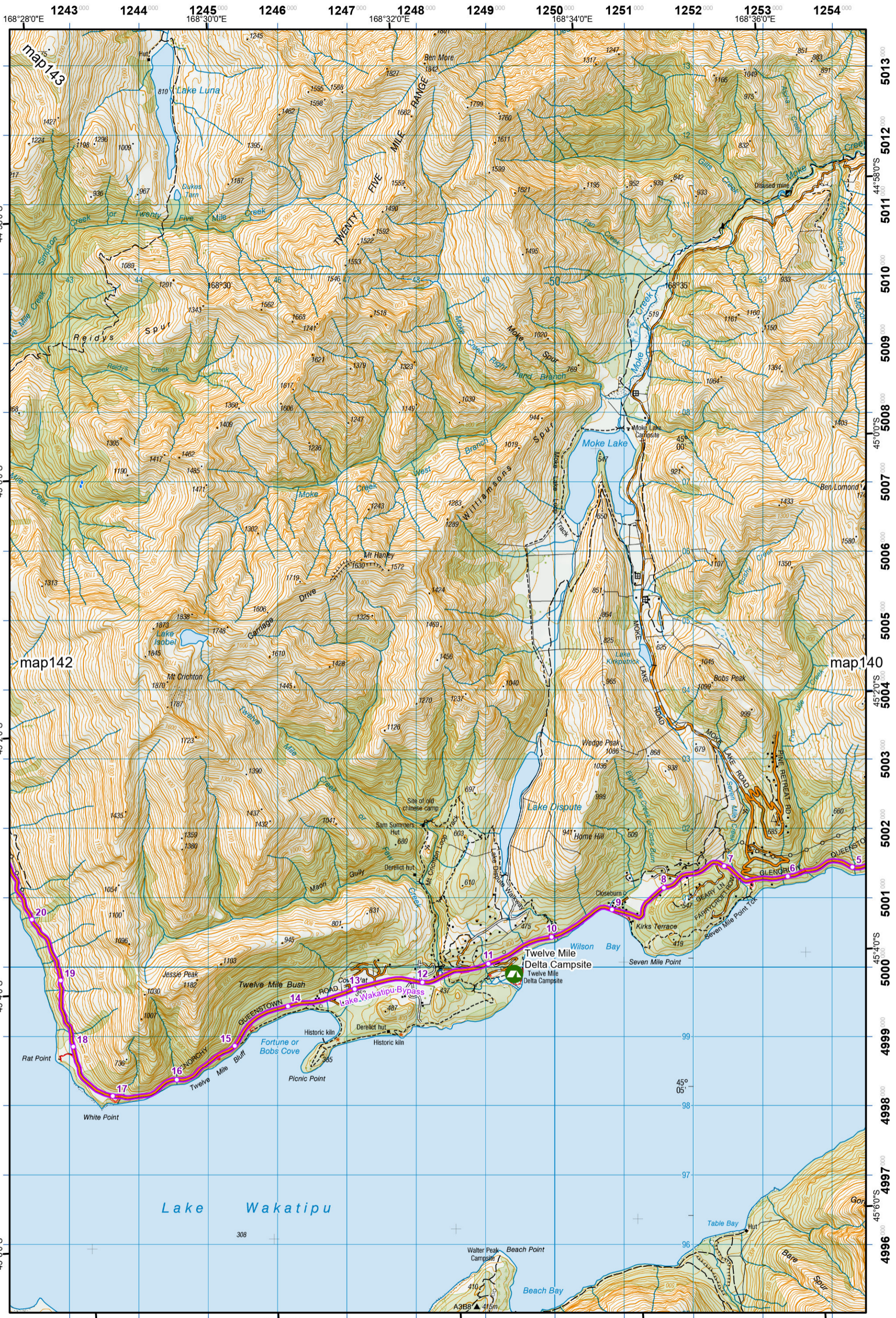


Te Araroa Trail 2024-2025 (v43)  
 Last updated: 12/8/2024  
 Data sources: DOC, LINZ, Geographx, Corax.  
 Basemap(s): LINZ Topographic 1:50,000, Geographx 100m.  
 Author(s): Herenga ā Nuku Aotearoa, Te Araroa Trust.  
 For seasonally affected or bypass sections, please check the Te Araroa Website Trail Alerts page before walking.



# Te Araroa

Wakatipu Track  
 - Lake Wakatipu Hazard Zone  
 Otago (Maps 133 - 145)



- KEY**
- DOC Huts & Campsites Using Te Araroa Pass**
  - Included
  - 20% Discount
  - Not included
  - Private Campsites
  - YHA
  - Bypass Km Marks
  - Km Markers
  - Bypass
  - Main Trail
  - Open
  - Road section
  - Seasonal
  - Water crossing
  - Drinking water



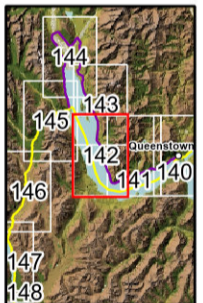
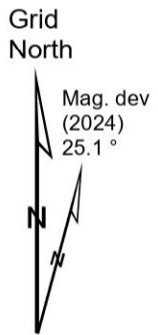
**Te Araroa Trail 2024-2025 (v43)**  
 Last updated: 12/8/2024  
 Data sources: DOC, LINZ, Geographx, Corax.  
 Basemap(s): LINZ Topographic 1:50,000, Geographx 100m.  
 Author(s): Herenga ā Nuku Aotearoa, Te Araroa Trust.  
 For seasonally affected or bypass sections, please check the Te Araroa Website Trail Alerts page before walking.



# Te Araroa

Lake Wakatipu Hazard Zone

Otago (Maps 133 - 145)



- KEY**
- DOC Huts & Campsites Using Te Araroa Pass
    - Included
    - 20% Discount
    - Not included
  - Private Campsites
    - YHA
  - Bypass Km Marks
    - Bypass Km Marks
    - Km Markers
  - Bypass
    - Bypass
  - Main Trail
    - Main Trail
    - Open
    - Road section
    - Seasonal
    - Water crossing
    - Drinking water



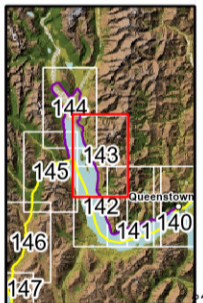
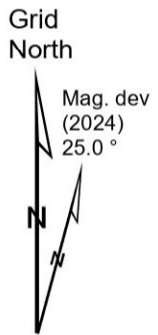
Te Araroa Trail 2024-2025 (v43)  
 Last updated: 12/8/2024  
 Data sources: DOC, LINZ, Geographx, Corax.  
 Basemap(s): LINZ Topographic 1:50,000, Geographx 100m.  
 Author(s): Herenga ā Nuku Aotearoa, Te Araroa Trust.  
 For seasonally affected or bypass sections, please check the Te Araroa Website Trail Alerts page before walking.



# Te Araroa

Lake Wakatipu Hazard Zone

Otago (Maps 133 - 145)



- KEY**
- DOC Huts & Campsites**
  - Using Te Araroa Pass
  - Included
  - 20% Discount
  - Not included
  - Private Campsites
  - YHA
  - Bypass Km Marks
  - Km Markers
  - Bypass
  - Main Trail**
  - Open
  - Road section
  - Seasonal
  - Water crossing
  - Drinking water



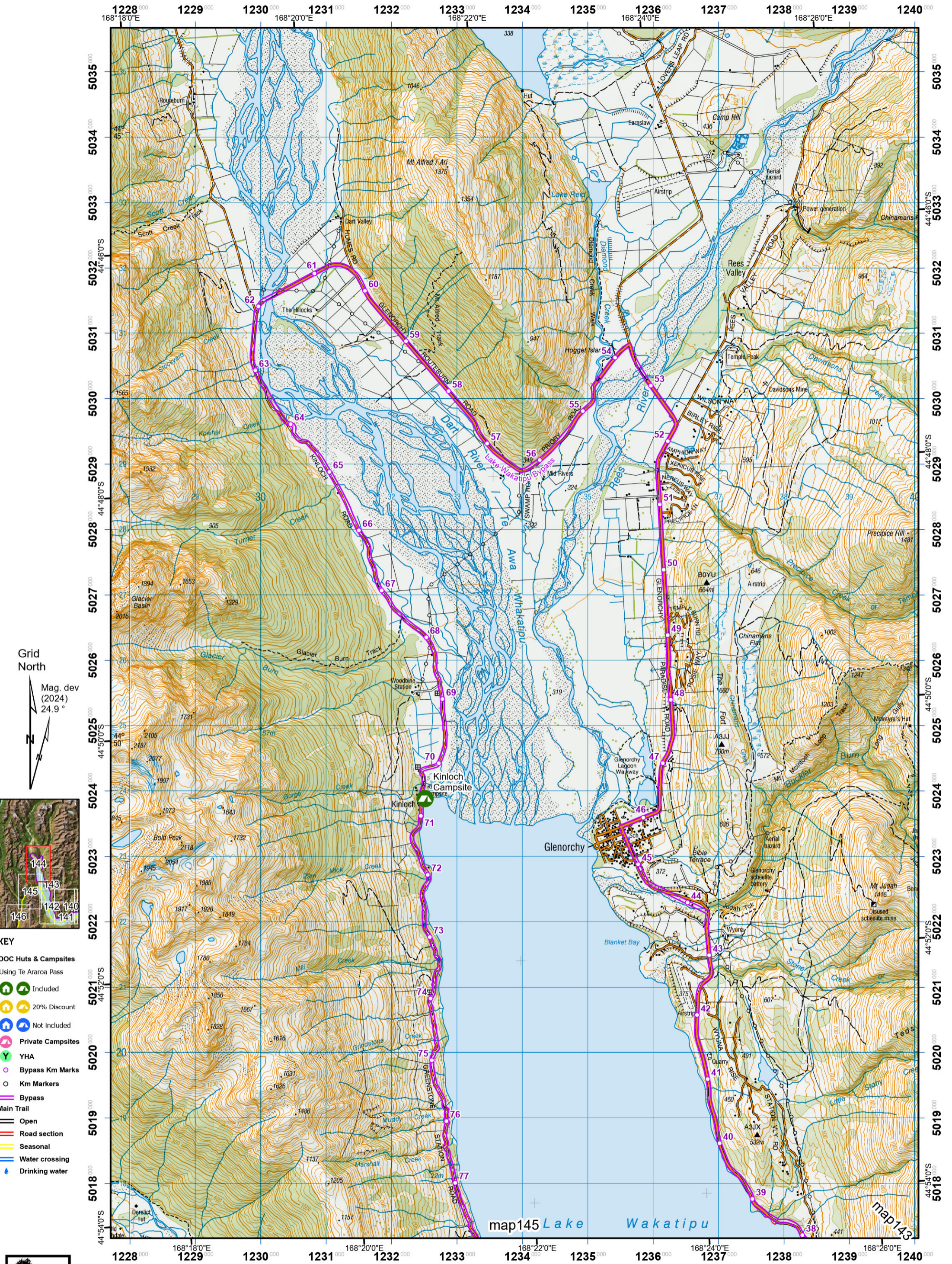
**Te Araroa Trail 2024-2025 (v43)**  
 Last updated: 12/8/2024  
 Data sources: DOC, LINZ, Geographx, Corax.  
 Basemap(s): LINZ Topographic 1:50,000, Geographx 100m.  
 Author(s): Herenga ā Nuku Aotearoa, Te Araroa Trust.  
 For seasonally affected or bypass sections, please check the Te Araroa Website Trail Alerts page before walking.

0 0.5 1 2 Km  
1:50,000 at A3

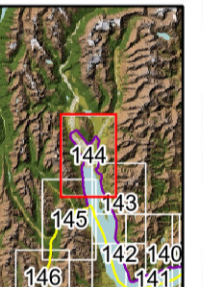
# Te Araroa

Lake Wakatipu Hazard Zone

Otago (Maps 133 - 145)



Grid North  
Mag. dev (2024)  
24.9°



- KEY**
- DOC Huts & Campsites Using Te Araroa Pass
  - Included
  - 20% Discount
  - Not included
  - Private Campsites
  - YHA
  - Bypass Km Marks
  - Km Markers
  - Bypass
  - Main Trail
  - Open
  - Road section
  - Seasonal
  - Water crossing
  - Drinking water

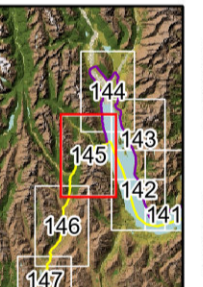
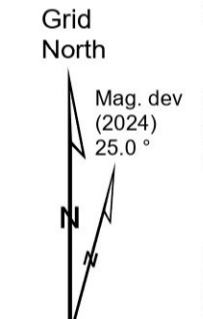
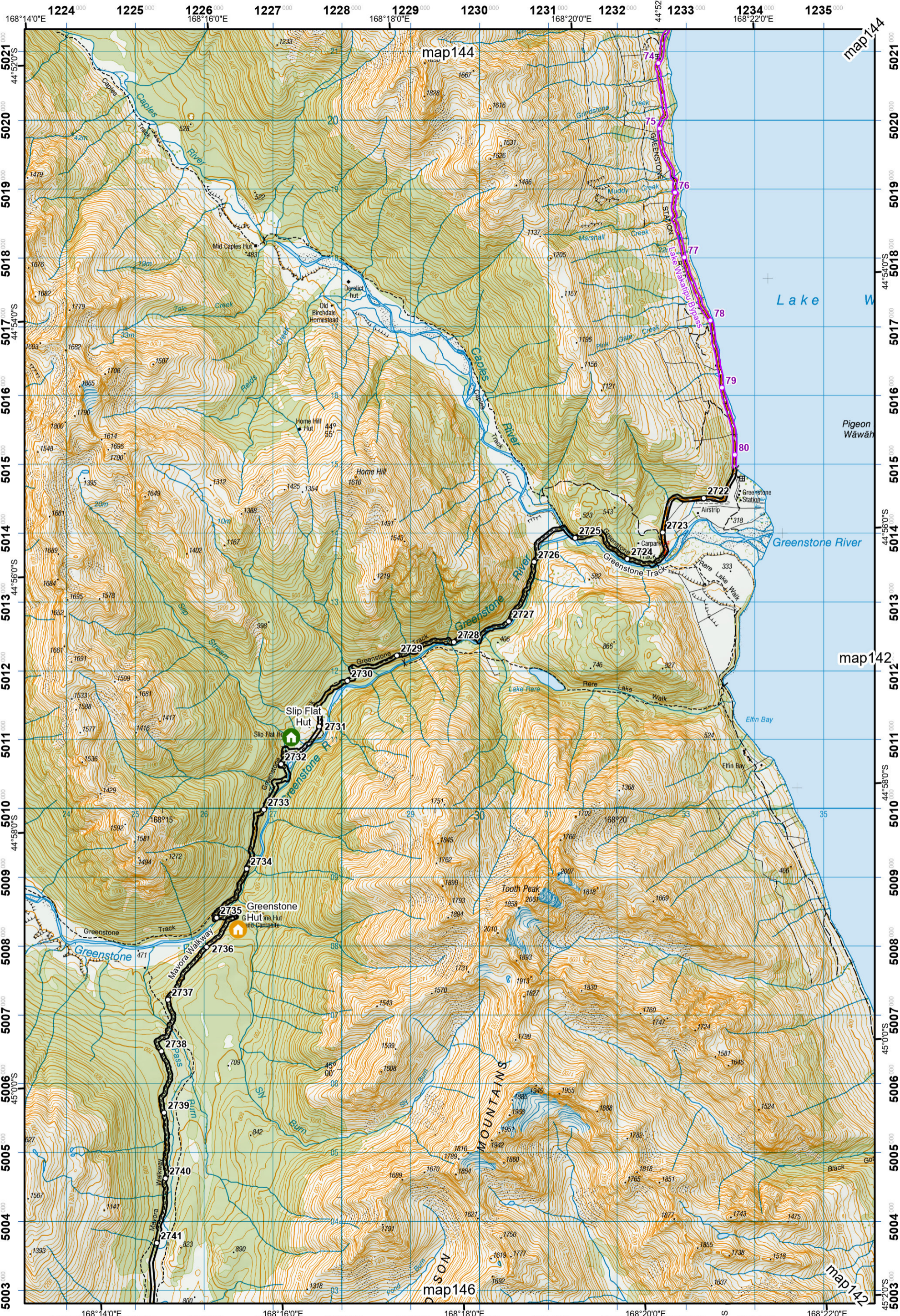


**Te Araroa Trail 2024-2025 (v43)**  
 Last updated: 12/8/2024  
 Data sources: DOC, LINZ, Geographix, Corax.  
 Basemap(s): LINZ Topographic 1:50,000, Geographix 100m.  
 Author(s): Herenga ā Nuku Aotearoa, Te Araroa Trust.  
 For seasonally affected or bypass sections, please check the Te Araroa Website Trail Alerts page before walking.

0 0.5 1 2 Km  
1:50,000 at A3

# Te Araroa

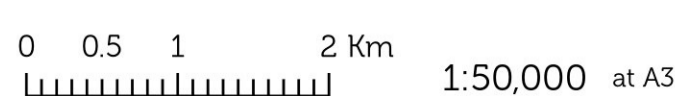
Otago (Maps 133 - 145)



- KEY**
- DOC Huts & Campsites Using Te Araroa Pass
    - Included
    - 20% Discount
    - Not included
  - Private Campsites
  - YHA
  - Bypass Km Marks
  - Km Markers
  - Bypass
  - Main Trail
  - Open
  - Road section
  - Seasonal
  - Water crossing
  - Drinking water



Te Araroa Trail 2024-2025 (v43)  
 Last updated: 12/8/2024  
 Data sources: DOC, LINZ, Geographix, Corax.  
 Basemap(s): LINZ Topographic 1:50,000, Geographix 100m.  
 Author(s): Herenga ā Nuku Aotearoa, Te Araroa Trust.  
 For seasonally affected or bypass sections, please check the Te Araroa Website Trail Alerts page before walking.



# Te Araroa

Lake Wakatipu Hazard Zone  
 - Mavora Walkway  
 Otago (Maps 133 - 145)