

WHANGANUI

68

69

80

81

82

83

LOWER HUTT

WELLINGTON

84

NELSON

91

90

89

88

87

86

85

93

92

95

94

96

97

98

99

100

101

102

103

104

105



August 2024
Version 43
Basemap: Geographx 100m

Scale: 1:900,000

Te Araroa 2024-2025

Marlborough
Maps 85 - 94

BASEMAP LEGEND: LINZ TOPO 1:50,000

ROADS AND TRACKS ¹

State highway	
Four lanes or more	
Two lanes (includes passing lanes)	
Narrow road	
Vehicle track	
Foot track	
Closed track (see warning note below) ²	
Poled route, track connector	
sealed	
Road surface metalled	
unmetalled	
Tunnel, tunnel under road	
Bridge; two lane, one lane	
Ford	
Gate, locked gate, cattlestop	
Footbridge, cableway, walkwire ³	

RAILWAYS

Double or multiple track	
Single track	
Railway station, yard or siding	
Bridge, tunnel	
Level crossing	
Road over railway	
Railway over road	
Tramway or bush railway	

MISCELLANEOUS

Residential area	
Large buildings	
Isolated building	
Homestead, stockyard	
Glasshouse or greenhouse	
Church, cemetery, grave	
Training track	
Golf course, helipad	
Historic Māori pā, redoubt, monument, plaque or signpost	
Reservoir covered, reservoir uncovered, tank	
Mast, tower, wind machine or wind turbine	
Shipwreck, lighthouse, beacon	
Fence (selection only)	
Pipeline above ground	
Pipeline underground	
Disused water race	
Power line on pylons (actual positions) ³	
Power line on poles (away from roads) ³	
Telephone line (away from roads) ³	
Industrial cableway	
Mine; underground, opencast	
Buried gas pipeline	

TO GIVE A GRID REFERENCE ON THIS MAP (To nearest 100 metres)

East		North	
1. Locate the first VERTICAL grid line to the LEFT of the point.		4. Locate the first HORIZONTAL grid line BELOW the point.	
2. Read the grid values labelling the line in either the top or bottom margin or across the middle of the map.	49	5. Read the grid values labelling the line in either the left or right margin of the map.	34
3. Estimate tenths of a grid square eastwards from the grid line to the point.	0	6. Estimate tenths of a grid square northwards from the grid line to the point.	0
	490		340

RELIEF FEATURES ⁴

Index contour	
Intermediate contours	
Perennial snow and ice contours	
Supplementary contour	
Depression contours	
Shallow depression, small depression or shaft	
Beaconed trig station (with trig identification code)	
Elevation in metres	
Cliff, terrace, slip	
Rock outcrops	
Stopbank, cutting	
Embankment or causeway	
Saddle, cave	
Alpine features	
Moraine	
Moraine wall	
Scree	

WATER FEATURES

Coastal rocks	
Shoal or reef	
Sand and mud	
Sand	
Shingle	
Swamp	
Boat ramp	
Breakwater, wharf, jetty	
Slipway	
Marine farm, seawall	
Dam, floodgate, weir	
Waterfall, rapids	
Cold spring, hot spring	
Fumarole, geothermal bore	
Watercourse, drain	
Canal; large, small	
Stream disappearing into ground	

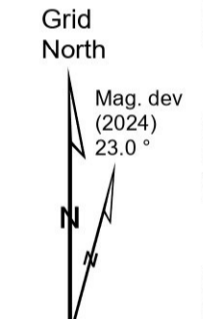
VEGETATION FEATURES

Native forest	
Exotic coniferous forest	
Exotic non-coniferous forest	
Scrub	
Scattered scrub	
Shelter belt	
Trees	
Orchard or vineyard or plantation	
Mangroves	

IMPORTANT INFORMATION:

- Representation on this map of a road or track does not necessarily indicate public right of access.
- Closed tracks or routes on this map are defined as being no longer maintained or passable and should not be used by recreationalists. The Department of Conservation or other authorities should be contacted for the latest information on tracks and huts.
- Not all aerial wires, cableways and obstructions that could be hazardous to aircraft are shown on this map.
- Contours and spot elevations in forest and snow areas may be less accurate.

1695 1696 1697 1698 1699 1700 1701 1702 1703 1704 1705 1706



- KEY**
- DOC Huts & Campsites Using Te Araroa Pass
 - Included
 - 20% Discount
 - Not included
 - Private Campsites
 - YHA
 - Bypass Km Marks
 - Km Markers
 - Bypass
 - Main Trail
 - Open
 - Road section
 - Seasonal
 - Water crossing
 - Drinking water

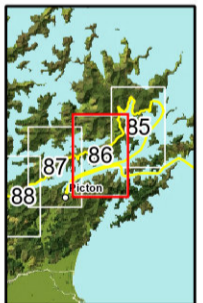
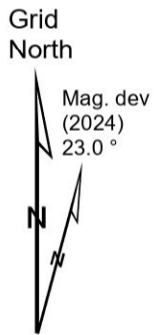
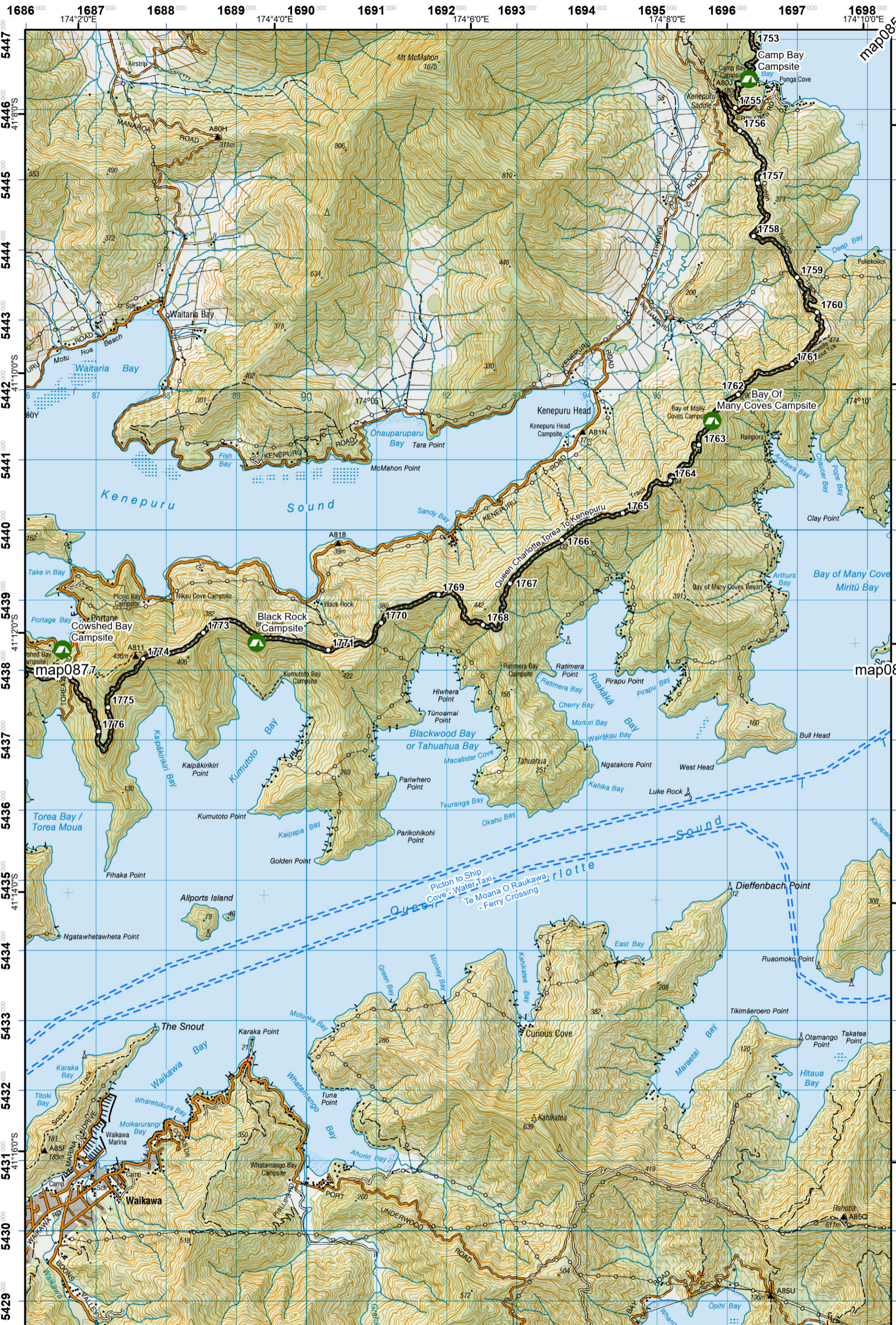


Te Araroa Trail 2024-2025 (v43)
 Last updated: 12/8/2024
 Data sources: DOC, LINZ, Geographx, Corax.
 Basemap(s): LINZ Topographic 1:50,000, Geographx 100m.
 Author(s): Herenga ā Nuku Aotearoa, Te Araroa Trust.
 For seasonally affected or bypass sections, please check the Te Araroa Website Trail Alerts page before walking.



Te Araroa

Queen Charlotte Track
 - Te Moana O Raukawa - Ferry
 Marlborough (Maps 85 - 94)



- KEY**
- DOC Huts & Campsites Using Te Araroa Pass
 - Included
 - 20% Discount
 - Not included
 - Private Campsites
 - YHA
 - Bypass Km Marks
 - Km Markers
 - Bypass
 - Main Trail
 - Open
 - Road section
 - Seasonal
 - Water crossing
 - Drinking water

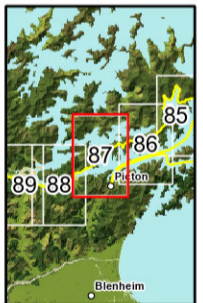
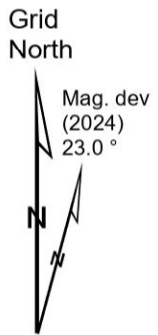
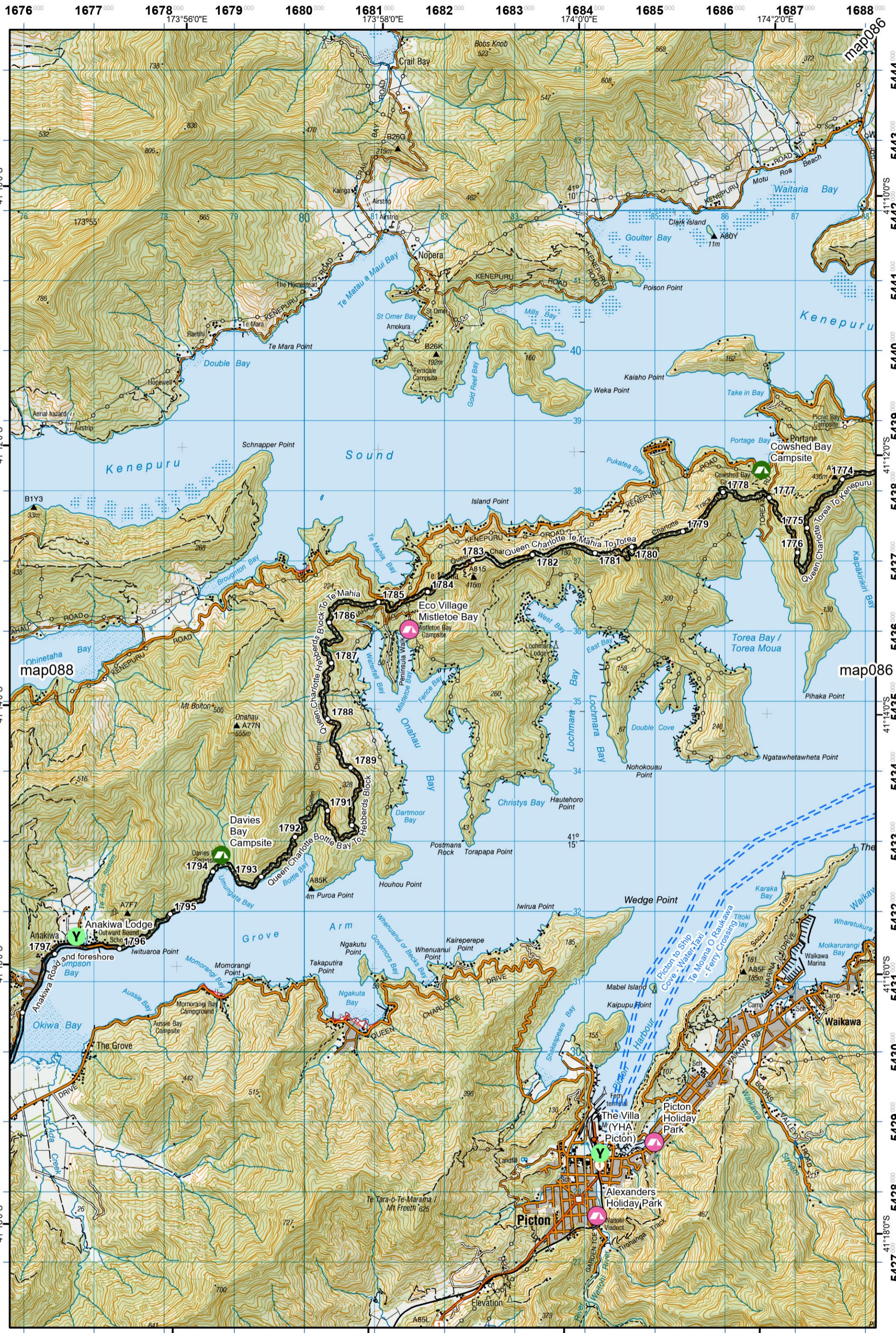


Te Araroa Trail 2024-2025 (v43)
 Last updated: 12/8/2024
 Data sources: DOC, LINZ, Geographx, Corax.
 Basemap(s): LINZ Topographic 1:50,000, Geographx 100m.
 Author(s): Herenga ā Nuku Aotearoa, Te Araroa Trust.
 For seasonally affected or bypass sections, please check the Te Araroa Website Trail Alerts page before walking.

Te Araroa

Queen Charlotte Track
 - Te Moana O Raukawa - Ferry
 Marlborough (Maps 85 - 94)





- KEY**
- DOC Huts & Campsites Using Te Araroa Pass
 - Included
 - 20% Discount
 - Not included
 - Private Campsites
 - YHA
 - Bypass Km Marks
 - Km Markers
 - Bypass
 - Main Trail
 - Open
 - Road section
 - Seasonal
 - Water crossing
 - Drinking water

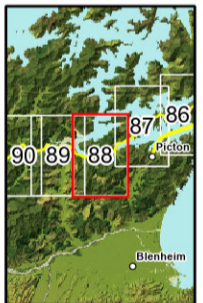
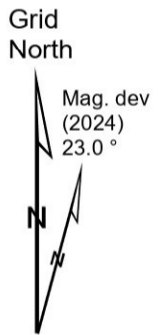
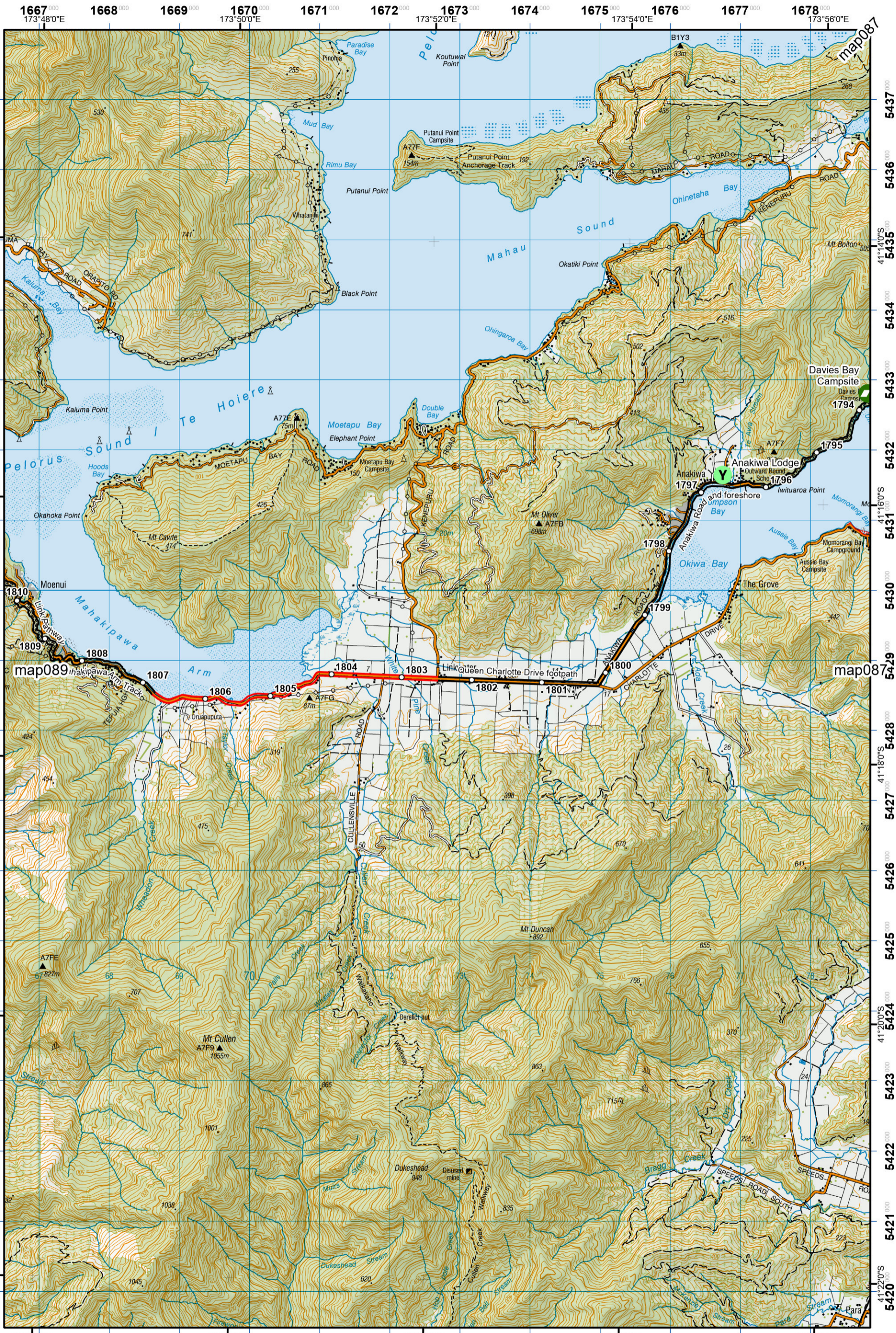
1676 1677 1678 1679 1680 1681 1682 1683 1684 1685 1686 1687 1688

Te Araroa Trail 2024-2025 (v43)
 Last updated: 12/8/2024
 Data sources: DOC, LINZ, Geographx, Corax.
 Basemap(s): LINZ Topographic 1:50,000, Geographx 100m.
 Author(s): Herenga ā Nuku Aotearoa, Te Araroa Trust.
 For seasonally affected or bypass sections, please check the Te Araroa Website Trail Alerts page before walking.

Te Araroa

Queen Charlotte Track
 - Anakiwa to Pelorus Bridge
 Marlborough (Maps 85 - 94)





- KEY**
- DOC Huts & Campsites Using Te Araroa Pass
 - Included
 - 20% Discount
 - Not included
 - Private Campsites
 - YHA
 - Bypass Km Marks
 - Km Markers
 - Bypass
 - Main Trail
 - Open
 - Road section
 - Seasonal
 - Water crossing
 - Drinking water

Te Araroa Trail 2024-2025 (v43)
 Last updated: 12/8/2024
 Data sources: DOC, LINZ, Geographx, Corax.
 Basemap(s): LINZ Topographic 1:50,000, Geographx 100m.
 Author(s): Herenga ā Nuku Aotearoa, Te Araroa Trust.
 For seasonally affected or bypass sections, please check the Te Araroa Website Trail Alerts page before walking.

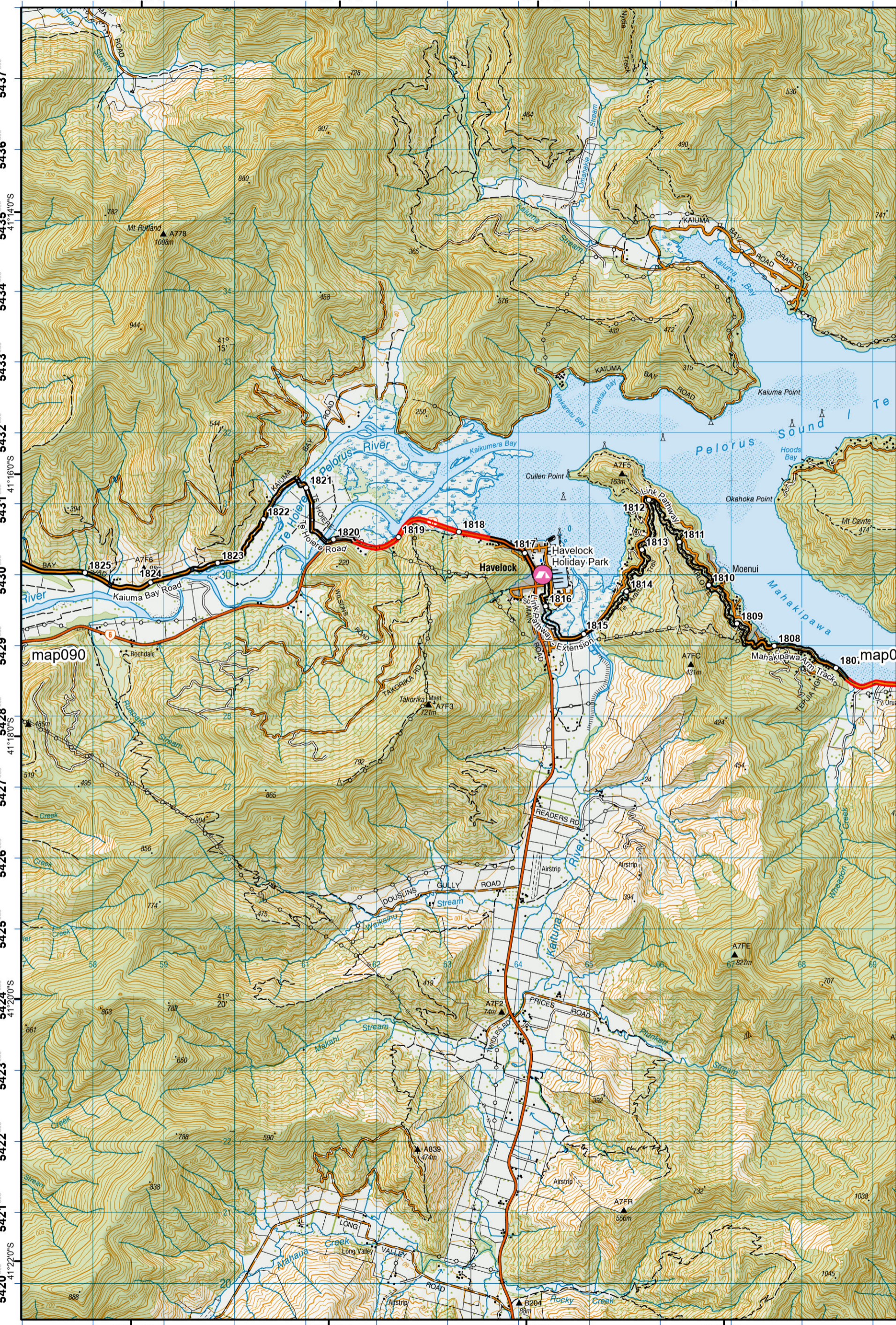
Te Araroa



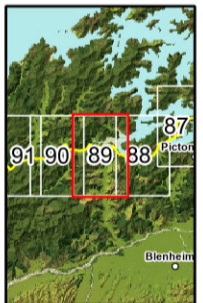
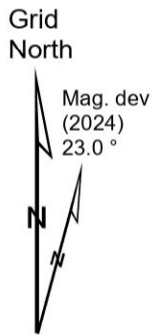
Queen Charlotte Track
 - Anakiwa to Pelorus Bridge
 Marlborough (Maps 85 - 94)



1657 1658 1659 1660 1661 1662 1663 1664 1665 1666 1667 1668 1669



1657 1658 1659 1660 1661 1662 1663 1664 1665 1666 1667 1668 1669



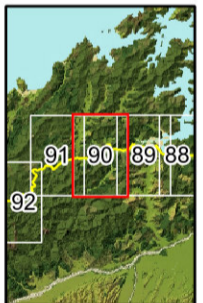
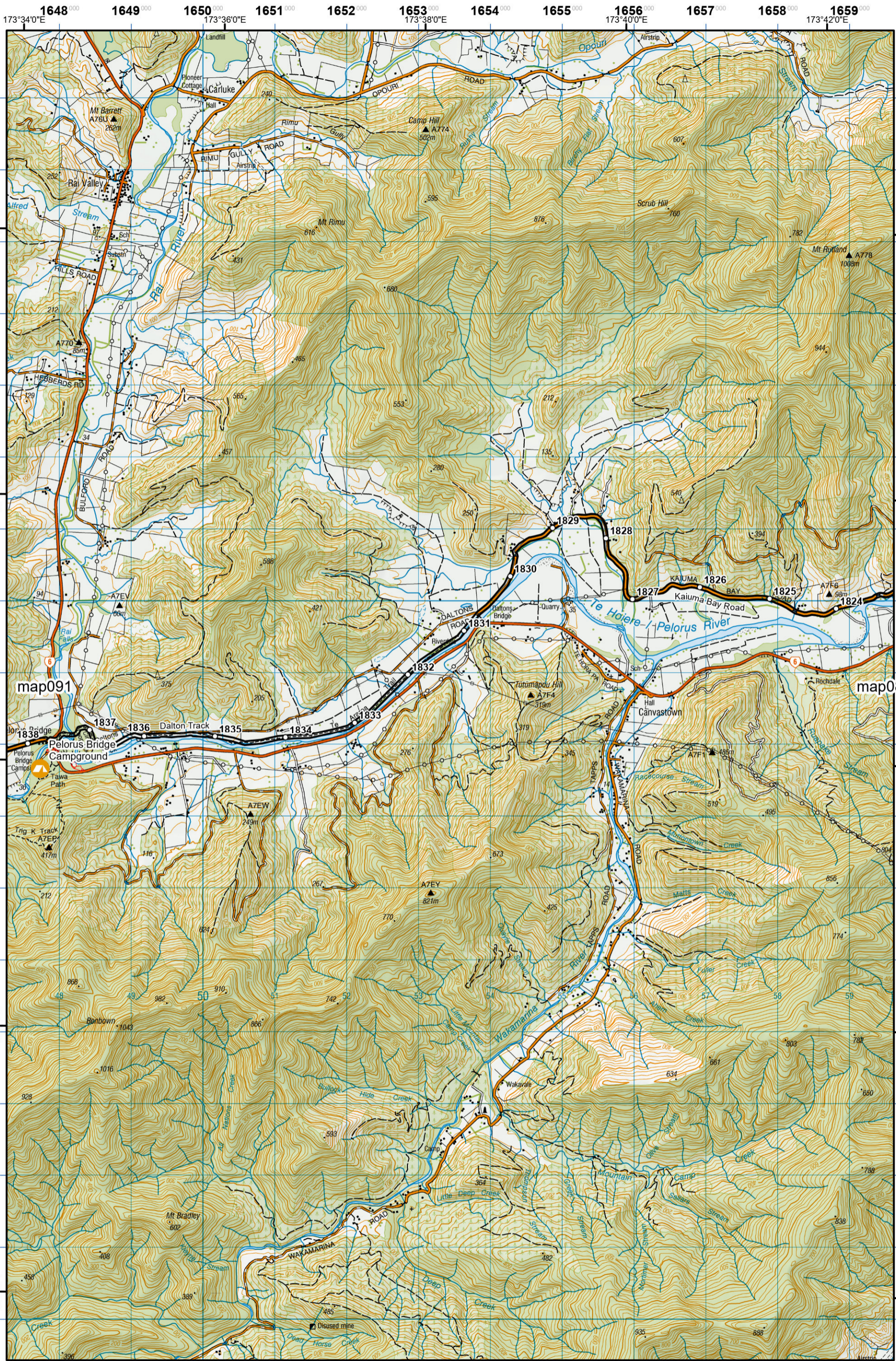
- KEY**
- DOC Huts & Campsites Using Te Araroa Pass
 - Included
 - 20% Discount
 - Not included
 - Private Campsites
 - YHA
 - Bypass Km Marks
 - Km Markers
 - Bypass
 - Main Trail
 - Open
 - Road section
 - Seasonal
 - Water crossing
 - Drinking water

Te Araroa Trail 2024-2025 (v43)
 Last updated: 12/8/2024
 Data sources: DOC, LINZ, Geographx, Corax.
 Basemap(s): LINZ Topographic 1:50,000, Geographx 100m.
 Author(s): Herenga ā Nuku Aotearoa, Te Araroa Trust.
 For seasonally affected or bypass sections, please check the Te Araroa Website Trail Alerts page before walking.



Anakiwa to Pelorus Bridge
Marlborough (Maps 85 - 94)





- KEY**
- DOC Huts & Campsites Using Te Araroa Pass
 - Included
 - 20% Discount
 - Not included
 - Private Campsites
 - YHA
 - Bypass Km Marks
 - Km Markers
 - Bypass
 - Main Trail
 - Open
 - Road section
 - Seasonal
 - Water crossing
 - Drinking water



Te Araroa Trail 2024-2025 (v43)
 Last updated: 12/8/2024
 Data sources: DOC, LINZ, Geographx, Corax.
 Basemap(s): LINZ Topographic 1:50,000, Geographx 100m.
 Author(s): Herenga ā Nuku Aotearoa, Te Araroa Trust.
 For seasonally affected or bypass sections, please check the Te Araroa Website Trail Alerts page before walking.

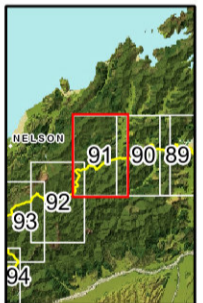
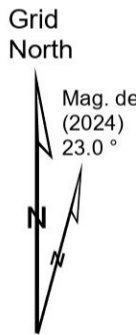
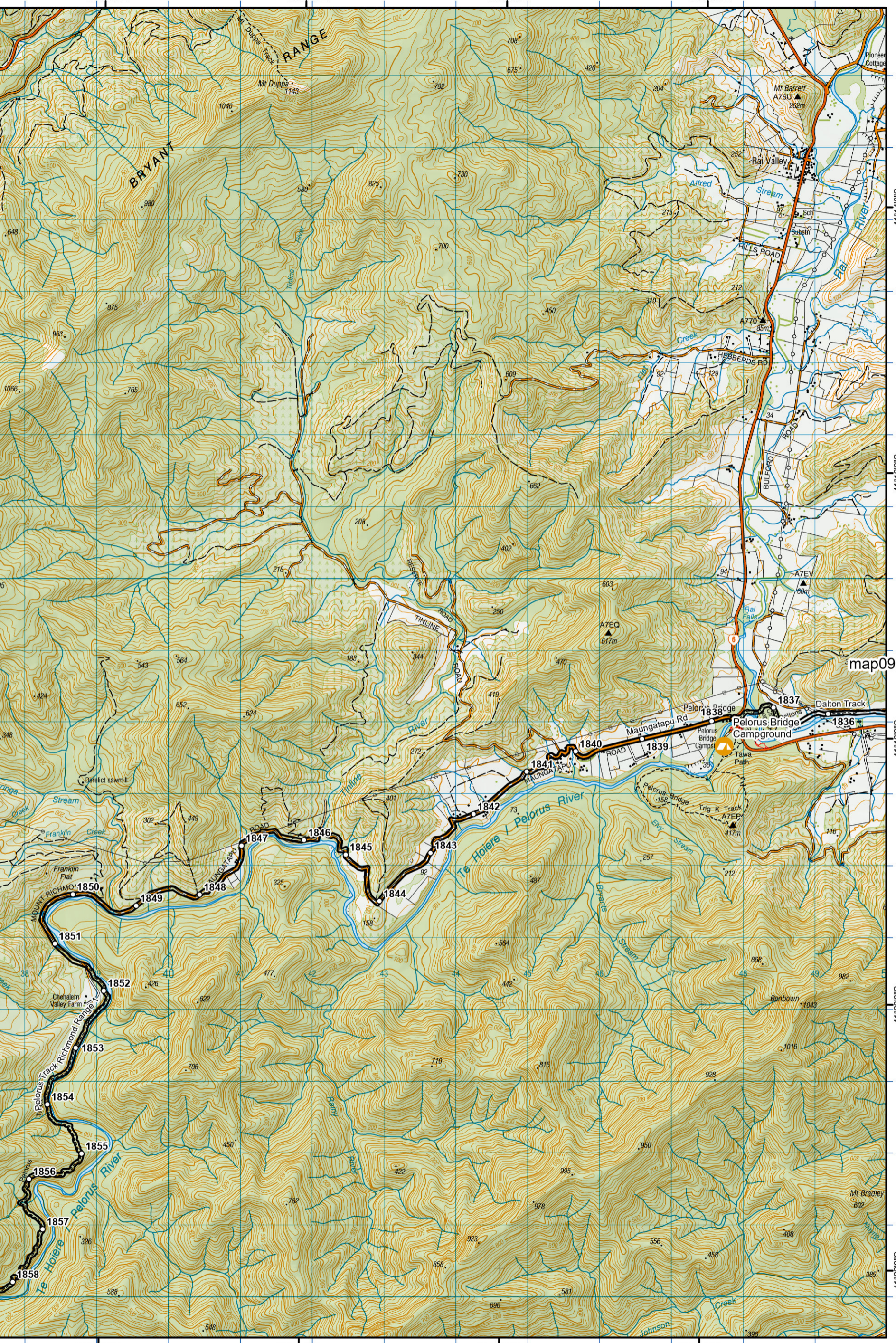
Te Araroa

Anakiwa to Pelorus Bridge
 - Pelorus River Track
 Marlborough (Maps 85 - 94)



90

1638 1639 1640 1641 1642 1643 1644 1645 1646 1647 1648 1649



- KEY**
- DOC Huts & Campsites Using Te Araroa Pass
 - Included
 - 20% Discount
 - Not included
 - Private Campsites
 - YHA
 - Bypass Km Marks
 - Km Markers
 - Bypass
 - Main Trail
 - Open
 - Road section
 - Seasonal
 - Water crossing
 - Drinking water

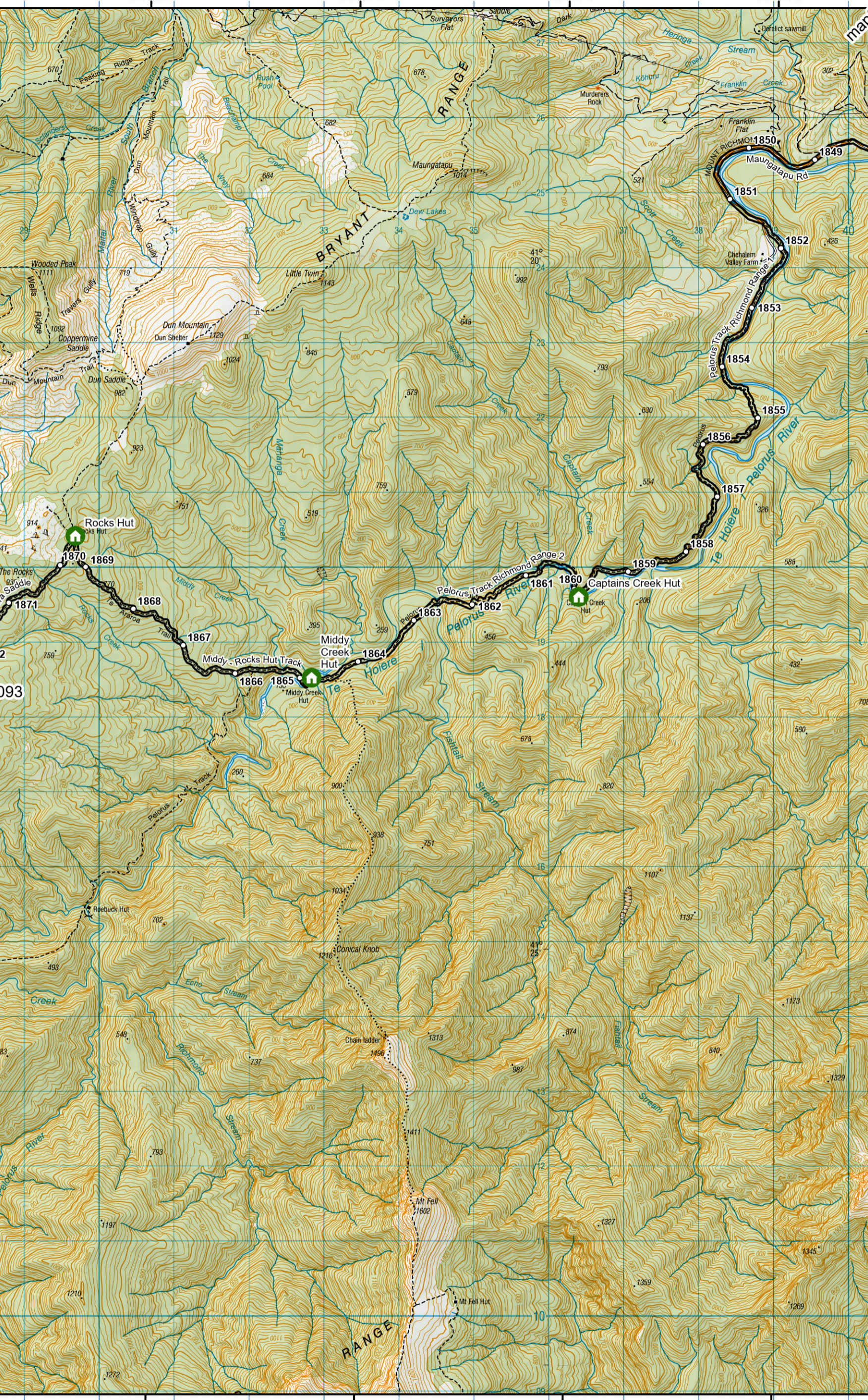
Te Araroa Trail 2024-2025 (v43)
 Last updated: 12/8/2024
 Data sources: DOC, LINZ, Geographx, Corax.
 Basemap(s): LINZ Topographic 1:50,000, Geographx 100m.
 Author(s): Herenga ā Nuku Aotearoa, Te Araroa Trust.
 For seasonally affected or bypass sections, please check the Te Araroa Website Trail Alerts page before walking.



Anakiwa to Pelorus Bridge
 - Pelorus River Track
 Marlborough (Maps 85 - 94)

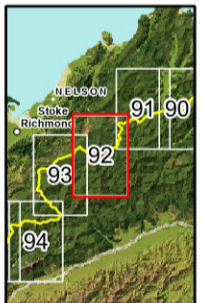
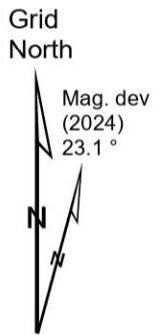


1629 000 1630 000 1631 000 1632 000 1633 000 1634 000 1635 000 1636 000 1637 000 1638 000 1639 000 1640 000



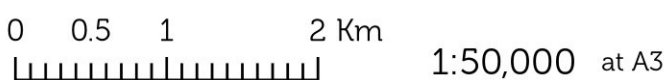
5427 000 5426 000 5425 000 5424 000 5423 000 5422 000 5421 000 5420 000 5419 000 5418 000 5417 000 5416 000 5415 000 5414 000 5413 000 5412 000 5411 000 5410 000 5409 000

1629 000 1630 000 1631 000 1632 000 1633 000 1634 000 1635 000 1636 000 1637 000 1638 000 1639 000 1640 000



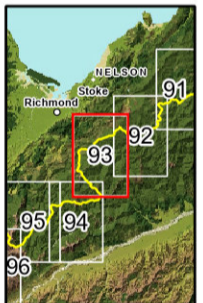
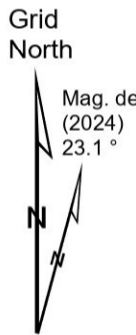
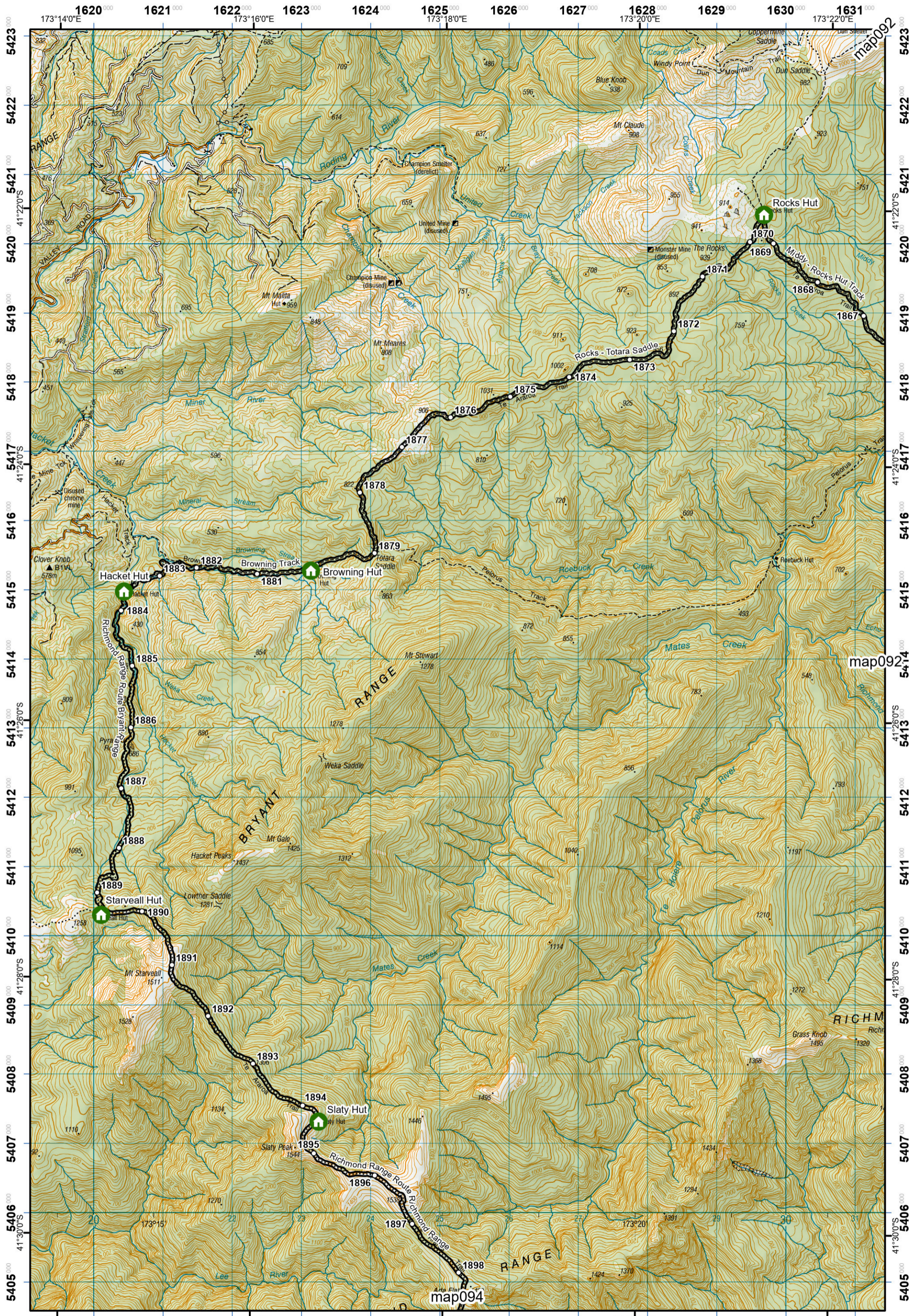
- KEY**
- DOC Huts & Campsites
 - Using Te Araroa Pass
 - Included
 - 20% Discount
 - Not included
 - Private Campsites
 - YHA
 - Bypass Km Marks
 - Km Markers
 - Bypass
 - Main Trail
 - Open
 - Road section
 - Seasonal
 - Water crossing
 - Drinking water

Te Araroa Trail 2024-2025 (v43)
 Last updated: 12/8/2024
 Data sources: DOC, LINZ, Geographx, Corax.
 Basemap(s): LINZ Topographic 1:50,000, Geographx 100m.
 Author(s): Herenga ā Nuku Aotearoa, Te Araroa Trust.
 For seasonally affected or bypass sections, please check the Te Araroa Website Trail Alerts page before walking.



Pelorus River Track
 Marlborough (Maps 85 - 94)





- KEY**
- DOC Huts & Campsites Using Te Araroa Pass
 - Included
 - 20% Discount
 - Not included
 - Private Campsites
 - YHA
 - Bypass Km Marks
 - Km Markers
 - Bypass
 - Main Trail
 - Open
 - Road section
 - Seasonal
 - Water crossing
 - Drinking water

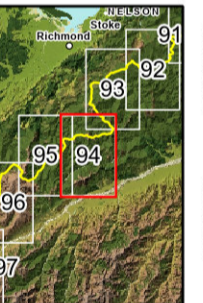
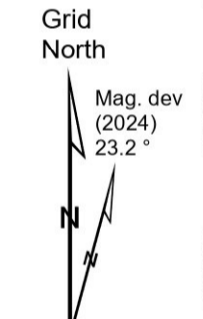
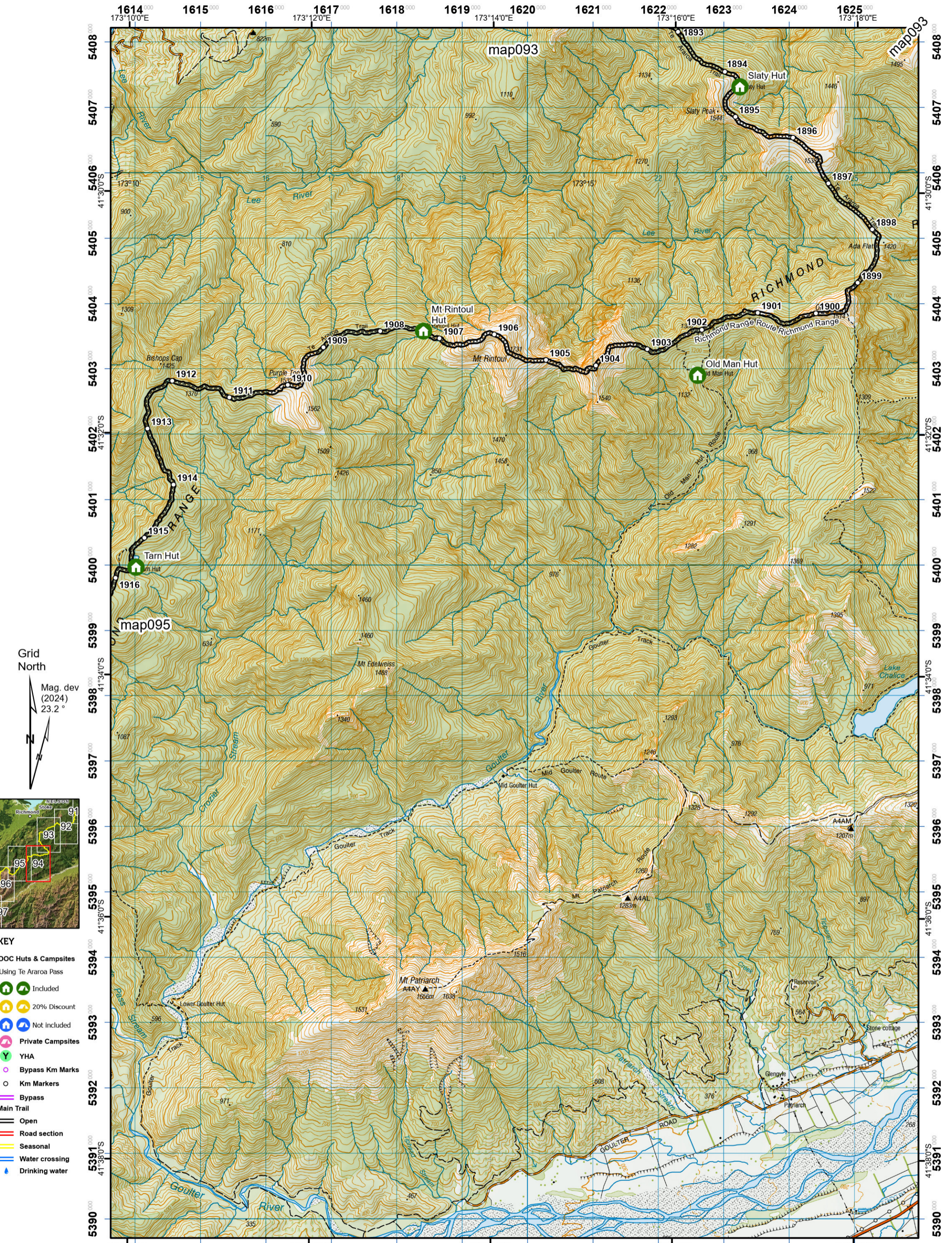


Te Araroa Trail 2024-2025 (v43)
 Last updated: 12/8/2024
 Data sources: DOC, LINZ, Geographx, Corax.
 Basemap(s): LINZ Topographic 1:50,000, Geographx 100m.
 Author(s): Herenga ā Nuku Aotearoa, Te Araroa Trust.
 For seasonally affected or bypass sections, please check the Te Araroa Website Trail Alerts page before walking.

Te Araroa



Pelorus River Track
 - Richmond Alpine Track
 Marlborough (Maps 85 - 94)



- KEY**
- DOC Huts & Campsites Using Te Araroa Pass
 - Included
 - 20% Discount
 - Not included
 - Private Campsites
 - YHA
 - Bypass Km Marks
 - Km Markers
 - Bypass
 - Main Trail
 - Open
 - Road section
 - Seasonal
 - Water crossing
 - Drinking water



Te Araroa Trail 2024-2025 (v43)
 Last updated: 12/8/2024
 Data sources: DOC, LINZ, Geographx, Corax.
 Basemap(s): LINZ Topographic 1:50,000, Geographx 100m.
 Author(s): Herenga ā Nuku Aotearoa, Te Araroa Trust.
 For seasonally affected or bypass sections, please check the Te Araroa Website Trail Alerts page before walking.



Richmond Alpine Track
 Marlborough (Maps 85 - 94)