

August 2023
Version 42
Basemap: Geographx 100m

Scale: 1:900,000

TE ARAROA 2023-2024

Auckland
Maps 26 - 33

BASEMAP LEGEND: LINZ TOPO 1:50,000

ROADS AND TRACKS ¹

State highway	
Four lanes or more	
Two lanes (includes passing lanes)	
Narrow road	
Vehicle track	
Foot track	
Closed track (see warning note below) ²	
Poled route, track connector	
sealed	
Road surface metalled	
unmetalled	
Tunnel, tunnel under road	
Bridge; two lane, one lane	
Ford	
Gate, locked gate, cattlestop	
Footbridge, cableway, walkwire ³	

RAILWAYS

Double or multiple track	
Single track	
Railway station, yard or siding	
Bridge, tunnel	
Level crossing	
Road over railway	
Railway over road	
Tramway or bush railway	

MISCELLANEOUS

Residential area	
Large buildings	
Isolated building	
Homestead, stockyard	
Glasshouse or greenhouse	
Church, cemetery, grave	
Training track	
Golf course, helipad	
Historic Māori pā, redoubt, monument, plaque or signpost	
Reservoir covered, reservoir uncovered, tank	
Mast, tower, wind machine or wind turbine	
Shipwreck, lighthouse, beacon	
Fence (selection only)	
Pipeline above ground	
Pipeline underground	
Disused water race	
Power line on pylons (actual positions) ³	
Power line on poles (away from roads) ³	
Telephone line (away from roads) ³	
Industrial cableway	
Mine; underground, opencast	
Buried gas pipeline	

TO GIVE A GRID REFERENCE ON THIS MAP (To nearest 100 metres)

East		North	
1. Locate the first VERTICAL grid line to the LEFT of the point.		4. Locate the first HORIZONTAL grid line BELOW the point.	
2. Read the grid values labelling the line in either the top or bottom margin or across the middle of the map.	49	5. Read the grid values labelling the line in either the left or right margin of the map.	34
3. Estimate tenths of a grid square eastwards from the grid line to the point.	0	6. Estimate tenths of a grid square northwards from the grid line to the point.	0
	490		340

RELIEF FEATURES ⁴

Index contour	
Intermediate contours	
Perennial snow and ice contours	
Supplementary contour	
Depression contours	
Shallow depression, small depression or shaft	
Beaconed trig station (with trig identification code)	
Elevation in metres	
Cliff, terrace, slip	
Rock outcrops	
Stopbank, cutting	
Embankment or causeway	
Saddle, cave	
Alpine features	
Moraine	
Moraine wall	
Scree	

WATER FEATURES

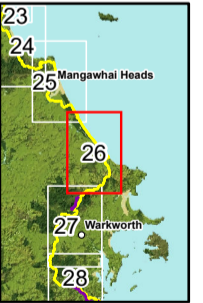
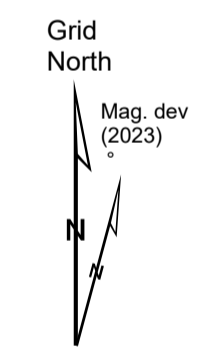
Coastal rocks	
Shoal or reef	
Sand and mud	
Sand	
Shingle	
Swamp	
Boat ramp	
Breakwater, wharf, jetty	
Slipway	
Marine farm, seawall	
Dam, floodgate, weir	
Waterfall, rapids	
Cold spring, hot spring	
Fumarole, geothermal bore	
Watercourse, drain	
Canal; large, small	
Stream disappearing into ground	

VEGETATION FEATURES

Native forest	
Exotic coniferous forest	
Exotic non-coniferous forest	
Scrub	
Scattered scrub	
Shelter belt	
Trees	
Orchard or vineyard or plantation	
Mangroves	

IMPORTANT INFORMATION:

- Representation on this map of a road or track does not necessarily indicate public right of access.
- Closed tracks or routes on this map are defined as being no longer maintained or passable and should not be used by recreationalists. The Department of Conservation or other authorities should be contacted for the latest information on tracks and huts.
- Not all aerial wires, cableways and obstructions that could be hazardous to aircraft are shown on this map.
- Contours and spot elevations in forest and snow areas may be less accurate.



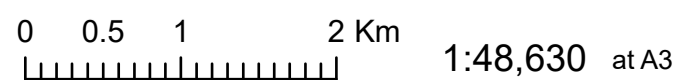
- KEY**
- Drinking water
 - DOC Huts
 - DOC Campsites
 - Private Campsites
 - YHA
 - Bypass Km Marks
 - Km Markers
 - Bypass
 - Main Trail
 - Open
 - Road section
 - Seasonal
 - Water crossing



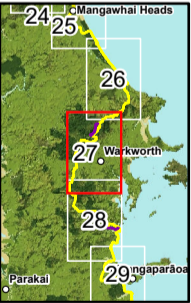
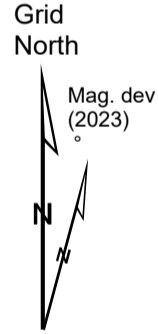
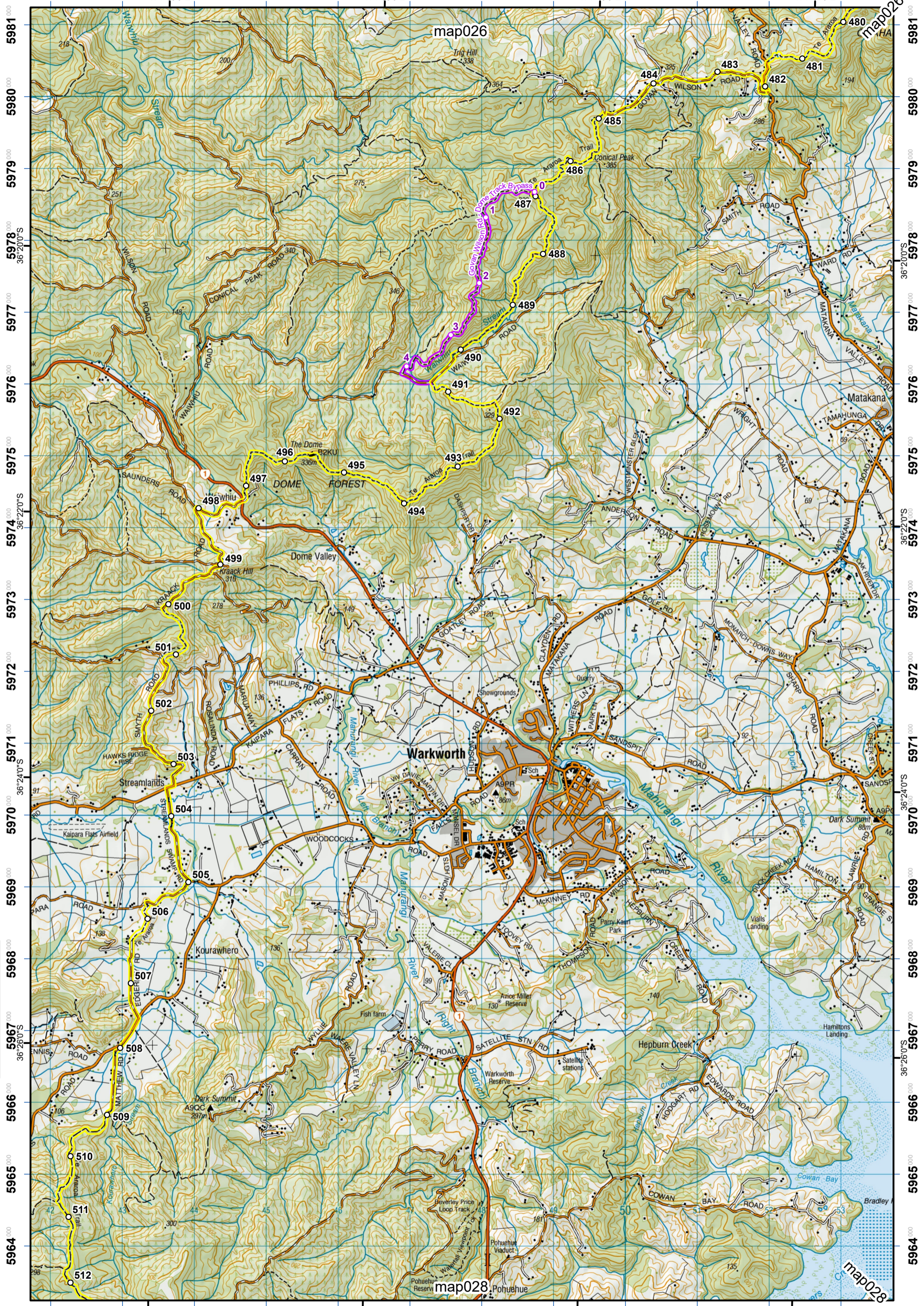
Te Araroa Trail 2023-2024 (v42) (Nov 2023 addendum map)
 Last updated: 11/22/2023
 Data sources: DOC, LINZ, Geographx, Corax.
 Basemap(s): LINZ Topographic 1:50,000, Geographx 100m.
 Author(s): Herenga ā Nuku Aotearoa, Te Araroa Trust.
 For seasonally affected or bypass sections, please check the Te Araroa Website Trail Alerts page before walking.

TE ARAROA

Mangawhai to Pakiri
 - Mt Tamahunga (Te Hikoi O Te
 Auckland (Maps 26 - 33)



1742 000 1743 000 1744 000 1745 000 1746 000 1747 000 1748 000 1749 000 1750 000 1751 000 1752 000 1753 000
174°36'0"E 174°38'0"E 174°40'0"E 174°42'0"E



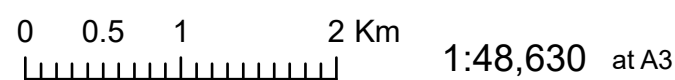
- KEY**
- Drinking water
 - DOC Huts
 - DOC Campsites
 - Private Campsites
 - YHA
 - Bypass Km Marks
 - Km Markers
 - Bypass
 - Main Trail
 - Open
 - Road section
 - Seasonal
 - Water crossing

1742 000 1743 000 1744 000 1745 000 1746 000 1747 000 1748 000 1749 000 1750 000 1751 000 1752 000 1753 000
174°36'0"E 174°38'0"E 174°40'0"E 174°42'0"E

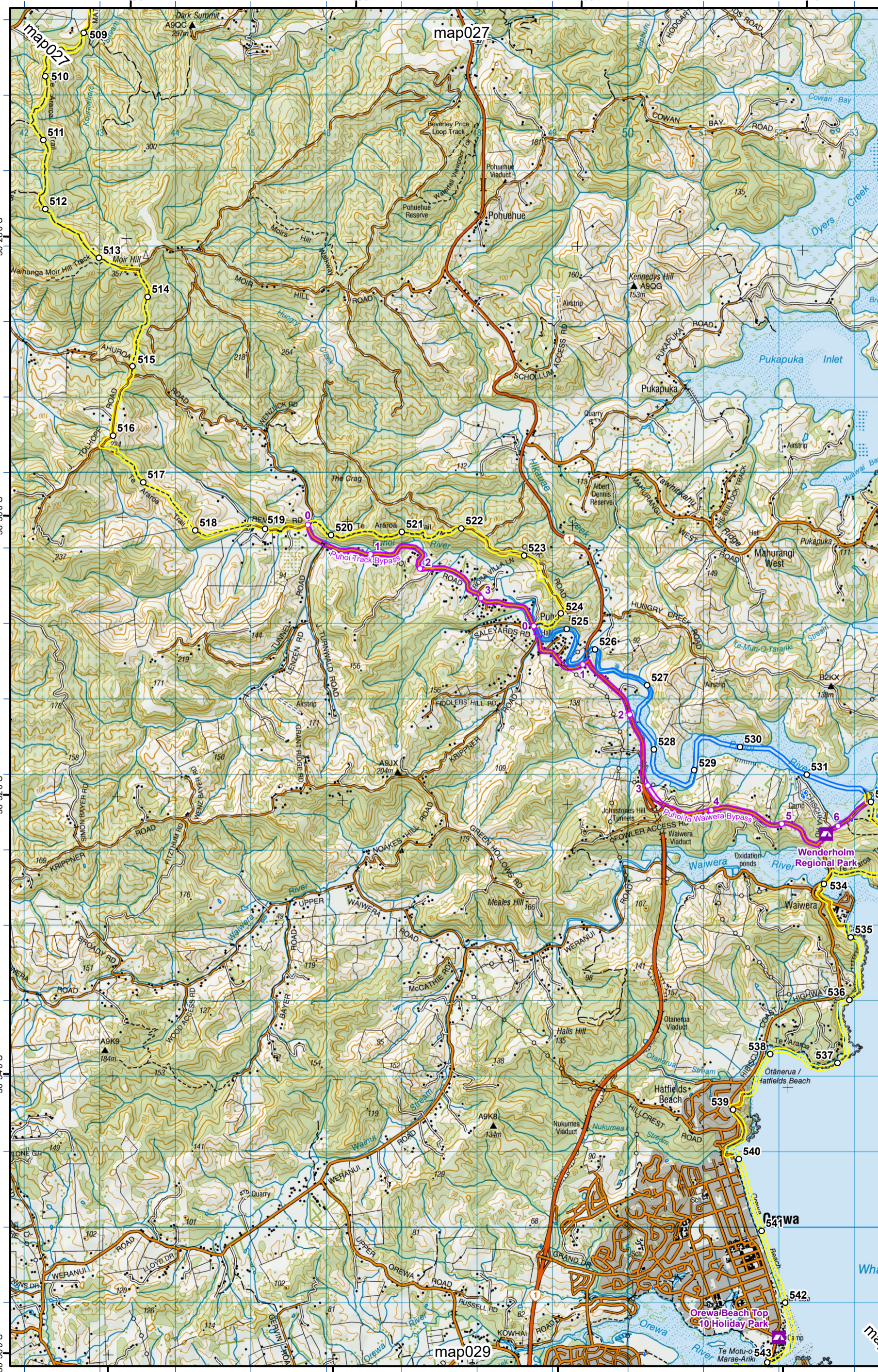
Te Araroa Trail 2023-2024 (v42)
 Last updated: 11/22/2023
 Data sources: DOC, LINZ, Geographx, Corax.
 Basemap(s): LINZ Topographic 1:50,000, Geographx 100m.
 Author(s): Herenga ā Nuku Aotearoa, Te Araroa Trust.
 For seasonally affected or bypass sections, please check the Te Araroa Website Trail Alerts page before walking.

TE ARAROA

Mt Tamahunga (Te Hikoi O Te Kiri)
- Govan Wilson to Puhoi Valley
 Auckland (Maps 26 - 33)

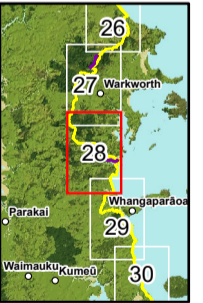
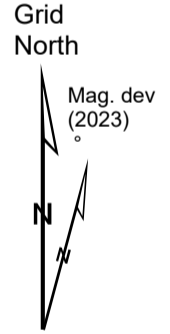


1742 1743 1744 1745 1746 1747 1748 1749 1750 1751 1752 1753



5966 5965 5964 5963 5962 5961 5960 5959 5958 5957 5956 5955 5954 5953 5952 5951 5950 5949

1742 1743 1744 1745 1746 1747 1748 1749 1750 1751 1752 1753



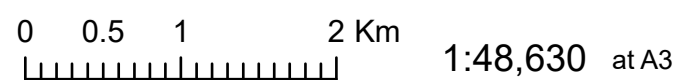
- KEY**
- Drinking water
 - DOC Huts
 - DOC Campsites
 - Private Campsites
 - YHA
 - Bypass Km Marks
 - Km Markers
 - Bypass
 - Main Trail
 - Open
 - Road section
 - Seasonal
 - Water crossing



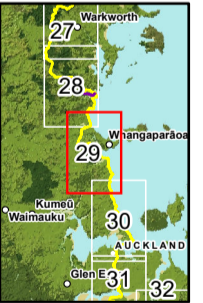
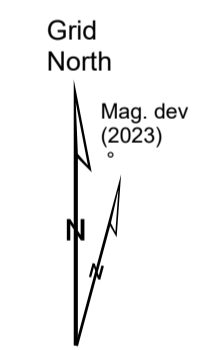
Te Araroa Trail 2023-2024 (v42) (Nov 2023 addendum map)
 Last updated: 11/22/2023
 Data sources: DOC, LINZ, Geographix, Corax.
 Basemap(s): LINZ Topographic 1:50,000, Geographix 100m.
 Author(s): Herenga ā Nuku Aotearoa, Te Araroa Trust.
 For seasonally affected or bypass sections, please check the Te Araroa Website Trail Alerts page before walking.

TE ARAROA

Govan Wilson to Puhoi Valley
 - Puhoi Track
 Auckland (Maps 26 - 33)



1747 1748 1749 1750 1751 1752 1753 1754 1755 1756 1757 1758



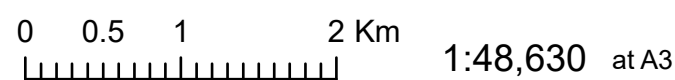
- KEY**
- Drinking water
 - DOC Huts
 - DOC Campsites
 - Private Campsites
 - YHA
 - Bypass Km Marks
 - Km Markers
 - Bypass
 - Main Trail
 - Open
 - Road section
 - Seasonal
 - Water crossing



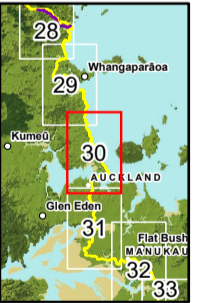
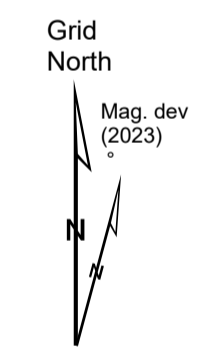
Te Araroa Trail 2023-2024 (v42)
 Last updated: 11/22/2023
 Data sources: DOC, LINZ, Geographx, Corax.
 Basemap(s): LINZ Topographic 1:50,000, Geographx 100m.
 Author(s): Herenga ā Nuku Aotearoa, Te Araroa Trust.
 For seasonally affected or bypass sections, please check the Te Araroa Website Trail Alerts page before walking.

TE ARAROA

Wenderholm to Stillwater
 - Okura to Long Bay
 Auckland (Maps 26 - 33)



1753 1754 1755 1756 1757 1758 1759 1760 1761 1762 1763 1764

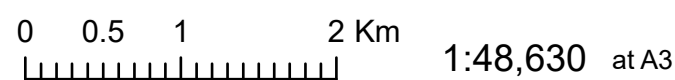


- KEY**
- Drinking water
 - DOC Huts
 - DOC Campsites
 - Private Campsites
 - YHA
 - Bypass Km Marks
 - Km Markers
 - Bypass
 - Main Trail
 - Open
 - Road section
 - Seasonal
 - Water crossing

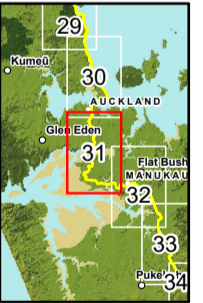
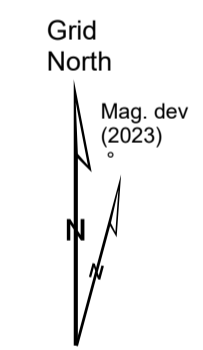


Te Araroa Trail 2023-2024 (v42)
 Last updated: 11/22/2023
 Data sources: DOC, LINZ, Geographx, Corax.
 Basemap(s): LINZ Topographic 1:50,000, Geographx 100m.
 Author(s): Herenga ā Nuku Aotearoa, Te Araroa Trust.
 For seasonally affected or bypass sections, please check the Te Araroa Website Trail Alerts page before walking.

TE ARAROA



North Shore Coastal Walk
 - Coast to Coast Walkway
 Auckland (Maps 26 - 33)

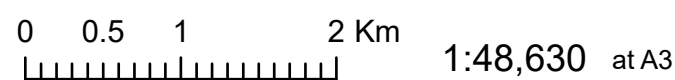


- KEY**
- Drinking water
 - DOC Huts
 - DOC Campsites
 - Private Campsites
 - YHA
 - Bypass Km Marks
 - Km Markers
 - Bypass
 - Main Trail
 - Open
 - Road section
 - Seasonal
 - Water crossing



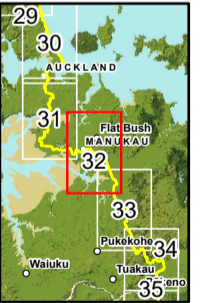
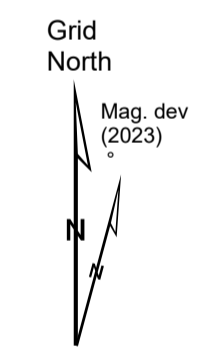
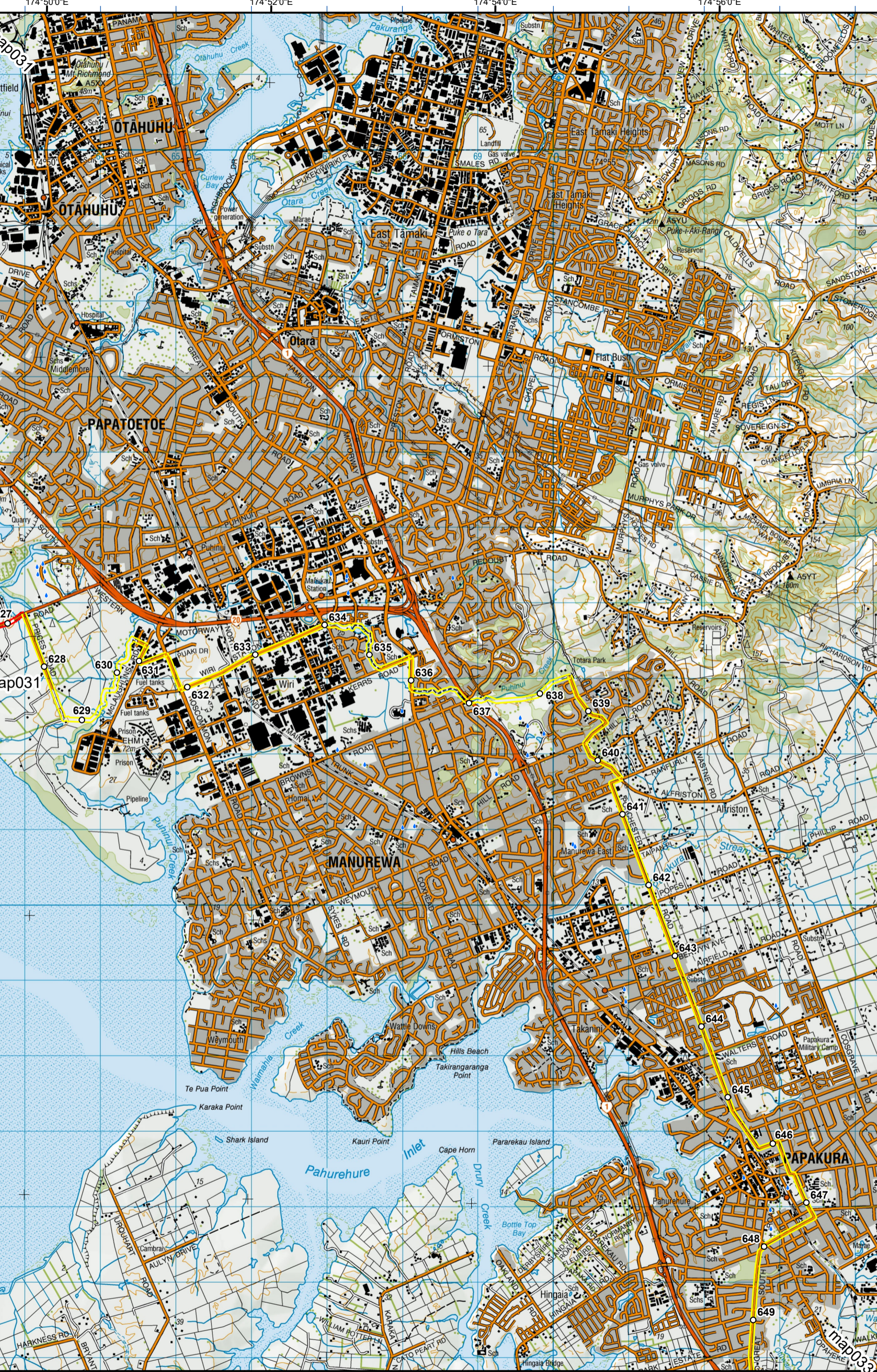
Te Araroa Trail 2023-2024 (v42)
 Last updated: 11/22/2023
 Data sources: DOC, LINZ, Geographx, Corax.
 Basemap(s): LINZ Topographic 1:50,000, Geographx 100m.
 Author(s): Herenga ā Nuku Aotearoa, Te Araroa Trust.
 For seasonally affected or bypass sections, please check the Te Araroa Website Trail Alerts page before walking.

TE ARAROA



Coast to Coast Walkway
 - Onehunga to Puhinui
 Auckland (Maps 26 - 33)

1763 1764 1765 1766 1767 1768 1769 1770 1771 1772 1773 1774



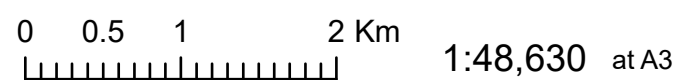
- KEY**
- Drinking water
 - DOC Huts
 - DOC Campsites
 - Private Campsites
 - YHA
 - Bypass Km Marks
 - Km Markers
 - Bypass
 - Main Trail
 - Open
 - Road section
 - Seasonal
 - Water crossing

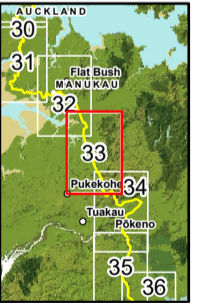
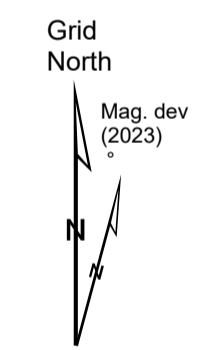
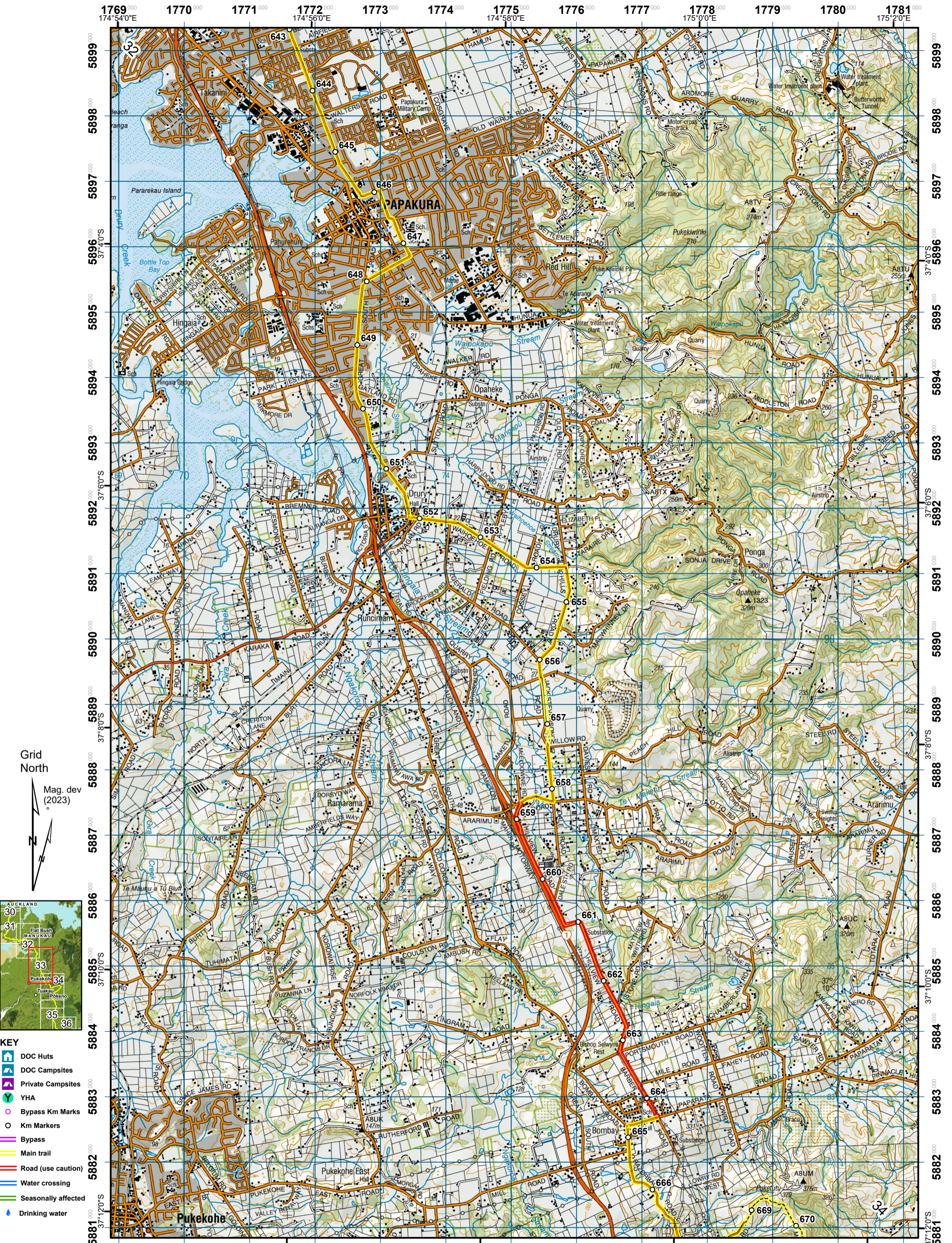


Te Araroa Trail 2023-2024 (v42)
 Last updated: 11/22/2023
 Data sources: DOC, LINZ, Geographx, Corax.
 Basemap(s): LINZ Topographic 1:50,000, Geographx 100m.
 Author(s): Herenga ā Nuku Aotearoa, Te Araroa Trust.
 For seasonally affected or bypass sections, please check the Te Araroa Website Trail Alerts page before walking.

TE ARAROA

**Onehunga to Puhinui
 - Puhinui Stream Track
 Auckland (Maps 26 - 33)**



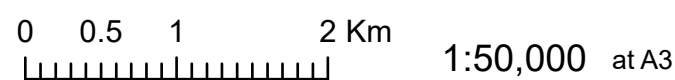


- KEY**
- DOC Huts
 - DOC Campsites
 - Private Campsites
 - YHA
 - Bypass Km Marks
 - Km Markers
 - Bypass
 - Main trail
 - Road (use caution)
 - Water crossing
 - Seasonally affected
 - Drinking water



Te Araroa Trail 2023-2024 (v42)
Last updated: 8/17/2023
Data sources: DOC, LINZ, Geographx, Corax.
Basemap(s): LINZ Topographic 1:50,000, Geographx 100m.
Author(s): Herenga ā Nuku Aotearoa, Te Araroa Trust.
For seasonally affected or bypass sections, please check the Te Araroa Website Trail Alerts page before walking.

TE ARAROA



Totara Park to Mangātawhiri

Auckland (Maps 26 - 33)